



AGENDA

OPEN SESSION

ACTION ITEMS

1. **Approval of the Minutes of November 8, 2023**
Marty Kotis, Chair

INFORMATION ITEMS

1. **Board of Governors Facility Inventory and Utilization Study**
Nathan Knuffman, Vice Chancellor for Finance and Operations

UNC-CHAPEL HILL BOARD OF TRUSTEES
STRATEGIC INITIATIVES COMMITTEE
Open Session Minutes

November 8, 2023

Chair Kotis called the meeting to order at 11:41 a.m. in the Chancellor's Ballroom at the Carolina Inn. Assistant Secretary Chris McClure called the roll. The following committee members were present:

Chair Marty Kotis
Vice Chair Rob Bryan
Brad Briner
Jennifer Halsey Evans
Perrin Jones
Ralph Meekins
John Preyer
Ramsey White

OPEN SESSION

The following item was presented for information only:

Guest Presentation

Chair Kotis welcomed and introduced Jenna A. Robinson, President of the James G. Martin Center for Academic Renewal who presented on Free Speech, Civic Education, and Academic Transparency at UNC-Chapel Hill.

Questions and discussion were entertained.

Chair Kotis shared that three resolutions related to freedom of speech, academic transparency, and civics education would be distributed to the committee in BoardEffect for review and discussion but would not be presented for a vote at the meeting. Chair Kotis stated that the resolutions would be reviewed and modified as needed for further discussion in January.

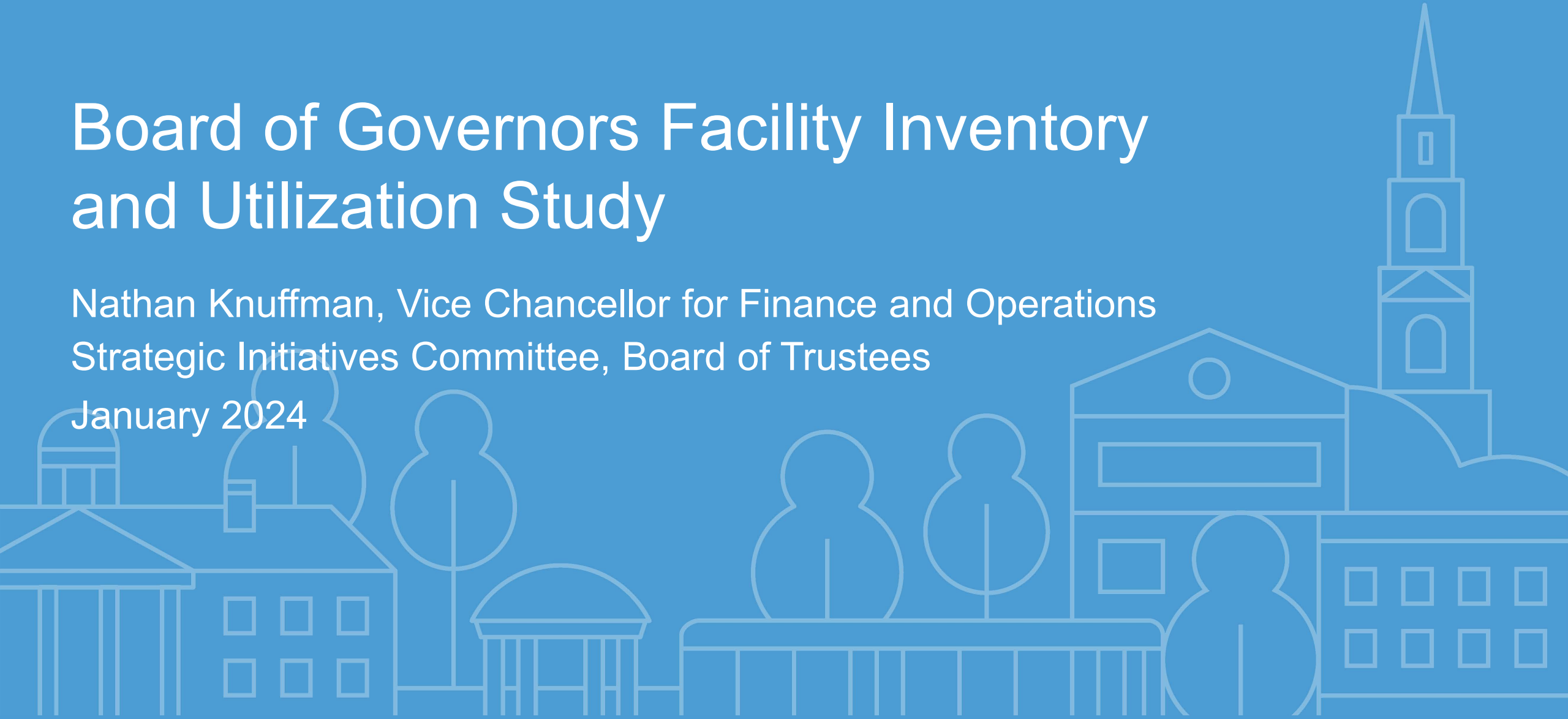
ADJOURNMENT

There being no further business to come before the committee, Chair Kotis adjourned the meeting at 12:02 p.m. without objection.

Board of Governors Facility Inventory and Utilization Study

Nathan Knuffman, Vice Chancellor for Finance and Operations
Strategic Initiatives Committee, Board of Trustees

January 2024



Agenda

- **Facilities Utilization Overview**

- Space Profile
- Building Condition
- Building Age

- **Classroom Utilization**

- System Office Utilization Metrics
- Preliminary Takeaways
- Classroom and Lab Modernization

Space Profile

UNC System Capital Assets

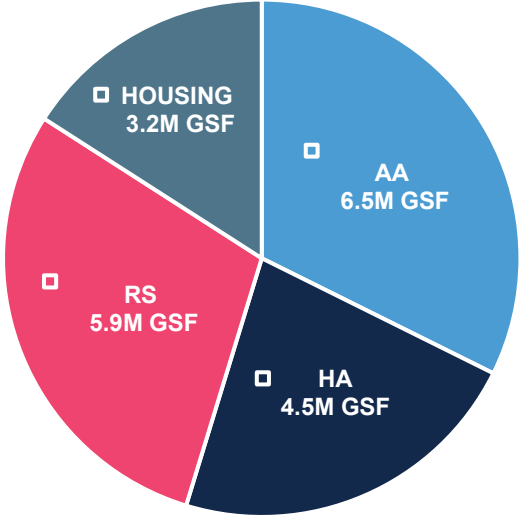
- The UNC System has approximately **92 million gross square feet** of capital assets.
- This includes close to **3,012 buildings**.*
- Current replacement value exceeds **\$27.4 billion**.

Number of Buildings by Fund Type	
1964	Appropriated
<u>1,048</u>	<u>Non-appropriated</u>
3,012	Total
Gross Square Feet (GSF) – in millions	
47.4	Appropriated
<u>44.6</u>	<u>Non-appropriated</u>
92.0	Total

* Includes all 16 university institutions, excluding UNC Hospitals

UNC-Chapel Hill Capital Assets Appropriated and Non-Appropriated

Distribution of Total Space,
20.1 GSF



Average Building Size

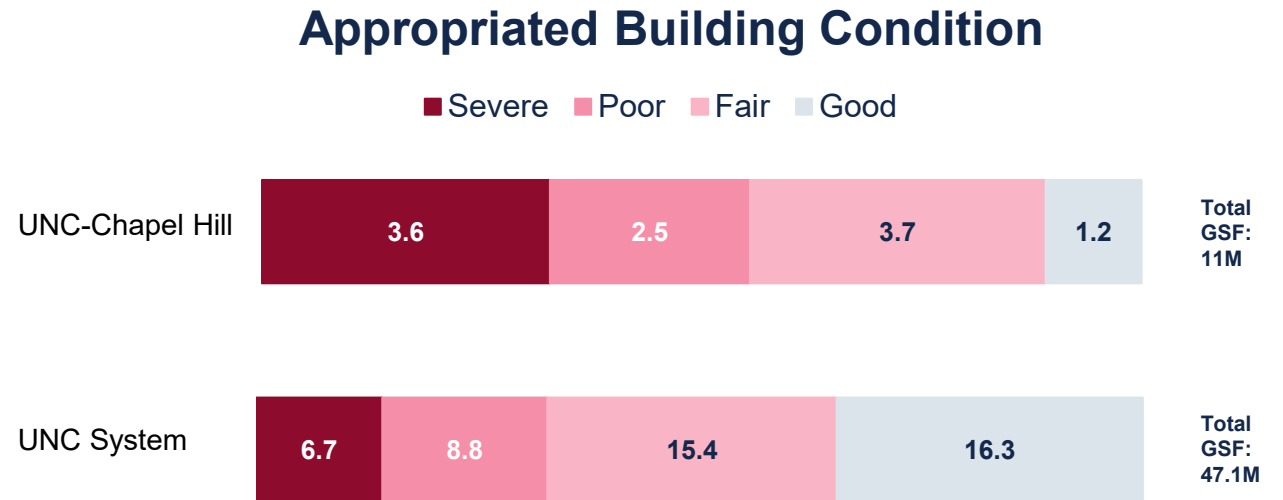


Total Buildings: 357

Source: Gordian ROPA 2022 Data

Building Condition Appropriated Space

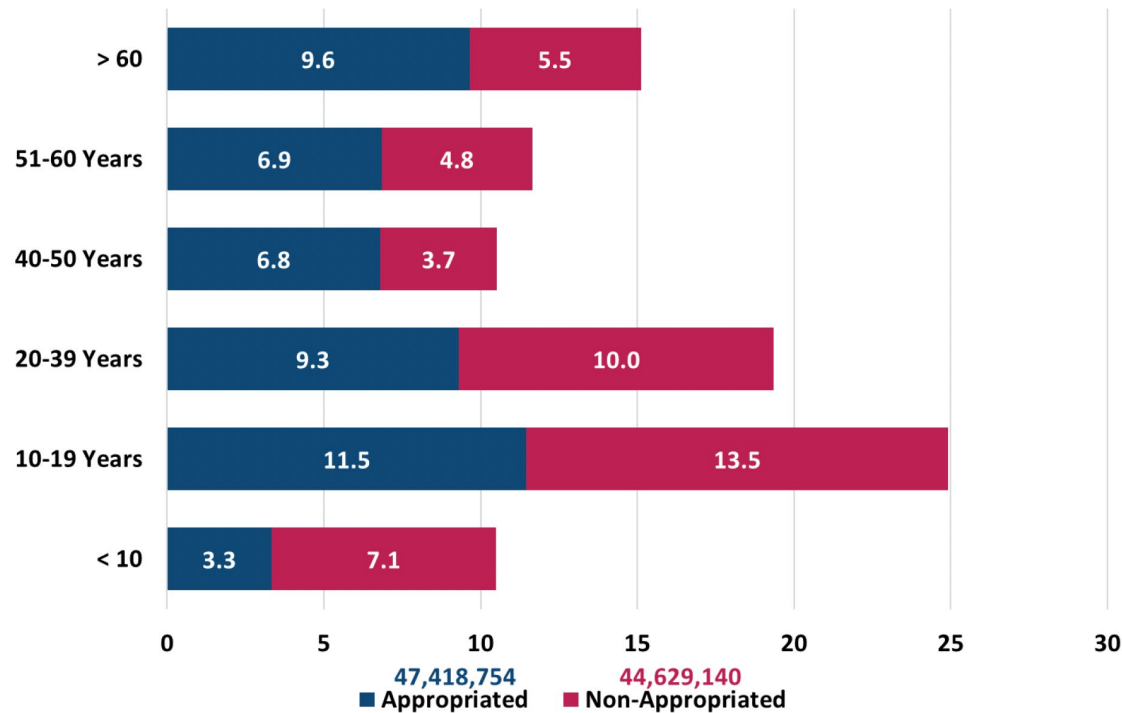
- Over 50% of UNC-Chapel Hill space is in severe or poor condition.
- Building Condition is determined by dividing deferred maintenance backlog by the current replacement value.



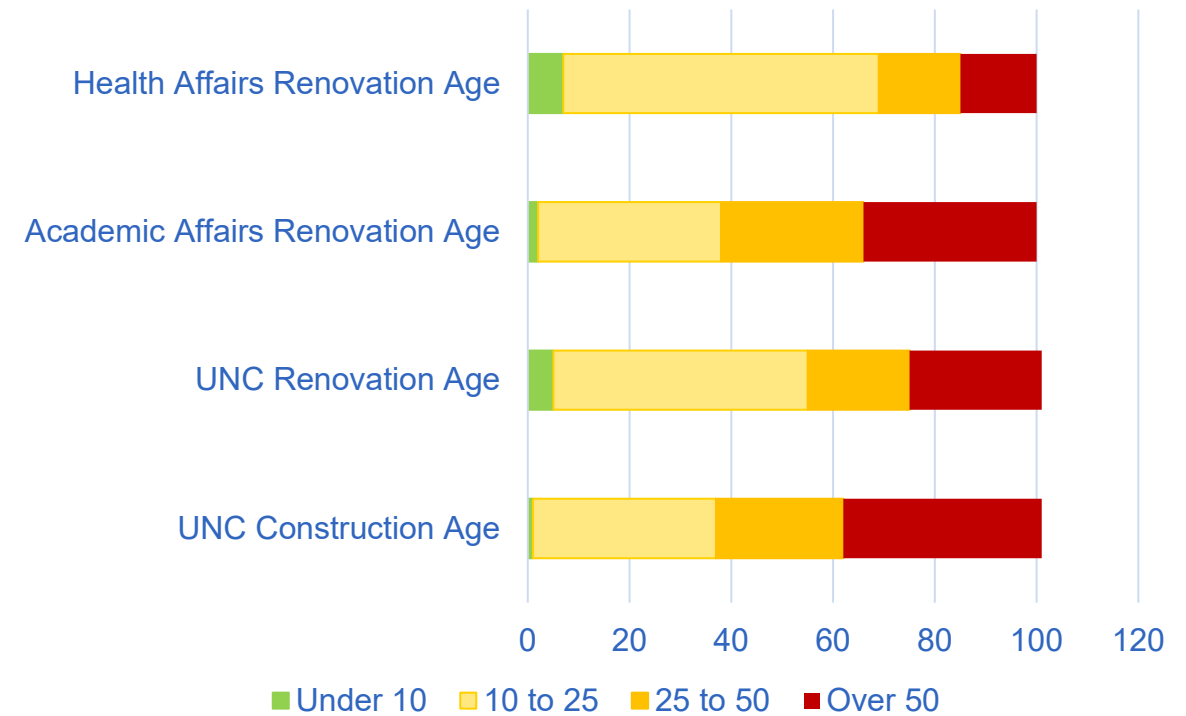
Chronic deferred maintenance continues to be the primary challenge for all campuses, particularly among appropriated facilities.

Building Age

UNC System Age of Buildings by Appropriation Type, GSF (in Millions)



UNC-Chapel Hill Building Age



Source: Gordian ROPA 2022 Data

Classroom Utilization

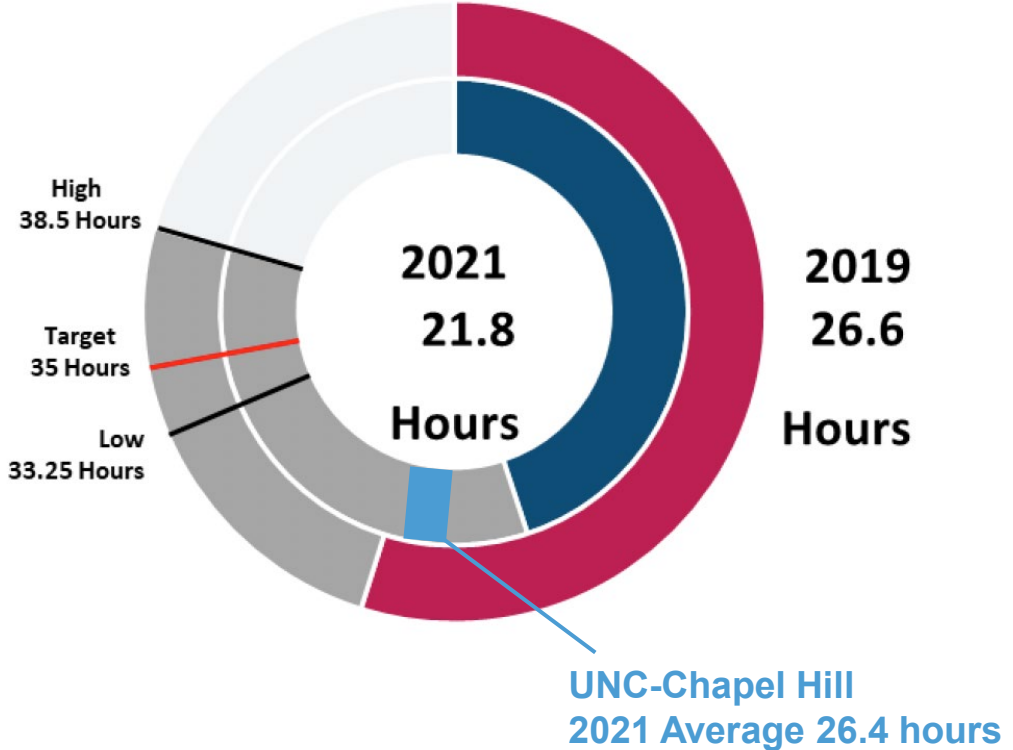
System Office Methodology

- Looks at UNC System facilities with a focus on three key areas:
 - Utilization of instructional space
 - Room space characteristics
 - Building characteristics
- Goal is to gauge the capacity and utilization of space with two primary measures:
 - Weekly room utilization
 - Seat fill

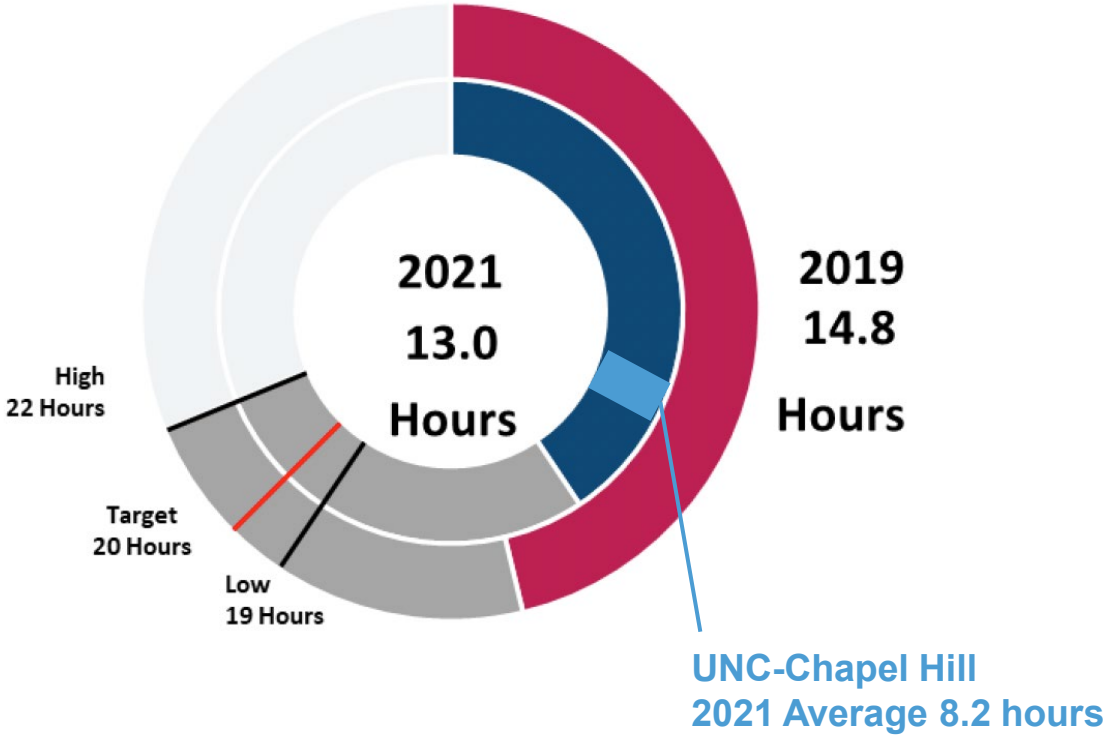
Classroom Utilization – Weekly Hours

In 2021, total average weekly hours of instruction systemwide in classrooms was 21.8 hours per week. Total average weekly hours of instructions systemwide in class labs was 13.0 hours per week.

Average Weekly Hours in Classrooms



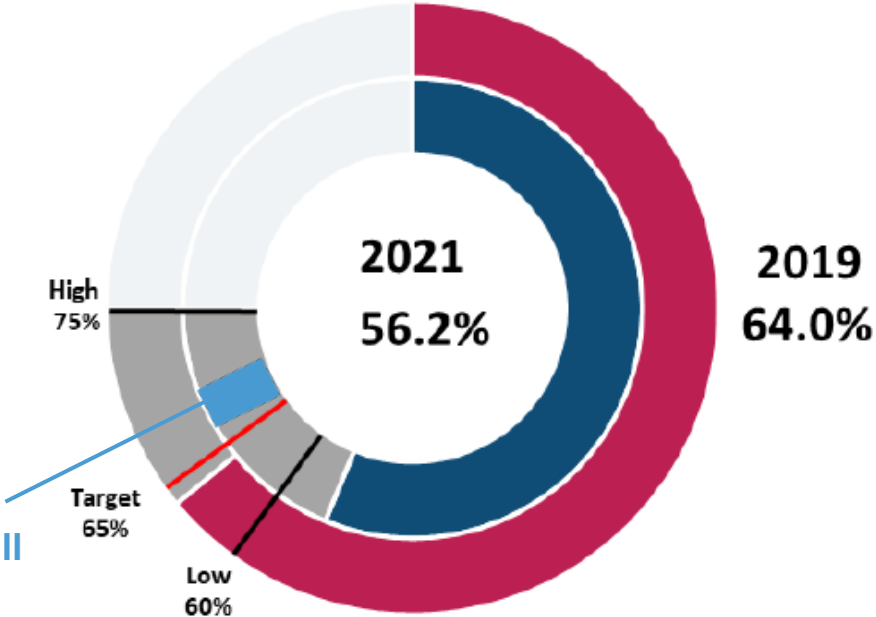
Average Weekly Hours in Class Labs



Classroom Utilization – Use of Work Stations

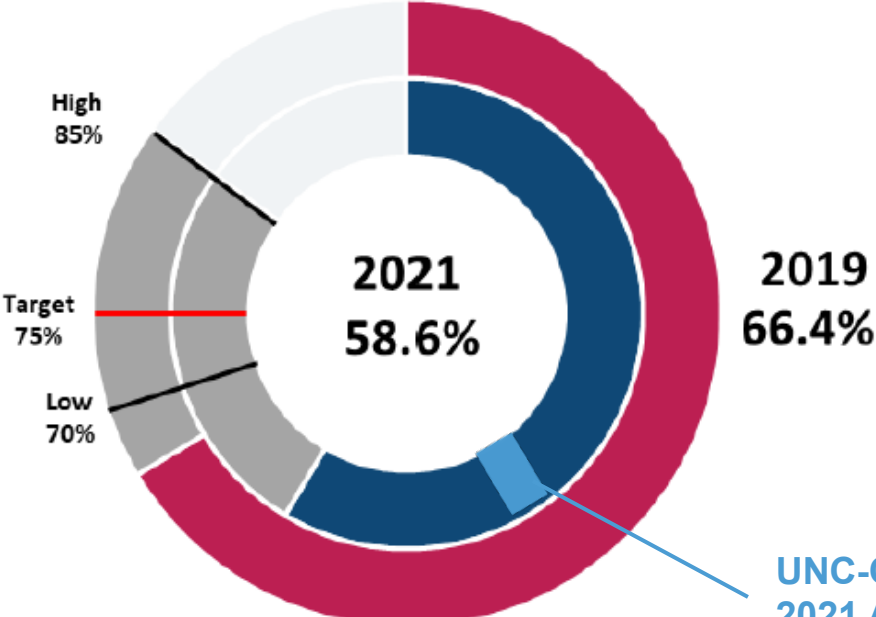
In 2021, UNC total average use of student stations for classrooms was 56.2%. In 2021, UNC total average use of student stations for class labs was 58.6%.

Station Utilization in Classrooms



UNC-Chapel Hill
 2021 Average
 68%

Station Utilization in Class Labs



UNC-Chapel Hill
 2021 Average
 44%

PRELIMINARY TAKEAWAYS

- Classroom utilization exceeds the UNC system average.
- Lab utilization appears to fall short of UNC system average and target.
 - Efforts underway to improve data collection and accuracy.
- We recognize that technology and layout flexibility of the space impact utilization.

Classroom and Lab Modernization

Phase One – 2018

- \$200K annually in GPC classroom furniture maintenance
- Carroll 111 Renovation
- Morehead Chemistry convert lab space to lab/class

Phase Two 2024-25 (Proposed)

- Comprehensive renovation Sitterson Classroom \$1.7M
- Stone Center Basement Design and Construction \$3.15M
- Convert (4) Classrooms to General Purpose
- Instructional Space Study

Classroom and Lab Utilization Improvements Underway

The University is taking a phased approach to increase classroom and lab scheduling efficiency:

- Phase 1 Spring 2024:
 - All classroom and lab space assignments entered into ConnectCarolina
 - Developed and rolled out departmental classroom and lab utilization dashboard
- Phase 2 Fall 2024: Standardizing class start times and balancing classes to non-peak hour

Additional Information from Provost/Registrar

