



THE UNIVERSITY
of NORTH CAROLINA
at CHAPEL HILL

ATTACHMENT A

CAROL L. FOLT
Chancellor

103 SOUTH BUILDING
CAMPUS BOX 9100
CHAPEL HILL, NC 27599

T 919.962.1365
F 919.962.1647
carol.folt@unc.edu

MEMORANDUM

TO: Members of the Board of Trustees
FROM: Carol L. Folt
RE: Mail Ballot
DATE: December 11, 2015

You have authorized my office to poll you by mail concerning personnel matters which require attention by the Board. Accordingly, we are transmitting to you herewith personnel actions as follows:

EPA Faculty Compensation & Tenure Actions

Attachment A

Please mark and return the enclosed mail ballot indicating whether or not you agree with the actions proposed. Thank you.

EXECUTIVE SUMMARY

Board of Trustees
December 17, 2015

No.	College/Division	Name	Dept./School	Current Rank	New Rank	Tenure Request Reason	Effective Date	Salary
Personnel Actions								
New Appointments without Tenure								
1	Health Affairs	Kandace McGuire	Surgery	Nominated Clinical Associate Professor	Associate Professor		12/18/2015	\$250,000.00
2	Health Affairs	Jill Downen	Biochemistry & Biophysics / Biology	Nominated Research Assistant Professor	Assistant Professor		1/1/2016	\$100,000.00
3	Academic Affairs	Brian Gibbs	School of Education	N/A	Assistant Professor		1/1/2016	\$72,500.00
Addition of Joint Appointment without Tenure								
1	Health Affairs	Michael Major	Pharmacology	Assistant Professor	Assistant Professor		12/18/2015	\$147,600.00
Promotion to Full Professor								
1	Health Affairs	Michael Hudgens	Biostatistics	Associate Professor	Professor		1/1/2016	\$158,680.00
2	Health Affairs	SeonAe Yeo	Nursing	Associate Professor	Professor		1/1/2016	\$94,019.00
Reappointments to the same Rank								
1	Health Affairs	Folami Ideraabdullah	Genetics / Nutrition	Assistant Professor	Assistant Professor		1/1/2017	\$123,600.00
2	Health Affairs	Nichole Korpi-Steiner	Pathology and Laboratory Medicine	Assistant Professor	Assistant Professor		1/1/2017	\$113,333.00
Designation/Reappointments to Departmental Chair								
0								
Designation/Reappointments to Distinguished Professorship								
1	Academic Affairs	Eva Labro	Kenan Flagler Business School	Associate Professor	Michael W. Haley Distinguished Scholar		12/18/2015	\$230,000.00
2	Academic Affairs	Rune Simeonsson	School of Education	Professor	The Donald & Justeen Tarbet Distinguished Term Professor of Education		1/1/2016	\$122,749.00
3	Health Affairs	Adam Zanation	Otolaryngology/HNS	Associate Professor	Professorship		1/29/2016	\$364,400.00
4	Health Affairs	Ben Philpot	Cell Biology & Physiology	Professor	Kenan Distinguished Professor		1/1/2016	\$191,454.00
Actions Conferring Tenure								
Promotion Conferring Tenure								
1	Health Affairs	Michelle Hernandez	Pediatrics	Assistant Professor	Associate Professor	Promotion based on excellence in research	3/1/2016	\$147,156.00
2	Health Affairs	Daniel Westreich	Epidemiology	Assistant Professor	Associate Professor	Promotion based on excellence in research	1/1/2016	\$104,790.00
3	Health Affairs	Jason Whitmire	Genetics / Microbiology & Immunology	Assistant Professor	Associate Professor	Promotion based on excellence in research	1/1/2016	\$106,260.00
New Appointments Conferring Tenure								
1	Health Affairs	Ruth Anderson	Nursing	Nominated Research Professor	Professor	Appointment based on sustained achievement in research, teaching and service and her outstanding record of accomplishment in research	1/1/2016	\$199,999.96
2	Health Affairs	Timothy Hoffman	Pediatrics	Nominated Professor	Professor	Appointment based on excellence in clinical scholarship	12/18/2015	\$362,433.00
3	Health Affairs	Anita Tesh	Nursing	Nominated Associate Professor	Associate Professor	Appointment based on an impressive record of sustained excellence in teaching and academic leadership	1/1/2016	\$143,000.00
Addition of Joint Appointment Conferring Tenure								
0								
Corrections								
1	Health Affairs	Amy Herring		Professor	Carol Remmer Angle Endowed Professorship in Children's Environmental Health *		12/1/2015	

EXECUTIVE SUMMARY

Board of Trustees

December ,2015

No.	College/Division	Name	School	Department	Rank	Reason	Requested Amount of Increase **	Percent of Increase **	June 30 Salary	Current Salary	New Salary	Effective Date
* Available funding for each action has been confirmed by the appropriate Department and School/Division management officials to support the proposed salary increase. Upon implementation, specific funding sources are reviewed and approved at the Department level, as well as by the applicable University Central Financial Offices, including the University Budget Office and the Office of Sponsored Research for grant-funded salaries.							** Based on cumulative increase(s) to 6/30 salary					
1	Academic Affairs	Samuel Amago	Arts and Sciences	Romance Studies	Associate Professor	Increase due to promotion from Associate Professor to Professor	\$10,080	10.90%	\$92,500	\$101,750	\$102,580	1/1/2016
2	Academic Affairs	Barbara Ambrose	Arts and Sciences	Religious Studies	Associate Professor	Increase due to promotion from Associate Professor to Professor	\$10,120	12.44%	\$81,356	\$89,491	\$91,476	1/1/2016
3	Academic Affairs	Sridhar Balasubramanian	Business School		Professor	Increase due to retention counteroffer based on offer from another top business school	\$33,600	11.39%	\$295,000	\$320,000	\$328,600	1/1/2016
4	Health Affairs	Marcella Boynton Hansen	Public Health	Health Behavior	Research Assistant Professor	Increase due to increase in job duties and responsibilities by becoming the Lead Instructor of HBEH 601	\$11,000	13.75%	\$80,000	\$87,992	\$91,000	1/1/2016
5	Academic Affairs	Kathleen Brown	Education	Dean's Office	Professor	Increase due to secondary administrative appointment as Interim Associate Dean	\$13,666	11.18%	\$122,191	\$125,857	\$135,857	1/1/2016
6	Health Affairs	Alana Campbell	Medicine	Psychiatry	Post Doc Research Associate	Increase due to new faculty appointment as Research Assistant Professor via external competitive event	\$19,568	43.07%	\$45,432	\$45,432	\$65,000	1/1/2016
7	Academic Affairs	Lora Cohen-Vogel	Education	Dean's Office	Distinguished Associate Professor	Increase due to promotion to Distinguished Professor, and to achieve equity in pay in comparable ranks within the School	\$18,329	13.72%	\$133,611	\$146,772	\$151,940	1/1/2016
8	Academic Affairs	Drew Coleman	Arts and Sciences	Geological Sciences	Associate Professor	Increase due to promotion from Associate Professor to Professor	\$10,250	10.06%	\$101,888	\$112,077	\$112,138	1/1/2016
9	Academic Affairs	Marsha Collins	Arts and Sciences	English and Comparative Literature	Professor	Increase due to being chosed for the Caroline H and Thomas S Royster Distinguished Term Professorship	\$21,200	18.15%	\$116,792	\$117,992	\$137,992	1/1/2016
10	Health Affairs	Mary Leigh Anne Daniels	Medicine	Pulmonary Medicine	Fellow	Increase due to new faculty appointment as Clinical Instructor via external competitive event	\$55,000	73.33%	\$75,000	\$75,000	\$130,000	1/1/2016
11	Health Affairs	Tania Desrosiers	Public Health	Epidemiology	Social/Clinical Research Specialist	Increase due to new faculty appointment as Research Assistant Professor via external competitive event	\$16,168	24.19%	\$66,832	\$66,832	\$83,000	1/1/2016
12	Academic Affairs	Kathleen Duval	Arts and Sciences	History	Associate Professor	Increase due to promotion from Associate Professor to Professor	\$13,000	14.73%	\$88,275	\$97,103	\$101,275	1/1/2016
13	Academic Affairs	Marcie Ferris	Arts and Sciences	American Studies	Associate Professor	Increase due to promotion from Associate Professor to Professor	\$9,100	11.44%	\$79,550	\$87,550	\$88,650	1/1/2016
14	Health Affairs	Cheryl Giscombe	Nursing		Assistant Professor	Increase due to promotion from Assistant Professor to Associate Professor	\$46,777	59.34%	\$78,832	\$115,609	\$125,609	1/1/2016
15	Academic Affairs	Desiree Griffin	Arts and Sciences	Psychology & Neuroscience	Lecturer	Increase due to being appointed to a 3-year term as an Abbey Fellow	\$9,148	15.94%	\$57,400	\$58,548	\$66,548	1/1/2016
16	Health Affairs	Nisha Gottfredson	Public Health	Health Behavior	Assistant Professor	Increase due to an increase in level of responsibilities and duties	\$19,000	25.85%	\$73,500	\$80,842	\$92,500	1/1/2016
17	Academic Affairs	Jordynn Jack	Arts and Sciences	English and Comparative Literature	Associate Professor	Increase due to promotion from Associate Professor to Professor	\$10,000	10.48%	\$95,400	\$103,940	\$105,400	1/1/2016
18	Health Affairs	Gang Li	Medicine	Radiology	Post Doc Research Associate	Increase due to new faculty appointment as Research Assistant Professor via internal competitive event	\$34,369	71.41%	\$48,131	\$48,131	\$82,500	1/1/2016
19	Health Affairs	Alexandra Lightfoot	Public Health	Health Behavior	Research Assistant Professor	Increase due to an increase in level of responsibilities and duties	\$11,460	14.59%	\$78,540	\$86,315	\$90,000	1/1/2016
20	Academic Affairs	Mike Meredith	Business School		Clinical Associate Professor	Increase due to promotion from Clinical Assistant to Clinical Associate Professor	\$14,000	20.59%	\$68,000	\$74,800	\$82,000	1/1/2016
21	Academic Affairs	Thomas Oatley	Arts and Sciences	Political Science	Associate Professor	Increase due to promotion from Associate Professor to Professor	\$11,000	12.95%	\$84,965	\$93,462	\$95,965	1/1/2016
22	Academic Affairs	Meredith Petschauer	Arts and Sciences	Exercise and Sport Science	Teaching Professor	Increase due to promotion from Senior Lecturer to Teaching Professor	\$6,149	10.73%	\$57,306	\$63,037	\$63,455	1/1/2016
23	Health Affairs	Benjamin Philpot	Medicine	Cell Biology and Physiology	Professor/Director	Increase due to retention counteroffer based on offer from Duke	\$37,030	20.24%	\$182,924	\$201,454	\$219,954	1/1/2016
24	Health Affairs	Nora Rosenberg	Public Health	Epidemiology	Post Doc Research Associate	Increase due to new faculty appointment as Research Assistant Professor via external competitive event	\$22,300	38.65%	\$57,700	\$57,700	\$80,000	1/1/2016
25	Academic Affairs	Heldi Schultz	Business School		Clinical Professor	Increase due to exceptional performance in teaching and service	\$14,500	14.72%	\$98,500	\$108,350	\$113,000	1/1/2016
26	Academic Affairs	Gideon Shemer	Arts and Sciences	Biology	Lecturer/Advisor	Increase due to being appointed to a 3-year term as an Abbey Fellow	\$13,553	20.54%	\$65,970	\$71,523	\$79,523	1/1/2016
27	Academic Affairs	Judy Tisdale	Business School		Clinical Professor	Increase due to exceptional performance in teaching and service	\$15,500	14.76%	\$105,000	\$114,750	\$120,500	1/1/2016
28	Health Affairs	Julee Waldrop	Nursing		Clinical Associate Professor	Increase due to promotion from Clinical Associate Professor to Clinical Professor	\$21,535	83.32%	\$25,847	\$43,078	\$47,382	1/1/2016
29	Academic Affairs	Brian White	Arts and Sciences	Marine Sciences	Assistant Professor	Increase due to promotion from Assistant Professor to Associate Professor	\$8,400	10.93%	\$76,868	\$84,555	\$85,268	1/1/2016
30	Academic Affairs	Jessica Wolfe	Arts and Sciences	English and Comparative Literature	Associate Professor	Increase due to promotion from Associate Professor to Professor	\$9,000	11.01%	\$81,731	\$89,904	\$90,731	1/1/2016

No.	College/Division	Name	Department/School	Rank	Reason	Total Monetary Value of Non-Salary Compensation	Duration of Non-Salary Compensation	Effective Date	End Date
Non-Salary Compensation Actions									
0	N/A	N/A	N/A	N/A	N/A	N/A	N/A	N/A	NA

EXECUTIVE SUMMARY

Board of Trustees

July 14, 2014

No.	College/Division Name	Department/School	Rank	Description
For Information				
0	N/A	N/A	N/A	N/A



THE UNIVERSITY
of NORTH CAROLINA
at CHAPEL HILL

CAROL L. FOLT
Chancellor

103 SOUTH BUILDING
CAMPUS BOX 9100
CHAPEL HILL, NC 27599

T 919.962.1365
F 919.962.1647
carol.folt@unc.edu

Mail Ballot

Board of Trustees

December 11, 2015

Chancellor Carol Folt submits for your review and approval the EPA Faculty personnel salary and compensation actions as recommended for December 2015. This mail ballot will be approved as part of the consent agenda at the Full Board meeting on Thursday, January 28, 2016.

The undersigned votes as follows with recommendation to these proposed actions as presented by the Chancellor.

	Approve	Disapprove
EPA Faculty Salary Increases and Tenure Promotions (Attachment A)	<input type="checkbox"/>	<input type="checkbox"/>

Signature_____

Printed Name_____

Date_____

Please fax to TJ Scott at (919) 962-1647 or email at tj_scott@unc.edu

The following mail ballot was approved by majority vote on December 15, 2015 by the following: Chuck Duckett, Julia Grumbles, Kelly Hopkins, Bill Keyes, Allie Ray McCullen, Ed McMahan, Hari Nath, and Houston Summers



THE UNIVERSITY
of NORTH CAROLINA
at CHAPEL HILL

ATTACHMENT B

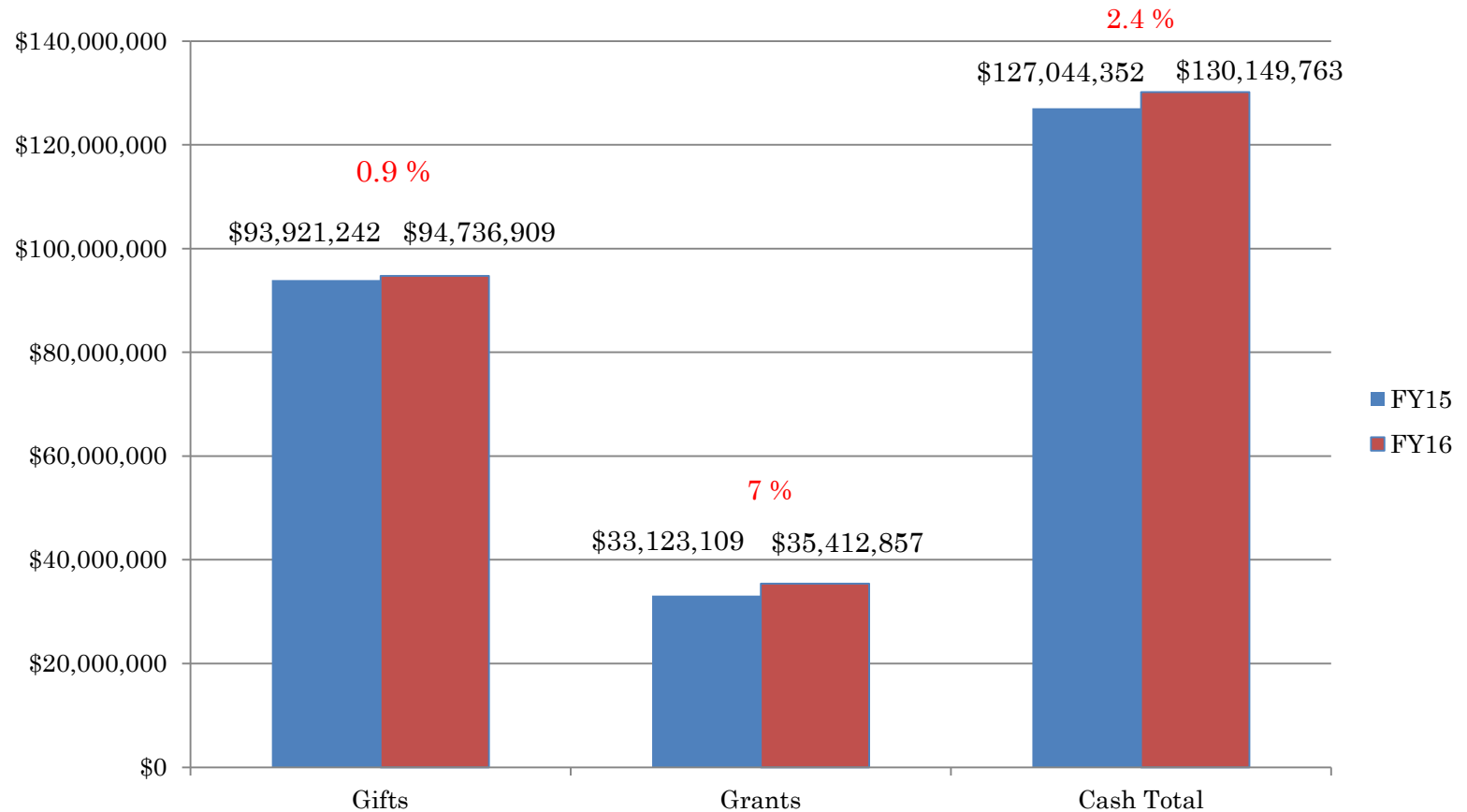
Development Update

January 27, 2016

Meeting of the UNC-CH Board of
Trustees

David S. Routh
Vice Chancellor for Development

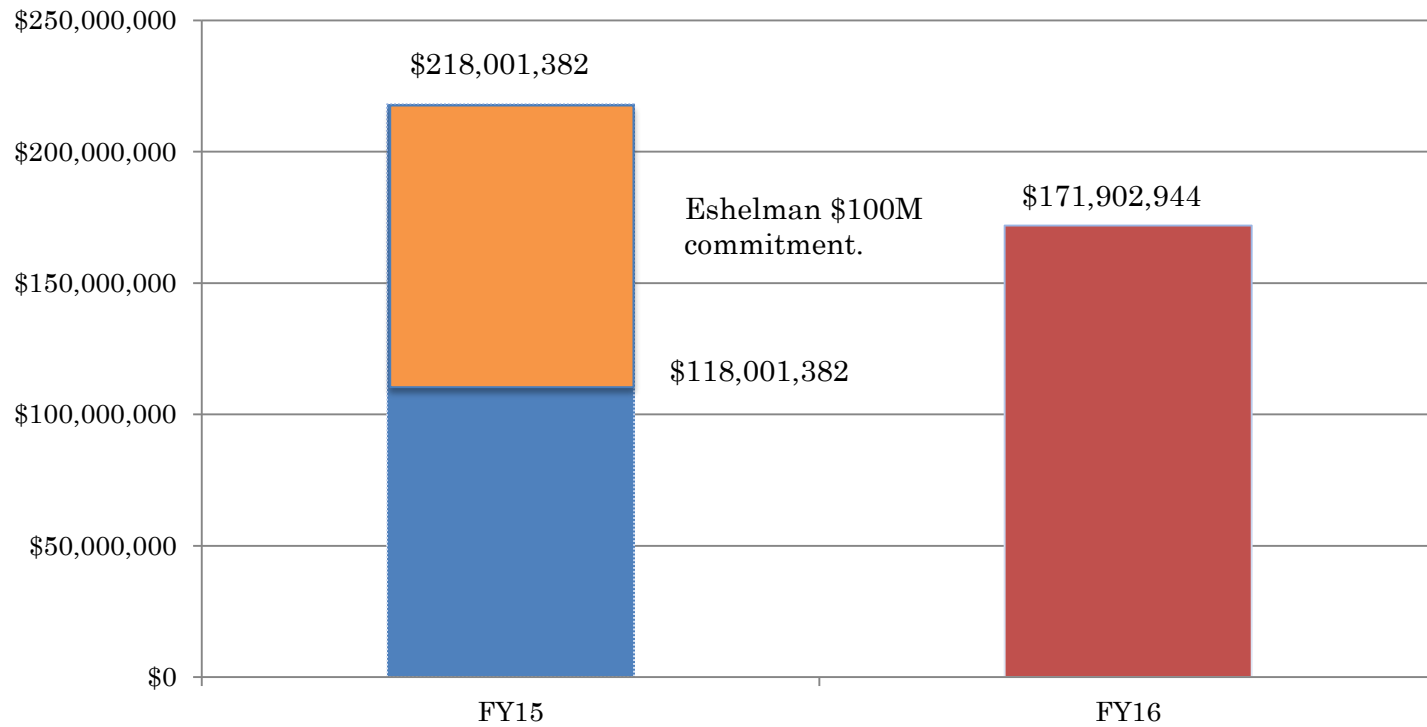
Cash Totals



YTD comparison as of 1/25/16
Does not include December grant totals.



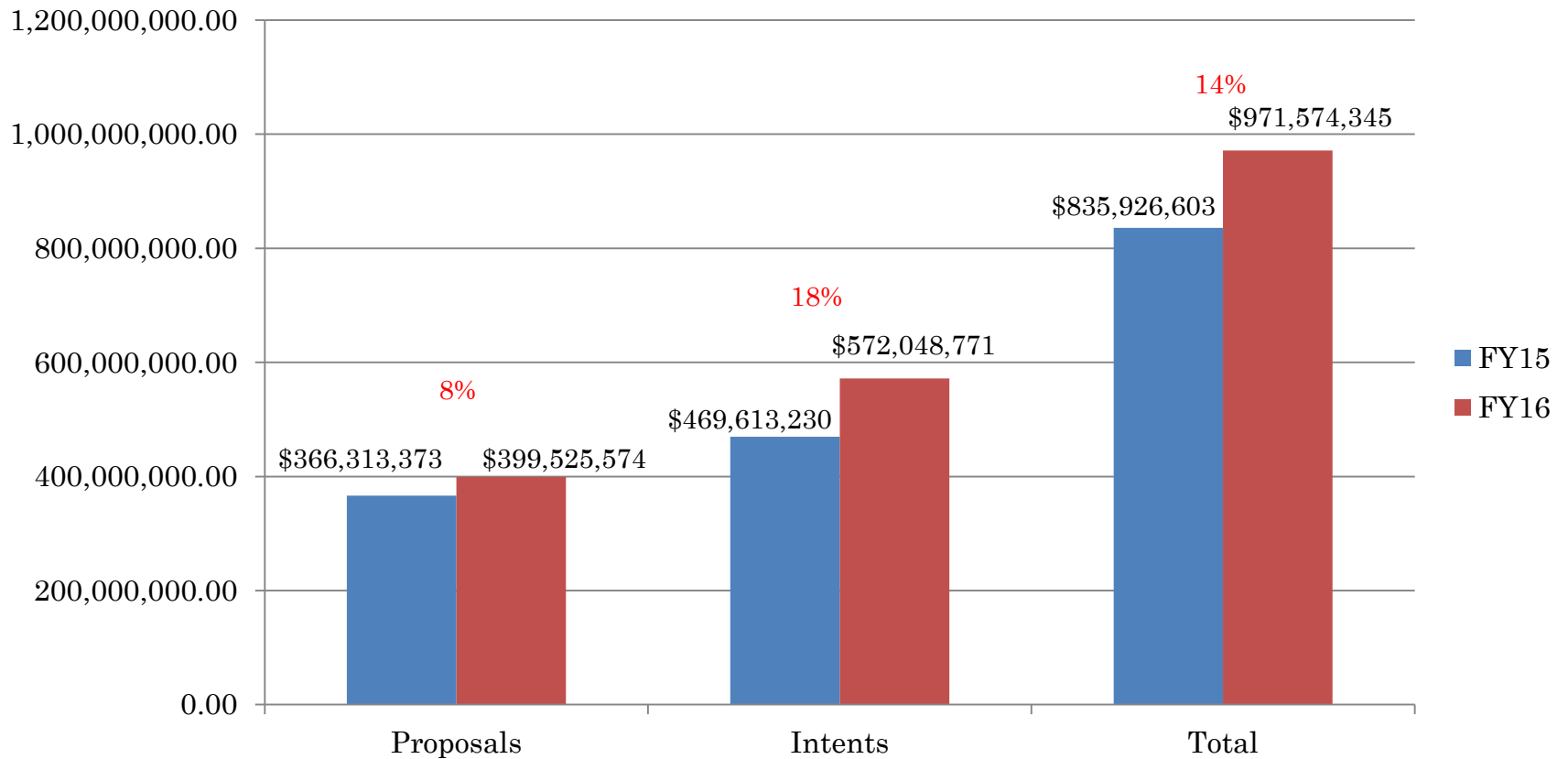
New Cash and Commitments Totals



YTD Comparison as of 1/25/16



The Pipeline



YTD Comparison as of 1/8/16



THE UNIVERSITY
of NORTH CAROLINA
at CHAPEL HILL

TarHeel Tuesday

- Goal: \$150,000 and 600 gifts
- The donor goal was met by 1 pm.
- The dollar goal was met by 7:30 pm.
- FY15: \$75,305 and 329 gifts

Total Dollars	\$235,902.64
Total Gifts	1,054
Total Donors	933
Average Gift	\$223.81



TAR HEEL TUESDAY^{12 01 15}



1,054
gifts

\$235,902.64
dollars raised

Gifts support:



Student
scholarships



Faculty
support



Program
support



Other
resources



THE UNIVERSITY
of NORTH CAROLINA
at CHAPEL HILL



THE UNIVERSITY
of NORTH CAROLINA
at CHAPEL HILL

Development Update

January 27th, 2016

Meeting of the UNC-CH Board of
Trustees

David S. Routh
Vice Chancellor for Development

Initial Charter Approved July 22, 2004

1st Revision March 2, 2012^{2nd} Revision ????

Revised March 2, 2012, Initial Charter Approved July 22, 2004

Finance, Budget, Finance, and Audit Committee Infrastructure,
and Audit Committee
Audit Related Charter

This Finance, Infrastructure, and Audit Budget, Finance, and Audit Committee Charter (Charter) is an administrative supplement to the Bylaws of the Board of Trustees of the University of North Carolina at Chapel Hill. Article I section 104 – Committees. This administrative supplement to the by-laws addresses audit matters at the University.

I. Background

Each special responsibility constituent institution, including the University of North Carolina at Chapel Hill, is required by State law to have a financial audit conducted annually by an external auditor. Historically, the Office of the State Auditor has conducted the annual financial audit and has not performed any non-audit services, including those prohibited by the Sarbanes Oxley Act. The Office of the State Auditor determined staff assignments for individual audits, including rotation of Audit Managers for each audit client. General Statute 116-30.8 provides that the University may contract with the State Auditor or with a certified public accountant to perform the annual financial audit. This Charter shall take effect when approved and shall remain in effect until amended, change applies to fiscal year 2011-12 and subsequent fiscal years.

II. Purpose

One standing committee of the Board of Trustees of the University of North Carolina at Chapel Hill (Board) shall be known as the Finance, Infrastructure, and Audit Budget, Finance, and Audit Committee Committee (Committee). In addition to other matters, The primary audit related function of the Committee is to assist the Board in fulfilling its responsibilities related to the:

- Integrity of the University's financial statements and other financial reporting;
- Adequacy and effectiveness of systems of internal control; and
- Independence and performance of the external and internal audit functions.

The duties of the Committee do not replace or duplicate established management responsibilities and delegations. Instead, the Committee serves in an advisory capacity to guide the direction of management's actions and set broad policy for ensuring accurate financial reporting, sound risk management, and ethical behavior.

Formatted: Superscript

Commented [PP1]: Reflects prior name change and requirement in the *UNC GA Best Financial Practices* guidelines that the title of the Trustees committee responsible for audit matters must include "audit".

Commented [PP2]: Added to clarify that the charter is not intended to define and govern all duties of the Committee, only those related to audit matters.

Commented [PP3]: Colleges and universities are not subject to Sarbanes Oxley.

Commented [PP4]: Statue amended and universities are no longer allowed to engage a public accounting firm to perform the annual financial statement audit.

Formatted: Font: (Default) Times New Roman, 10 pt

Formatted: Superscript

III. Composition

The Chair of the Board will select members of the Committee. Each Committee member must be independent of management of the University and free of any relationship that would impair such independence. Members may not receive consulting, advisory, or other fees from the University.

The UNC Board of Governors is responsible for appointing Board of Trustee members who understand financial data and can serve on the Committee. A majority of the members of the Committee should be financially literate and, if possible, at least one member should be a financial expert. Financial literacy is the ability to understand fundamental financial information and statements. A financial expert is someone who has an understanding of generally accepted accounting principles and financial statements preferably relative to higher education; experience in applying such principles; experience in preparing, auditing, analyzing, or evaluating financial information; experience with internal controls and procedures for financial reporting; or an understanding of the audit committee function. If feasible, the role of financial expert will be rotated on an annual basis.

Commented [PP5]: The need for these capabilities were initially defined in the Sarbanes-Oxley Act. While that Act does not apply to not-for-profit universities, the need for financial literacy on an Audit Committee is a best practice.

Commented [PP6]: Is rotation of the financial expert something the Committee wants to commit to?

IV. Duties and Responsibilities

The following shall be the principal audit-related duties and responsibilities of the Committee or the Chair on behalf of the Committee:

- Meet at least four times during the year.
- Monitor internal control systems at the University through activities of the internal and external auditors.
- Obtain assurance that the University is performing self-assessments of operating risks and evaluations of internal control on a regular basis.
- Confirm with University management that the University has not engaged the external auditor to perform any prohibited, non-audit services as defined in the Sarbanes-Oxley Act.
- Request, as needed, that the external auditor rotate the Audit Manager assigned to the University's financial statement audit.
- Receive the audit engagement letter and other significant audit related communications from any the external auditor. The external auditor will be directed to copy the Committee on any such communications.
- At the beginning of the audit cycle, review and approve the annual internal audit plan for the campus. At the end of the cycle, reviewing a comparison of the approved internal audit plan to internal audits performed. Review and approve the Internal Audit Department's Charter, annual audit schedules, and long range audit plans. Confirm with the Director

Commented [PP7]: Required by General Administration

Commented [PP8]: Included in GA Best Financial Practices – does the Committee want to do this?

University will need to have a process that ensures that Committee members get copies of the annual Self-Assessment of Internal Controls over Financial Reporting or that management affirms that the assessment has been done.

Also, Committee might want to get information about the University's Key Performance Indicators reported to General Administration.

Commented [PP9]: Striking since the University no longer has the option to engage a public accounting firm to do its financial statement audit instead of the Office of the State Auditor. As stated in the Background section, the Office of the State Auditor determines staff assignments and rotation.

Commented [PP10]: Better describes responsibility.

Formatted: Font: (Default) Times New Roman, 10 pt

of Internal Audit, on an annual basis, efforts to coordinate the work of the Internal Audit Department and the external auditor to ensure complete audit coverage, reduce duplication of work, and use audit resources effectively.

- As needed, review and approve revisions to the Internal Audit Department's Charter.
- Be available to meet during the year with the external auditor for consultation purposes or to discuss the auditor's judgments about the quality, not just the acceptability, of the University's accounting principles and underlying estimates in its financial statements.
- Receive management's representation letter to the external auditor.
- Review the results of the annual financial audit with the North Carolina State Auditor or his or her designated representative.
- Discuss the results of any other audit performed and report/management letter (i.e. information system audits, investigative audits, etc.) issued by the North Carolina State Auditor with either the State Auditor or his staff, the Director of Internal Audit, or appropriate campus official.
- For any audit finding contained within a report or management letter issued by the State Auditor, review the institution's corrective action plan and receive a report once corrective action has taken place.
- Discuss the results of any audit performed by other external auditors and, if there were audit findings, review the institution's corrective action plan and receive a report once corrective action has taken place. ~~Receive year-end financial statements, findings, the management letter, and other matters from the annual independent audit.~~
- Review internal audit reports and summaries of external and internal audit activities. Ensure that management is devoting adequate attention to issues raised.
- Review all audits and management letters of University Associated Entities as defined in section 600.2.5.2[R] of the UNC Policy Manual.
- Review and resolve any significant disagreement between University management and the external auditor or the Internal Audit Department in connection with the preparation of the financial statements or with other audits.
- Obtain annual assurance form the Director of Internal Audit that all internal audits were conducted in accordance with Professional standards.
- Consult with the appointing authority regarding the selection and removal of the Director of Internal Audit.
- Oversee the University's mechanisms for receiving, resolving, and retaining records of complaints, regarding accounting, internal control, and auditing matters. Receive briefings from University management or the Director of Internal Audit regarding

Formatted: Superscript

Commented [PP11]: Moved from prior bullet

Commented [PP12]: Who sends?

Formatted: Normal, Indent: Hanging: 0.23", Right: 0", Space Before: 0 pt, Line spacing: single, Don't hyphenate, Tab stops: Not at 0.54"

Commented [PP13]: Better defines actual responsibilities.

Commented [PP14]: Should the Committee get a copy of reports from all external audits of the University and any related corrective action plans? This will include audits by any regulatory body as well as the annual NCAA financial agreed-upon-procedures review.

Having them get these reports is a good idea. If we define this as a responsibility of the Committee, the University will need a way to be sure that units campus-wide know to send these reports to the Chancellor's Office to be posted to the Trustee website.

Commented [PP15]: This duty is also in the Best Practices document but an alternative approach might be better.

Only a few AE audit reports have findings. It might be preferable for the Committee to get a summary report that lists the AE findings and subsequent reports that states what's been done to fix a finding.

Commented [PP16]: A responsibility not previously stated.

Commented [PP17]: Part of the annual certification letters.

Formatted: Font: (Default) Times New Roman, 10 pt

Initial Charter Approved July 22, 2004

1st Revision March 2, 2012

[2nd Revision ????](#)

Formatted: Superscript

any significant complaints or misuse of funds.

- Consult with the Office of University Counsel to review any legal matters that may have a significant impact on the University's financial statements or overall financial performance.
- Review and forward with recommendations to the full Board significant management initiatives involving financial reporting matters.

The Committee may modify or supplement these duties and responsibilities as needed.

The Committee shall have the authority to engage, in accordance with State rules and regulations, independent counsel or other advisors as necessary to carry out its duties. The University shall provide appropriate funding as determined by the Committee for payment to advisors employed by the Committee.

The Committee, with the assistance of the Office of University Counsel and the Director of Internal Audit, should periodically review and assess the adequacy of ~~the Budget, Finance, and Audit Committee~~[the Committee](#) Charter.

ATTACHMENT D

DESIGNER SELECTION – BEARD HALL 2ND FLOOR RENOVATION

This project will renovate approximately 13,400 square feet of the existing space on the 2nd floor of Beard Hall into a new classrooms and clinical simulation teaching spaces for the Eshelman School of Pharmacy. The project will also address accessibility deficiencies with the elevator and the restrooms and replace failing building HVAC system located in the attic.

The project budget is \$9,713,728 and will be funded by University funds.

The project was advertised on November 12, 2015. Sixteen (16) proposals were received. Five (5) firms were interviewed on January 5, 2016. Members of the Board of Trustees did not participate in the interviews.

The committee recommended the selection of the three firms in the following priority order:

- | | | |
|----|-----------------|---------------|
| 1. | Perkins Eastman | Charlotte, NC |
| 2. | BBH | Raleigh, NC |
| 3. | BHDP | Raleigh, NC |

The firms were selected for their past performance on similar projects, strength of their consultant team and experience with campus projects.

RECOMMENDED ACTION

A motion to approve the three firms in the following priority order:

- | | | |
|----|-----------------|---------------|
| 1. | Perkins Eastman | Charlotte, NC |
| 2. | BBH | Raleigh, NC |
| 3. | BHDP | Raleigh, NC |

December 3, 2015

Mr. Joe Fenton
The University of North Carolina at Chapel Hill
Department of Facilities Planning & Design
103 Airport Drive, Campus Box #1090
Chapel Hill, NC 27599-1090

Reference: Beard Hall 2nd Floor Renovations Project
The University of North Carolina at Chapel Hill, School of Pharmacy

Dear Mr. Fenton and Members of the Selection Committee:

Please accept the enclosed response for planning, programming and comprehensive renovations of Beard Hall, part of the UNC Eshelman School of Pharmacy. We propose a partnership of Perkins Eastman and Rotman Architecture, PA, to bring exceptional knowledge of the department, its needs, and the existing building. Additionally, this partnership will leverage national expertise in medical education, extensive work in prototyping, and executing new learning and technology platforms. We have the capacity to deliver the project within expected time-frames, cost effectively.

Our team is made up of an extremely knowledgeable consultant group. We have worked with many of these firms and all of them have completed work of this type on the UNC-Chapel Hill campus.

We understand the overarching goals for this project include master planning activities to address global accessibility access concerns, and the development of a coherent campus for the School of Pharmacy (Schematic Level). In addition, the assignment will include design services for a comprehensive renovation to Beard Hall 2nd Floor classrooms, core vertical circulation and building systems – all to be completed while the building remains in use. Our team is prepared to work with UNC stakeholders who will provide guidance on this project including UNC School of Pharmacy, Facilities Planning and Services, Environmental Health, Energy Services, Public Safety and Transportation, and others as deemed appropriate. Our approach will develop a design solution that is comprehensive, sensitively phased, and affordable using a process to engage, collaborate, and engender ownership.

Key qualifications for this assignment include:

- **National Capability, Local Management and Delivery** - Our teaming approach provides the School of Pharmacy well known leadership capabilities, planning and programming expertise. Rotman Architecture, PA has over 20 years of experience with UNC-Chapel Hill School of Pharmacy staff and faculty and the Charlotte office of Perkins Eastman will provide the necessary project design and production support for project needs.
- **National Medical Education Experience** - Our team members and firm wide resources have worked in 'real world' pharmaceutical environments (U797) with clients like UNC-Wilmington, Rutgers University, Duke University (Singapore), UC Davis, Columbia, UCLA and many more.
- **Experience Prototyping and Implementing Collaborative Learning Models** - Creating dynamic, technology rich learning environments including distance education and active learning space that promote student engagement.
- **Extensive experience with UNC-Chapel Hill and the UNC Eshelman School of Pharmacy** - We are familiar with UNC facilities staff, campus, and the buildings supporting the School of Pharmacy including Beard Hall 2nd floor, where Rotman Architecture, PA is currently working.
- **Over 70% of our Higher Education Work Incorporates Renovation** - work that responds to the ever changing goals and needs of academic institutions and their diverse users. Much of our renovation work mitigates the challenges of phasing and construction in buildings that remain occupied and operational.
- **We Value Long-Term Relationships** - We listen first, and then work diligently to serve each client's specific project goals and budget.

New York
Boston
Charlotte
Chicago
Los Angeles
Pittsburgh
San Francisco
Washington DC
Toronto
Shanghai
Guayaquil
Mumbai
Dubai

We are confident our team and enclosed qualifications demonstrate the proven expertise, leadership and thought provoking approach we can bring to this assignment. If there are any questions pertaining to the information provided, please do not hesitate to contact either of us directly.

Sincerely,

Perkins Eastman



Brad Crotts AIA
704.927.6502
b.crotts@perkinseastman.com

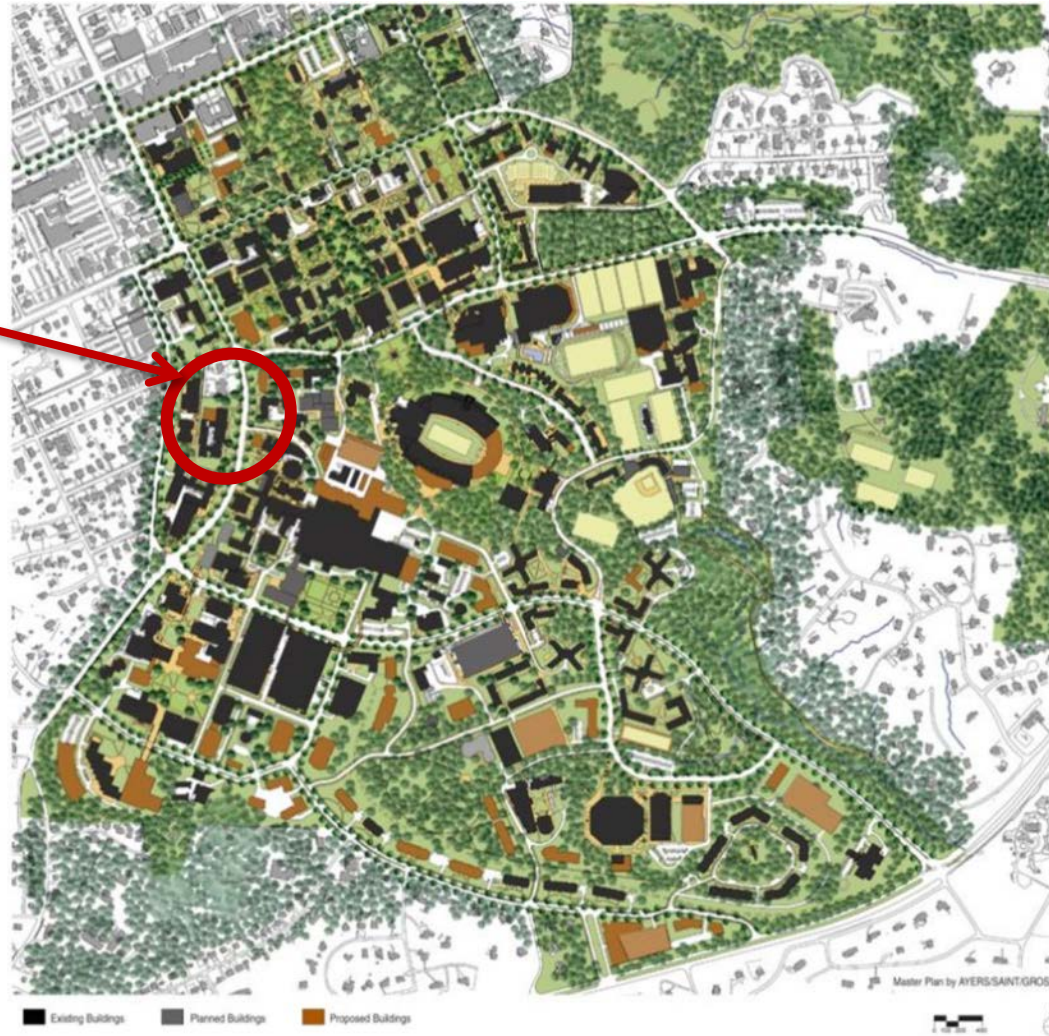
Rotman Architecture, PA



Dave Rotman AIA
919.604.2207
RotmanD@rotmanarchitecture.com

BEARD HALL SECOND FLOOR RENOVATION

PROJECT SITE



CAMPUS LOCATION MAP



THE UNIVERSITY
of NORTH CAROLINA
at CHAPEL HILL

BOARD OF TRUSTEES

JANUARY 2016

ATTACHMENT E

DESIGNER SELECTION - KENAN LABORATORIES BASEMENT AND FLOORS 3-9 FIRE SPRINKLERS

This project will address the fire safety needs for this ten story, 140,410 square feet building in order to meet the current NFPA fire protection requirements. The project will provide for the installation of a new wet pipe fire sprinkler system for the floors 3-9 and the basement. The fire sprinkler systems for the ground, first and second floors were installed under a previous project.

The project budget is \$2,460,000 and will be funded by the 2014 Repairs and Renovation funds.

The project was advertised on November 20, 2015. Nine (9) letters of interest were received. Three (3) firms were interviewed on January 13, 2016. Members of the Board of Trustees did not participate in the interviews.

The committee recommended the selection of the three firms in the following priority order:

- | | | |
|----|--------------------|-------------|
| 1. | McKim & Creed | Raleigh, NC |
| 2. | RDK Engineers | Durham, NC |
| 3. | Engineered Designs | Cary, NC |

The firms were selected for their past performance on similar projects, strength of their consultant team, knowledge and experience with campus projects.

RECOMMENDED ACTION

A motion to approve the three firms in the following priority order:

- | | | |
|----|--------------------|-------------|
| 1. | McKim & Creed | Raleigh, NC |
| 2. | RDK Engineers | Durham, NC |
| 3. | Engineered Designs | Cary, NC |
-

December 17, 2015

152651

Ms. Amy E. Dean, PE, LEED AP
Structural Engineer / Project Manager
University of North Carolina at Chapel Hill
103 Airport Drive
Giles F. Horney Building
Suite 202
Chapel Hill, NC 27599-1090

RE: Kenan Laboratories Floors 3-9 Fire Sprinklers

We are excited to submit our qualifications to you on this project. Fire protection upgrade projects, particularly when occupied labs are involved, require a detail-oriented and collaborative approach to ensure both the scope of work and phasing/outage requirements are clearly defined and coordinated in the project documents.

Our team has outstanding related project experience on the UNC Chapel Hill campus including the Kenan Building Energy Conservation Measures project and the Davis Library Advanced Planning project.

Based on our experience at the Kenan Building, we understand the tight construction in the basement and the long term infrastructure planning for the building. These elements are critical to ensure this fire protection project is coordinated with all the renovation work that is needed for Kenan. The Davis Library Advanced Planning project included planning and budgeting for a complete fire protection system upgrade and Davis is also a high rise building with a fire pump.

We are submitting to you a proven team that has specific expertise in fire protection upgrade projects, including laboratory projects. Our team includes **RND Architects** who we have partnered with on several laboratory projects. We also have **Froehling & Robertson, Inc. (F&R)** for asbestos abatement design if the need arises. F&R is a HUB-certified firm that has worked with us on the Kenan Labs Building Energy Conservation Measures project and has a long history of partnering with McKim & Creed.

1730 Varsity Drive

Suite 500

Raleigh, NC 27606

In regards to the technical approach to this project, we have extensive fire protection system experience that brings value to UNC Chapel Hill for a project of this type. We are intricately familiar with all performance and fire pump requirements as required by SCO, and have extensive experience on sprinkler systems in high rise construction (including Davis Library, and Hearst Tower in downtown Charlotte). This includes going beyond performance based design, as our team is capable of providing branch piping and head layouts that may be needed for a complicated project such as this.

919.233.8091

We understand that a new room will be established for the fire pump location in accordance with current code, and we will review location options with UNC Chapel Hill on the basement and ground floor levels to ensure the best long term location is

Fax 919.233.8031

identified and selected as part of this project. We also fully understand the fire alarm system integration that needs to occur and the new front-end fire alarm panel that is being requested by UNC Chapel Hill. McKim & Creed recently completed a very similar fire alarm panel migration at Berryhill Hall as the prime consultant working directly with UNC Chapel Hill.

By selecting McKim & Creed, you will have a familiar and experienced team - a team that believes in proactive communication throughout the design and construction process to bring together ideas on finalizing project scope and phasing, and a team with a history of performance both at UNC Chapel Hill and the State Construction Office. All of our current UNC Chapel Hill HVAC projects will have design completed and be in the construction phase by the time this project starts, and will not be in conflict with this project due to our personnel involved on these projects. As such, McKim & Creed has ample resources to be fully dedicated to this project.

We value our excellent, long standing relationship with UNC Chapel Hill staff and look forward to continuing this working relationship under this contract. Our team knows, and can do, what it takes to make this project work so that your needs are met.

Respectfully submitted,
McKim & Creed, Inc.

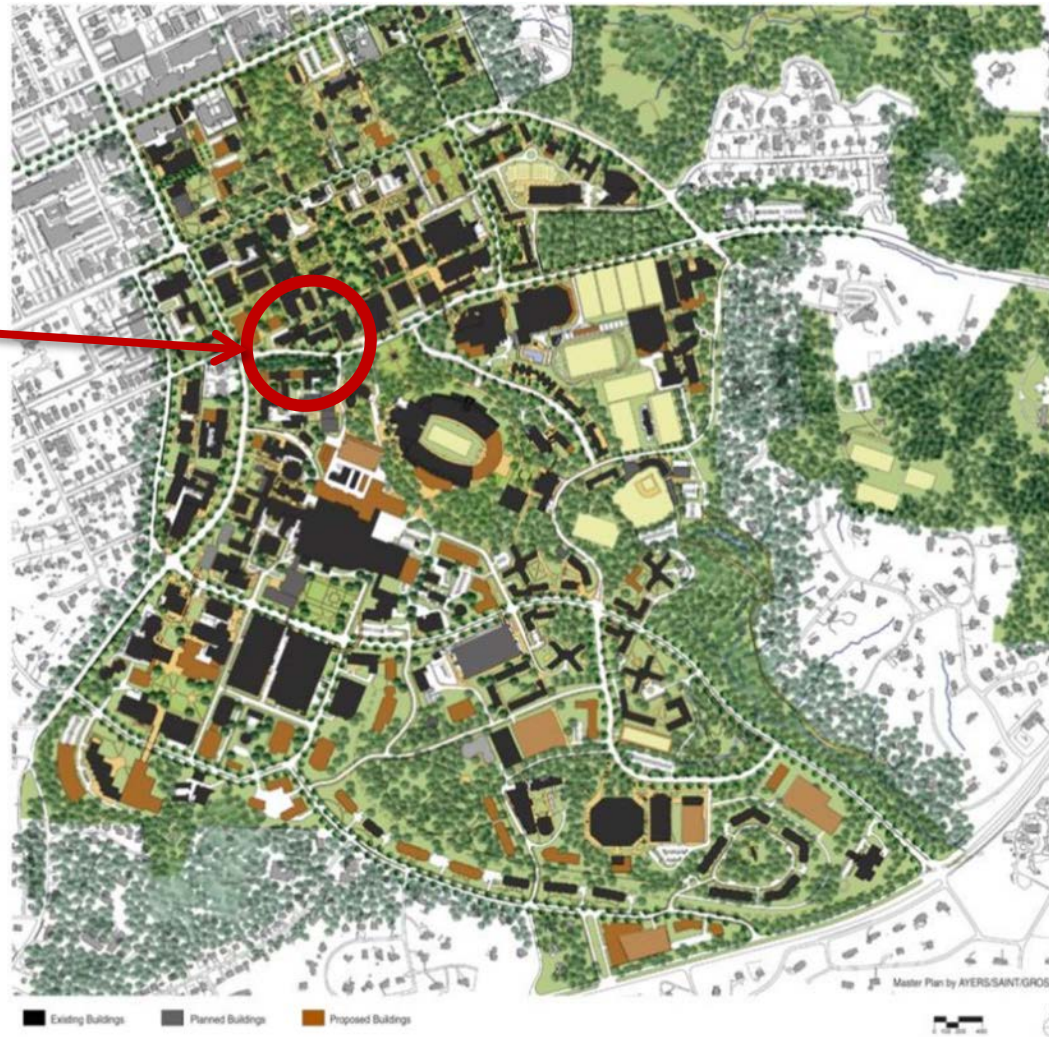


Matthew E. Daves, PE, LEED AP, CBCP
Project Manager
mdaves@mckimcreed.com



KENAN LABORATORIES FIRE SPRINKLER

PROJECT SITE



CAMPUS LOCATION MAP



THE UNIVERSITY
of NORTH CAROLINA
at CHAPEL HILL

BOARD OF TRUSTEES

JANUARY 2016

ATTACHMENT F

DESIGNER SELECTION – MBRL/GLAXO ENERGY CONSERVATION MEASURES – AIRFLOW REDUCTION

This project will implement airflow ventilation reduction at the MBRL portion (approximately 13,500 gross square feet) of the building using the existing constant-volume controlled terminals with reheat coils and the exhaust terminals. The existing constant volume ventilation system will be converted to a variable volume air supply distribution system based upon the minimum air ventilation and space cooling requirements.

The Project budget is \$580,000 and will be funded by University funds.

This project was advertised on November 13, 2015. Eight (8) proposals were received. Three (3) firms were interviewed on January 6, 2016. Members of the Board of Trustees did not participate in the interviews.

The committee recommended the selection of three firms in the following priority order:

- | | | |
|----|---------------------|-------------|
| 1. | Stanford White | Raleigh, NC |
| 2. | McKim & Creed, Inc. | Raleigh, NC |
| 3. | RDK Engineers | Durham, NC |

The firms were selected for their strength of the project team, specific project approach on recent Energy Conservation Measures projects and previous University and State Construction Office experience.

RECOMMENDED ACTION

A motion to approve the three firms in the following priority order:

- | | | |
|----|---------------------|-------------|
| 1. | Stanford White | Raleigh, NC |
| 2. | McKim & Creed, Inc. | Raleigh, NC |
| 3. | RDK Engineers | Durham, NC |



PO Box 19944 | Raleigh, NC 27619 | tel 919.832.8118 | fax 919.832.8120 | stanfordwhite.com

December 4, 2015

Mr. Wm Keith Snead, LEED AP
Project Manager
Facilities Planning Office
UNC Chapel Hill
103 Airport Drive, Suite 202E
Chapel Hill, NC 27599

Re: Energy Conservation Measures
MBRL / Glaxo
UNC Chapel Hill

Dear Keith:

Thank you for corresponding with me regarding this project.

Stanford White is very interested in providing engineering services to implement energy conservation measures at the Glaxo/Molecular Biology Research Lab at UNC Chapel Hill.

Stanford White has the qualifications and expertise to successfully engineer this project, most notably:

- Lab HVAC design
- Lab energy conservation measures
- Lab projects (new, renovation, teaching, research, public, private)
- University & College experience in North Carolina

A response to your list of critical selection factors for designers follows this letter. A firm profile, staff resumes, and examples of experience are also included in this proposal package.

We appreciate the opportunity of offering our professional engineering services to you. We are proud of our quality work and our history of client satisfaction. We look forward to continuing our working relationship with you and UNC Chapel Hill.

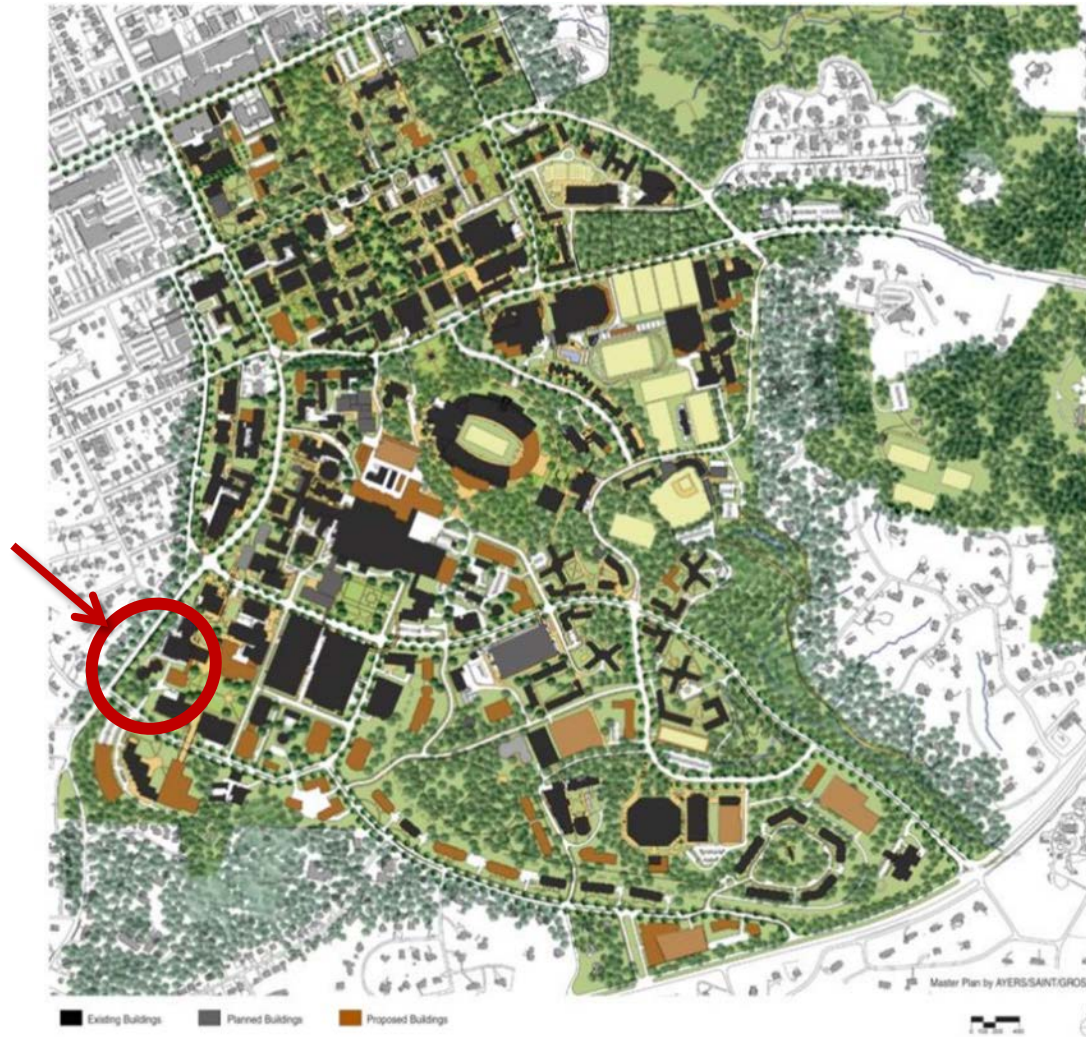
Sincerely,

STANFORD WHITE, Inc.

William M. Smith, PE
President
wmsmith@stanfordwhite.com

MBRL/GLAXO BUILDING ENERGY CONSERVATION MEASURE

PROJECT SITE



CAMPUS LOCATION MAP



THE UNIVERSITY
of NORTH CAROLINA
at CHAPEL HILL

BOARD OF TRUSTEES

JANUARY 2016

ATTACHMENT G

APPROVAL FOR THE DEMOLITION OF ODUM VILLAGE UNITS

The demolition of the thirty-six (36) buildings which contain a total of two hundred thirty-six (236) apartments is necessary for future campus development. The apartments will not be allowed as residential units after the fall of 2016 due to the lack of a proper fire protection system. The Power Generation and Chilled Water Plants at Manning Plant and Durham-Orange Light Rail Transit are two projects currently in design that will require development of some of the existing building sites.

The project budget is \$5.1M and will be funded by University funds.

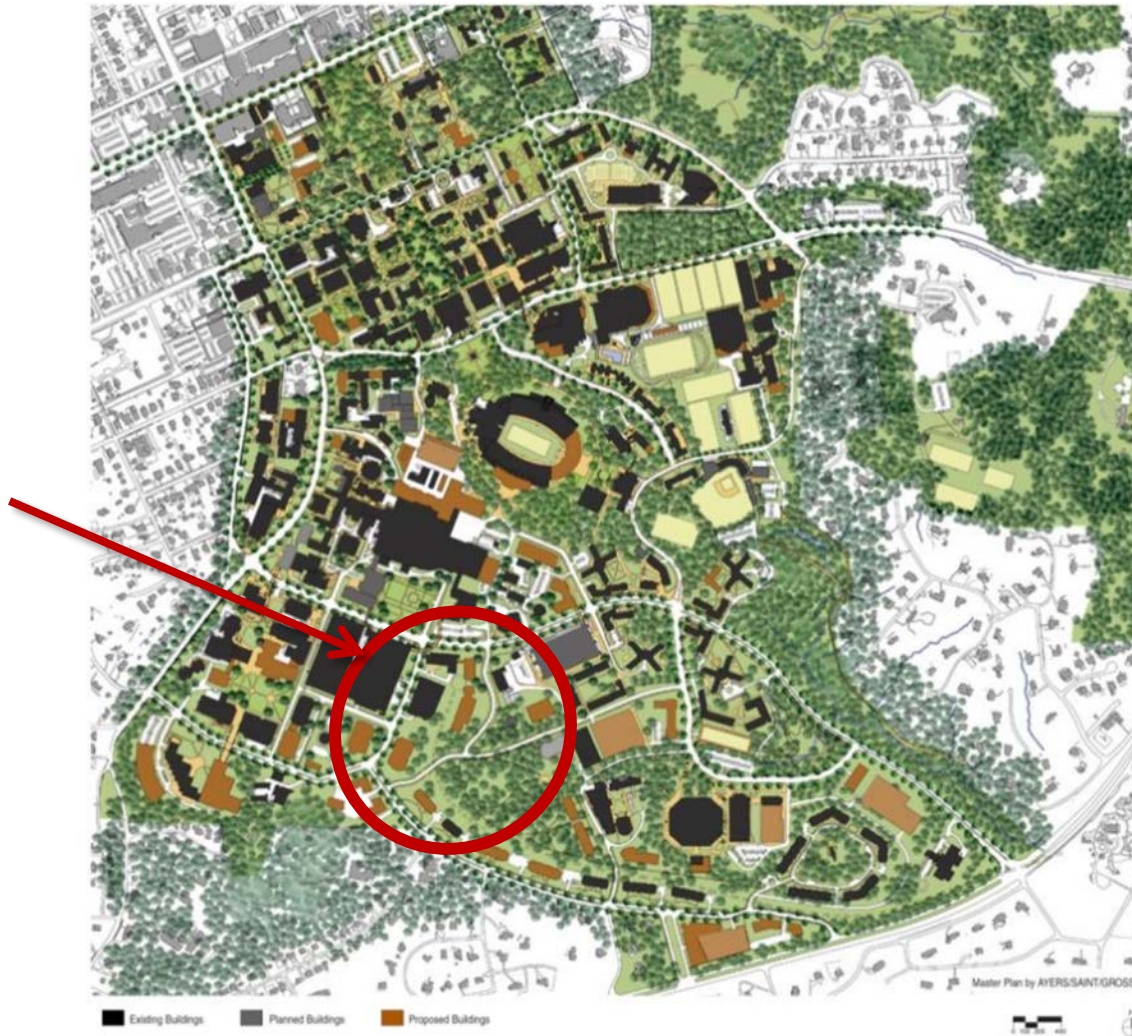
Recommended action:

A motion to approve the demolition of the following thirty-six (36) buildings at Odum Village:

- Units 300 - 306 Mason Farm Road, four (4) buildings
- Units 401 - 407 Mason Farm Road, two (2) buildings
- Units 100 - 109 Bernard Street, four (4) buildings
- Units 200, 202, 204, 206, 208, 210, 212, 214 & 216 Branson Street, three (3) buildings
- Units 217 - 239 Jackson Circle, six (6) buildings
- Units 600 - 630 Hibbard Drive, twelve (12) buildings
- Units 700 - 711 Hibbard Drive, five (5) buildings

DEMOLITION OF ODUM VILLAGE UNITS

PROJECT SITE



CAMPUS MASTER MAP



THE UNIVERSITY
of NORTH CAROLINA
at CHAPEL HILL

BOARD OF TRUSTEES

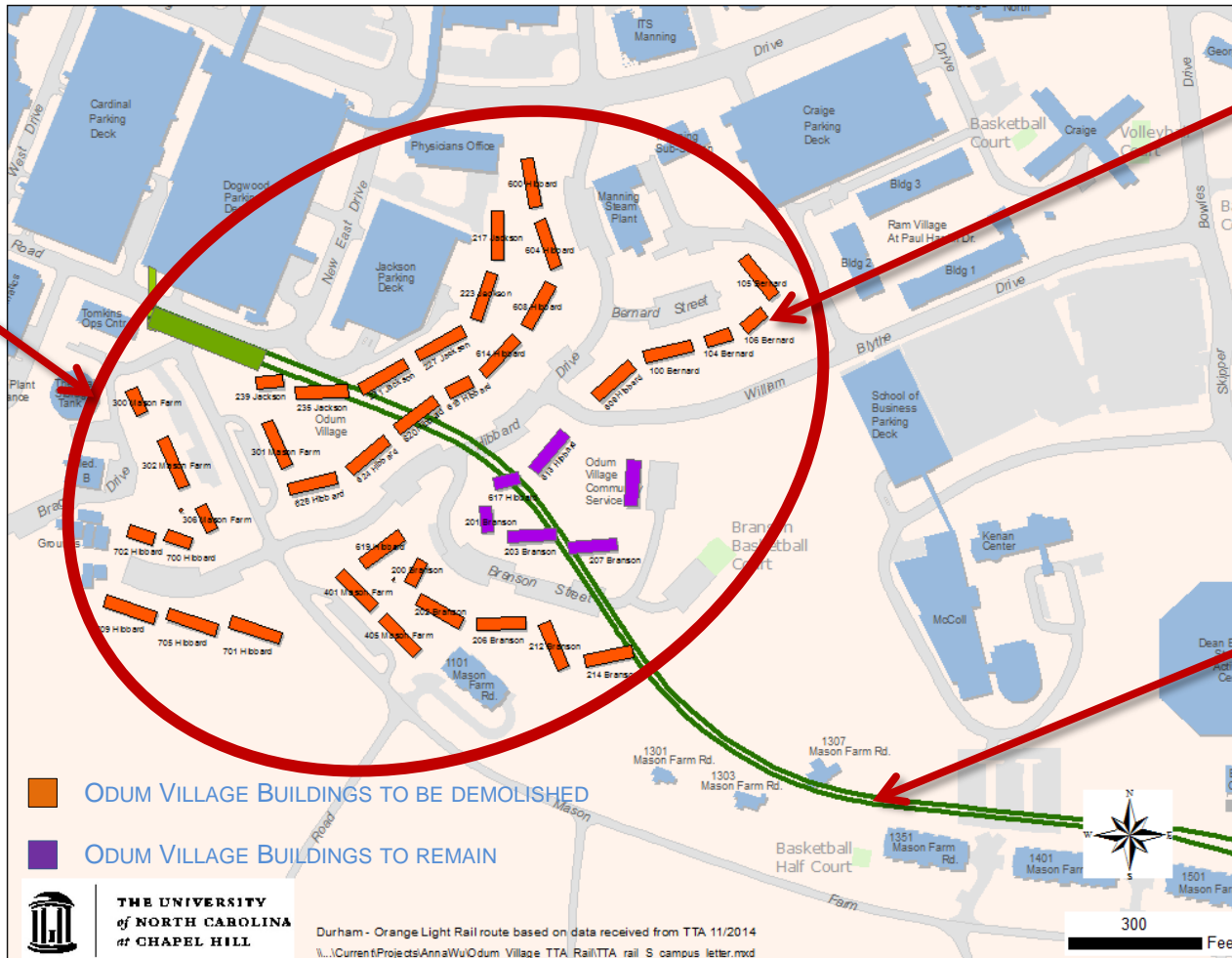
JANUARY 2016

DEMOLITION OF ODUM VILLAGE UNITS

PROJECT SITE

PROPOSED
POWER
GENERATION
AND CHILLED
WATER PLANTS
SITE

PROPOSED
DURHAM-
ORANGE LIGHT
RAIL TRANSIT



PROPOSED PROJECTS MAP

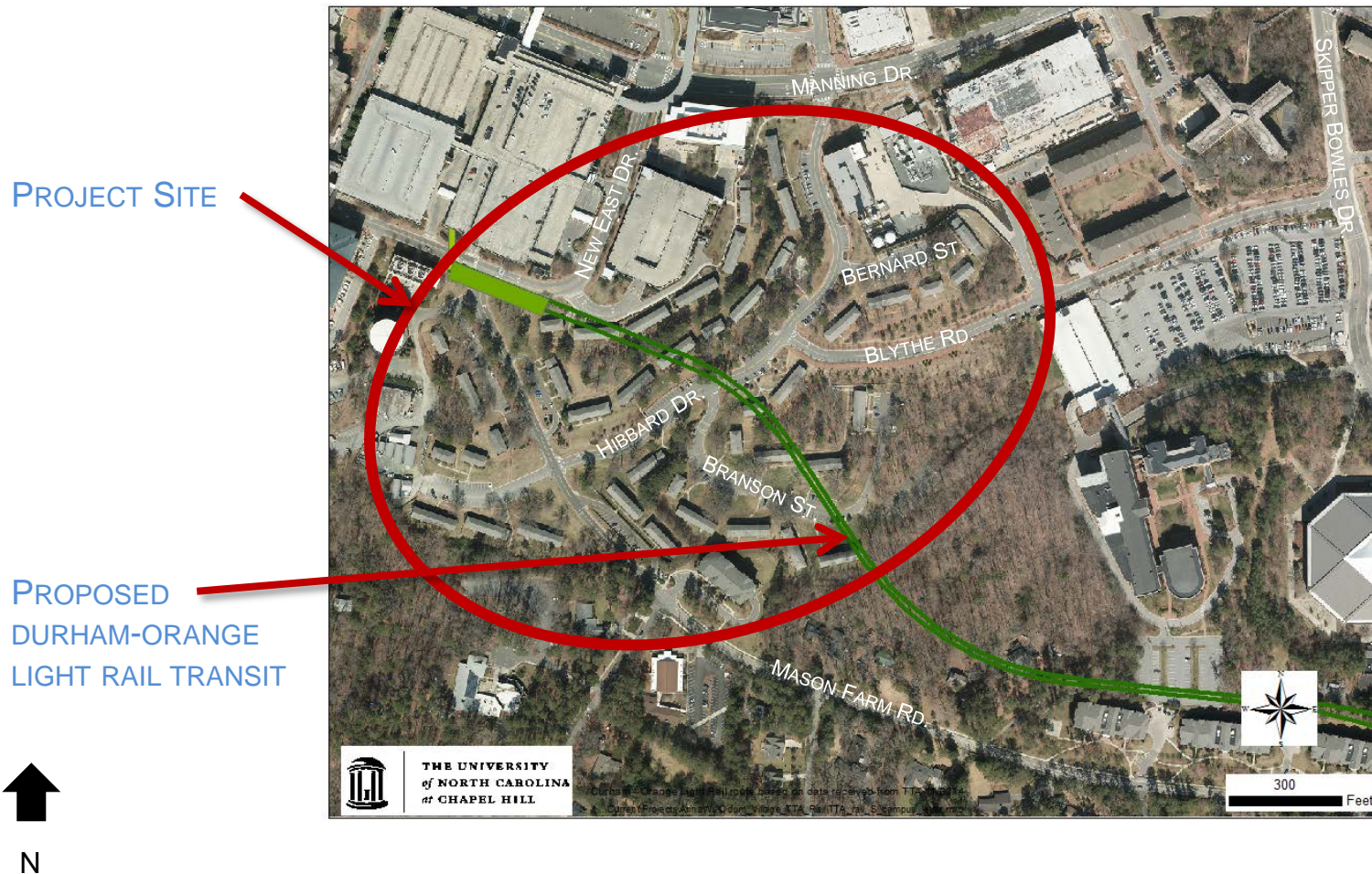
BOARD OF TRUSTEES

JANUARY 2016



THE UNIVERSITY
of NORTH CAROLINA
at CHAPEL HILL

DEMOLITION OF ODUM VILLAGE UNITS



AERIAL PHOTO WITH PROPOSED LIGHT RAIL TRANSIT



THE UNIVERSITY
of NORTH CAROLINA
at CHAPEL HILL

BOARD OF TRUSTEES

JANUARY 2016

DEMOLITION OF ODUM VILLAGE UNITS



UNITS 217 – 225



UNITS 229 – 231



UNITS 231 – 239



UNITS 302 – 304



UNITS 624 – 628



UNITS 614 – 622

TYPICAL ODUM VILLAGE BUILDINGS



THE UNIVERSITY
of NORTH CAROLINA
at CHAPEL HILL

BOARD OF TRUSTEES

JANUARY 2016

REPORT TO THE FINANCE
AND INFRASTRUCTURE
COMMITTEE
OF THE
BOARD OF TRUSTEES

Internal Audit Department

University of North Carolina
at Chapel Hill

January 27, 2016

UNC - CHAPEL HILL
INTERNAL AUDIT DEPARTMENT
SUMMARIES OF AUDIT ACTIVITIES AND PROJECTS COMPLETED AND IN PROCESS
AUGUST 24 TO DECEMBER 13, 2015

COMPLETED

2015/16 Risk Assessment and Audit Plan – this project forms the basis for selecting items scheduled for audit in fiscal year 2014/15. The risk assessment process defines auditable units – a combination of core business practices, information technology systems and activities, individual schools and departments, cross-department activities, and current issue in higher education – and evaluates the significance or risk associated with each auditable.

Members of University management provide input in identifying risks and opportunities that the University has making the audit work plan a collaborative product. Discussion with these individuals provide the opportunity to share information about risks and opportunities across the University.

Environmental Sciences and Engineering – a financial, compliance, and operational review of activities related to time-keeping, travel, and procurement.

We performed this review at the request of the Dean of the Gillings School of Global Public Health. Our review disclosed:

- Inadvisable time-keeping practices such as one person frequently entering work time for someone else and employees entering work time at the beginning of a reporting period before the hours were worked;
- Multiple edits to the same time entries; and
- Employees who “clocked in” from a UNC-CH IP address but “closed out” from an off-campus address (or the reverse) which meant that employee was being paid for commute time between home and work.

Each of these issues were also noted in a 2014 audit of the department but were not corrected by the department’s business manager.

We also found inappropriate purchases made by and payments to an individual who is no longer with the department. The University is working with UNC Public Safety to recover the funds lost.

In addition to the project report, we will issue a supplemental report with recommendations for managing university-wide risks associated with a decentralized operating environment. Suggestions include more use of joint business service centers and data mining and analysis.

IN PROCESS

Center for Health Promotion and Disease Prevention – a financial, compliance, and operational review of fiscal processes in the Center particularly those related to retro-active salary changes and other grant management activities. We found issues related to grant management and are working with center management to identify ways to resolve these issues. Draft report is with management.

UNC - CHAPEL HILL
INTERNAL AUDIT DEPARTMENT
SUMMARIES OF AUDIT ACTIVITIES AND PROJECTS COMPLETED AND IN PROCESS
AUGUST 24 TO DECEMBER 13, 2015

Orthodontics – assistance to management with a review of processes and transactions related to acquisition of dental molds and implants for patient care and instructional purposes. Potential issues related to procurement and patient information.

Learn NC – limited review of activity in sponsored awards managed by the School of Education. The review will focus on allocability of costs and the nature of financial information provided to award principal investigators.

Coal Sorbent Contract – review of procurement process related to purchase of limestone and similar materials used to reduce sulfur-dioxide emissions from the University's coal-fired boilers. Also, reviewing monitoring processes related to sorbent quality and performance.

Clery Act Reporting – a review of processes used to manage notifications and reporting required by the "Jeanne Clery Disclosure of Campus Security Policy and Campus Crime Statistics Act". Internal Control review in process.

Historically Under-utilized Business Program – a review of processes used to promote and encourage full and open competition, promote equal access to contracting opportunities among the various contractors and vendors that do business with the University, and ensure compliance with policy a reporting requirements related to this program. Planning and preliminary survey in process

Auxiliary Services Equipment – referral from the Office of the State Auditor – review of equipment acquisition and management related to Dining Services.

Lineberger Cancer Center Grants - referral from the Office of the State Auditor – review of cost management related for sponsored funds.

Follow-up Reviews

- School of Law
- Women's Studies

On-going Advisory Projects and Committee Work

- PeopleSoft conversion
- HIPAA Security Liaisons;
- University-wide Committee on the Protection of Personal Data;

UNC - CHAPEL HILL
INTERNAL AUDIT DEPARTMENT
SUMMARIES OF AUDIT ACTIVITIES AND PROJECTS COMPLETED AND IN PROCESS
AUGUST 24 TO DECEMBER 13, 2015

- CERTIF;
- IT Governance Committee;
- Policies and Procedures Audit Working Group;
- Ethics and Integrity Working Group; and
- Other short-term projects done to assist management with identifying and managing risks.

Other Activities

- Served as member of search committee for new Chief Privacy Officer
- Continued to expand use of ACL software to develop more powerful analytics.
- Explored ways to use Infoporte and ConnectCarolina queries for data retrieval and analysis.

**UNC Internal Audit
Use of Audit Resources
Summary of Audit Hours Used - FY 2016 as of 12/13/15**

	<u>Budgeted</u>	<u>Pro-Rated Budget -1-</u>	<u>Hours Charged</u>	<u>Variance (Over)/Under</u>	
Total Hours Available -2-	12,133				
<u>Less:</u> Training & Professional Development	(460)	(203)	318	(114)	
<u>Less:</u> Leave	(2,000)	(885)	1,213	(328)	-4-
<u>Less:</u> Other Administrative Time -3-	(1,300)	(575)	490	85	
Total for Leave & Administrative	(3,760)		2,020	(357)	
Hours Available for Projects	8,373				
Routine Audits	3,220	1,424	140	1,284	
Annual Projects	1,250	553	456	97	
Audit Related	1,300	575	891	(316)	
Unplanned Projects	2,700	1,194	1,347	(153)	
Total Scheduled/Charged	8,470		2,834	913	
Under/<Over> Scheduled	(97)				

-1- = budget hours pro-rated for 23 weeks

-2- = seven staff members at 2080 hours/year adjusted for vacancies and medical leave

-3- = meetings, professional reading, and other office activities

-4- = variance due to parental leave and summer vacations in 1st half of fiscal year

-5- = budgeted hours based on being fully staffed in 2nd half of fiscal year but fewer hours available in 1st half due to two vacancies

UNC Internal Audit

2015/16 Audit Schedule as of 12/13/15

Planned Audits

Complete

Large Equipment Repair Contract

In Process

Historically Underutilized Business Program

Clery Act Reporting

Scheduled

Cost Transfers - Sponsored Awards

Title IX Monitoring

Select Agents and Hazardous Materials

Academic Performance Monitoring

Athletics Facilities

Department Audit - TBN

Annual Projects

Complete

2014 Office of the State Auditor A-133 Follow-up (added)

Risk Assessment and Audit Plan

On-Going

Enterprise Resource Planning

In Process

Follow-up for Prior Internal Audit Findings

Scheduled

Follow-up for 2015 OSA Audit

UNC Business Compliance Program 2016

Audit Related

Complete

Etics and Integrity Task Force

On Going

Continuous Auditing

Office Systems

HIPAA Security Liaison

University Committee on the Protection of Personal Data

IT Governance Committee & Data Custodian Work

CERTIF (PCI Standards)

Audit Committee

Audit Planning

Audit Process Improvement

Policies and Procedures Committee

HIPAA Risk Assessment

Chief Privacy Officer Search Committee

Multiple Short-term Advisory Projects

Special Projects & Management Requests

Complete

Energy Services 2015

Environmental Sciences & Engineering #2

In Process

Women's Studies

Orthodontics

Learn NC

Health Promotion and Disease Prevention

Coal Sorbent Contract

Auxiliary Equipment -1-

Lineberger Cancer Center Grants -1-

HPDP - Green Cart

Lease Report

Board of Trustees
The University of North Carolina at Chapel Hill

January 27, 2016

Review of the Types of Leases Held by The University of North Carolina at Chapel Hill

I. Lease Acquisitions (Space Leased to the University by Others)

A. Office Space Leases

- 42647 square feet of office space leased to the University with annual rent payments of \$8,830,548.97 (representing 2.75% increase in leased square feet and 2.30% increase in annual rent payments since the last lease report in July, 2015)
- 63,471 square feet of office space (included in the above-referenced 426,472 square feet) leased to the University in Endowment owned buildings with annual rent payments of \$1,364,626.50 (representing no change in leased square feet and .89% increase in annual rent payments since last lease report in July, 2015)

B. Miscellaneous Leases

- Leases to the University with annual rent payments of \$ 402,741.59. (representing 16.45% increase in annual rent payments since last lease report in July, 2015)

C. Storage Space Leases

- 3,208 square feet of storage space leased to the University with annual rent payments of \$23,316.00 (representing 10.32% increase in leased square feet and 26.74% increase in annual rental payments since the last lease report in July, 2015)

II. Lease Dispositions (Space Leased by the University to Others)

A Rental Houses

- 21 houses (22 leases) with projected annual rent receipts of \$347,702.00 (representing a .26% increase in annual rent receipts since the last lease report In July, 2015)

B. Rental Buildings

- 2 buildings with annual rent receipts of \$5,409,721.00 (representing no change in annual rent receipts since the last lease report in July, 2015)

C. Land Leases

- 78.08 acres of land leased with nominal rent receipts (representing no change in land leased and no change in nominal annual rent receipts since the last lease report in July, 2015)

The University of North Carolina at Chapel Hill
Office Space Leased to UNC-CH Chapel Hill within Chapel Hill/Carrboro
As of January 1, 2016

Owner/Lessor		Lessee Division	Department	Lessee Classification	Funding Source	Location	Lease End Date	Sq Ft	Annual Rent	\$ Per Sq Ft	Renewal Options
1	* The Yaggy Corporation	University Administration	University Development	University Support	100% Department Overhead Funds	400 Roberson Street	1/31/2016	17,864	\$ 342,393.00	\$ 23.00	None
2	Carr Mill Mall Limited Partnership	Health Affairs	Department of Cardiology, Dr. Adams	Research Program	100% Contracts/Grants	200 North Greensboro St.	2/29/2016	549	\$ 9,659.65	\$ 17.60	None
3	137 East Franklin Street LP	Academic Affairs	Carolina Population Center	University Support	100% F & A	136 E. Rosemary Street	4/30/2016	1,073	\$ 24,632.50	\$ 22.96	None
4	Carr Mill Mall Limited Partnership	University Administration	University Development	University Support	100% F & A	200 N. Greensboro Street	5/31/2016	1,812	\$ 31,257.00	\$ 17.25	None
5	137 East Franklin Street LP	Health Affairs	SPH, Dept. of Epidemiology	Research Program	100% F & A	137 E. Franklin Street	5/31/2016	12,193	\$ 275,736.55	\$ 22.62	One 1 yr w/2.5% inc
6	137 East Franklin Street LP	Health Affairs	SOM, Health Behavior and Health Education	Research Program	100% Trust Funds	136 E. Rosemary Street	7/31/2016	2,014	\$ 46,445.29	\$ 23.06	Two 2 yr w/2.5% inc
7	Carr Mill Mall Limited Partnership	Health Affairs	Medical Allied Health	Clinical Program	100% Trust Funds	200 N. Greensboro Street	8/31/2016	1,803	\$ 32,358.27	\$ 17.95	Two 1 yr w/2% inc.
8	137 East Franklin Street LP	Health Affairs	SPH, Injury Prevention Research Center	Research Program	42% F & A 58% Trust Funds	136 E. Rosemary Street	9/30/2016	6,555	\$ 160,394.72	\$ 24.47	One 3yr w/2.5%
9	West Franklin Preservation Ltd. Partnership	Health Affairs	Carolina Population Center	Research Program	100% F & A	206 West Franklin Street	11/30/2016	11,600	\$ 209,147.88	\$ 18.03	One 1 yr w/3% inc
10	* 137 East Franklin Street LP	University Administration	Office of University Counsel, Public Records Office	University Support	100% F & A	137 E. Franklin Street	11/30/2016	2,376	\$ 52,913.52	\$ 22.27	None
11	* Eastowne Properties, LLC	Health Affairs	SPH, Department of Nutrition	Research Program	100% F & A	800 Eastowne Drive	12/31/2016	3,186	\$ 48,014.81	\$ 15.07	None
12	* 137 East Franklin Street LP	University Administration	Office of Sponsored Research	University Support	100% Department Overhead Funds	137 E. Franklin Street	12/31/2016	996	\$ 23,419.68	\$ 23.51	None
13	* Ambient Air, LLC	Health Affairs	SPH, Dept. of Epidemiology	Research Program	100% Contracts/Grants	116-A South Merritt Mill	12/31/2016	2,400	\$ 45,569.52	\$ 18.99	None
14	* Legacy Real Property Group	Health Affairs	OB-GYN, Horizon Program	Clinical Program	80% F & A Funds 20% Trust Funds	123 & 127 Kingston Drive	1/31/2017	10,000	\$ 125,000.00	\$ 12.50	None
15	Madison Partners, LLC	Health Affairs	Carolina Population Center	Research Program	100% F & A	211-B West Cameron St.	2/28/2017	5,730	\$ 103,741.65	\$ 18.11	Two 1 yr w/2% inc
16	* Europa Center, LLC	University Administration	College of Arts & Sciences, Deans Office	University Support	100% Departmental Overhead	100 Europa Drive	3/31/2017	4,284	\$ 85,516.68	\$ 19.96	None
17	Europa Center, LLC	University Administration	Office of Technology Development	University Support	100% Trust Funds	100 Europa Drive	5/31/2017	3,759	\$ 73,206.53	\$ 19.48	Two 1 yr.w/2.5% inc
18	600 Franklin Square, LLC	Health Affairs	Dept. of Psychology, PEP Lab	Research Program	100% F & A Funds	1829 E. Franklin Street	6/30/2017	2,435	\$ 46,569.38	\$ 19.13	Two 1 yr w/2% inc.
19	Europa Center, LLC	University Administration	Student Affairs Development Office	University Support	100% State Funds	100 Europa Drive	6/30/2017	1,727	\$ 34,960.96	\$ 20.25	Two 1 yr w/2.5% inc
20	* 137 East Franklin Street LP	Health Affairs	SPH, Collaborative Studies Coordinating Ctr	Research Program	100% F & A	137 E. Rosemary Street	6/30/2017	17,218	\$ 207,759.78	\$ 24.14	One 6 mth w/2.5% inc
21	137 East Franklin Street LP	University Administration	Title IX /ADA Office	University Support	100% F & A	136 E. Rosemary Street	7/31/2017	1,829	\$ 42,182.15	\$ 23.06	None
22	137 East Franklin Street LP	Health Affairs	Carolina Population Center	Research Program	100% F & A	136 E. Rosemary Street	7/31/2017	9,085	\$ 208,556.68	\$ 22.96	None
23	Riddle Properties, Inc.	Academic Affairs	Center for Developmental Science	Research Program	100% F & A	100 E. Franklin Street	9/30/2017	11,026	\$ 259,996.00	\$ 23.58	One 5 yr w/2% inc
24	DDRM Meadowmont Village Center, LLC	Health Affairs	Carolina Population Center	Research Program	100% F & A	400 Meadowmont Village Circle	11/30/2017	15,524	\$ 395,265.88	\$ 25.47	One 5 yr w/3% inc
25	West Franklin Preservation Ltd. Partnership	Health Affairs	Carolina Population Center	Research Program	100% F & A	206 West Franklin Street, Ste. 200B	11/30/2017	1,428	\$ 32,344.52	\$ 22.65	None
26	Madison Partners, LLC	University Administration	UNC Development Office	University Support	100% Trust Funds	207 Wilson Street	11/30/2017	2,970	\$ 54,182.40	\$ 18.25	Two 1 yr w/ 3% inc
27	West Franklin Preservation Ltd. Partnership	University Administration	UNC Development Office	University Support	100% Trust Funds	206 West Franklin Street	12/31/2017	3,446	\$ 67,782.82	\$19.67	Two 1 yr w/<3% inc.
28	137 East Franklin Street LP	University Administration	Ombuds Office	University Support	100% F & A	137 E. Franklin Street	3/31/2018	1,823	\$ 45,966.95	\$ 25.22	One 5 yr w/2.5% inc
29	Europa Center, LLC	Health Affairs	Institute for the Environment	University Support	100% Trust Funds	100 Europa Drive	3/31/2018	12,104	\$ 226,420.45	\$ 18.71	Two 1 yr w/2.5% inc
30	* Europa Center, LLC	Academic Affairs	Morehead Planetarium & Science Center	University Support	100% Trust Funds	100 Europa Drive	3/31/2018	1,000	\$ 12,000.00	\$ 12.00	None
31	Madison Partners, LLC	Academic Affairs	Graduate Student Center	University Support	100% F & A	211-A West Cameron Ave	4/30/2018	2,797	\$ 48,785.27	\$ 17.45	Two 1 yr w/2% inc.

The University of North Carolina at Chapel Hill
Office Space Leased to UNC-CH Chapel Hill within Chapel Hill/Carrboro
As of January 1, 2016

32	Venable Group, LLC	Health Affairs	SOM, Emergency Medicine	Research Program	65% C/G 25% Trust Funds 10% Dept. Overhead Funds	100 Market Street	6/30/2018	5,176	\$ 120,806.16	\$ 23.34	One 5 yr w 3% inc
33	Carr Mill Mall Limited Partnership	Health Affairs	Lineberger Cancer Ctr	Research Program	100% Trust Funds	200 N. Greensboro Street	10/31/2018	6,862	\$ 149,923.72	\$ 21.85	One 5 yr w/2% inc
34	Stone Launis Associates, LLC	Health Affairs	SOM, Women's Health Research/Child Maltreatment	Research Program	100% Department Overhead Funds	104 Market Street	11/30/2018	5,840	\$ 151,793.58	\$ 26.00	One 5 yr w/3%
35	FIGCH, LLC	Health Affairs	Carolina Population Center	Research Program	100 F & A	308 West Rosemary Street	11/30/2018	5,333	\$ 138,615.61	\$ 26.00	One 5 yr w/3% inc
36	Madison Partners, LLC	University Administration	Center for Public Service	University Support	100% F & A	205 Wilson Street	7/31/2019	1,955	\$ 40,859.10	\$ 20.90	Two 1 yr w/2% inc
37	Europa Center, LLC	Health Affairs	Institute for the Environment & Galapagos Studies	University Support	100% Department Overhead Funds	100 Europa Center Drive	1/31/2020	2,605	\$ 50,797.50	\$ 19.50	None
38	Carr Mill Mall Limited Partnership	Health Affairs	Lineberger Cancer Center (7,523 sq ft)	Research Programs	73.86 % Trust Funds 24.9% F & A Funds 1.24% C/Grant	101 E. Weaver Street	2/29/2020	10,185	\$ 203,190.75	\$ 19.95	Two 2 yr w/ 2% inc
		Health Affairs	Scales (2,536 sq ft)								
		Health Affairs	SOM, Infectious Diseases (126 sf)								
39	* Skylak Investments, LLC	Academic Affairs	Public Policy (EPIC)	University Support	50 % State Funds 25% C/Grant 25% Dept. Overhead	103 Cloister Court	9/30/2020	2,800	\$ 47,600.00	\$ 17.00	One 5 yr w/ 2.5% inc
40	Cedar Plank, LLC	Health Affairs	SOM, CIDD	Research Program	100% Trust Funds	101 Renee Lynn Court	9/30/2020	17,824	\$ 470,081.04	\$ 26.37	Two 5 yr w 3% inc
41	* West Franklin Preservation Limited Partnership	Health Affairs	Carolina Population Center	Research Program	100% F & A	200 West Franklin Street	9/30/2020	2,979	\$ 74,475.00	\$ 25.00	None
42	* 137 E. Franklin, LP	University Administration	Provost Office, APO	University Support	100% Department Overhead Funds	137 East Franklin Street	10/31/2020	1,300	\$ 32,500.00	\$ 25.00	None
43	* E. Franklin Street Property, LLC	University Administration	Ackland Gift Store	University Support	100% F & A	109 East Franklin Street	12/31/2020	2,218	\$ 51,014.00	\$ 23.00	None
44	* 137 E. Franklin, LP	University Administration	Equal Opportunity & Compliance Office	University Support	100% F & A	137 East Franklin Street	12/31/2020	2,686	\$ 67,150.00	\$ 25.00	None
45	* Europa Center, LLC	Health Affairs	Eshelman School of Pharmacy	University Support	100% Department Overhead Funds	100 Europa Drive	1/14/2021	3,444	\$ 79,039.80	\$ 22.95	One 3 yr w/3% inc
46	Cedar Plank, LLC	Health Affairs	SOM, TEACCH	Research Program	100% Trust Funds	100 Renee Lynn Court	6/30/2022	16,701	\$ 415,179.20	\$ 24.86	Two 5 yr w 3% inc
47	Nin NC, LLC	Health Affairs	Frank Porter Graham Child Development Institute	Research Program	100% F & A	517 South Greensboro St.	12/31/2023	24,418	\$ 515,085.50	\$ 21.10	None
18	Nin NC, LLC	Health Affairs	Frank Porter Graham Child Development Institute	Research Program	100% F & A	521 South Greensboro St.	12/31/2023	23,532	\$ 496,395.77	\$ 21.10	None
49	* Board of Trustees of Endowment Fund	See Page 5	See Page 5	See Page 5	See Page 5	720, 725, 730 MLK Blvd	6/30/2025	63,471	\$ 1,364,626.50	\$ 21.50	None
50	Europa Center, LLC	University Administration	Office of Research Information Systems (ORIS)	Public Service	100% F & A	100 Europa Drive	6/30/2025	6,265	\$ 150,046.75	\$ 23.95	None

378,200 \$ 7,991,360.47 \$21.27

Notes:

1. Leases executed or renewed since last report(7/2015) are denoted by an asterisk (*). During this time, the amount of office space leased in Chapel Hill/Carrboro increased by 4,116 square feet. The average cost per square foot increased from \$21.21 per square foot to \$21.27 per square foot.
2. Amounts shown for Annual Rent and \$ Per Square Foot are based on amounts currently being paid. Most leases include provisions for annual rent increases based on a fixed schedule or increases in building operating costs.
3. Utilities and Janitorial are paid by the Lessor for all leases shown except for lease #13, #15, #31, #32, #34, #35 ,# 40, #46, #47 and #48
4. Janitorial services are provided at the Lessor's cost for all leases shown except #23, #24.
5. Item #20 reflects a six month rental rate.

The University of North Carolina at Chapel Hill
Office Space Leased to UNC-CH Outside of Chapel Hill/Carrboro
As of January 1, 2016

		Owner/Lessor	Lessee Division	Department	Lessee Classification	Lessee Source of Funding	Location	Lease End Date	Building Sq Ft	Annual Rent	\$ Per Sq ft
1		The Raleigh Building	Health Affairs	School of Social Work	Research Program	100% Contracts & Grants	Raleigh	Mth to Mth	320	\$ 1,050.00	\$ 13.13
2		Partnership For Children of Cumberland Co.	Health Affairs	SOM, Fayetteville TEACCH Program	Clinical Program	100% State Funds	Fayetteville	2/28/2016	786	\$ 12,576.00	\$ 16.00
3		Wainwright Property Management, LLC	Health Affairs	SOM, Greenville TEACCH Program	Clinical Program	100% State Funds	Greenville	7/31/2016	2,800	\$ 30,282.00	\$ 10.82
4		31 College Place, LLC	Health Affairs	SOM, Asheville TEACCH Program	Clinical Program	100% State Funds	Asheville	1/31/2017	3,540	\$ 49,560.00	\$ 14.00
5		HKL Commercial, LLC c/o James Little Real Estate	Health Affairs	SOM, Thurston Arthritis Center	Clinical Program	100% Contracts & Grants	Smithfield	6/30/2017	2,776	\$ 33,312.00	\$ 12.00
6 *		Davis 54, LLC	University Administration	RENCI/Reach NC	University Support	In Kind Lease	Durham	6/30/2017	200	\$ 1.00	\$ -
7		Edgemont Tenant LLC	Academic Affairs	School of Journalism/Mass Communication	Academic Program	In Kind Lease	Durham	12/31/2017	167	\$ 1.00	\$ -
8		Abinto Corporation	Health Affairs	SOM, Wilmington TEACCH Program	Clinical Program	100% State Funds	Wilmington	1/31/2018	3,353	\$ 55,860.98	\$ 16.66
9		Abinto Corporation	Health Affairs	SOM, Wilmington TEACCH Program	Clinical Program	100% State Funds	Wilmington	1/31/2018	689	\$ 11,473.51	\$ 16.65
10		Beacon Ventures	Health Affairs	Hunt Institute	Research Program	100% State Funds	Durham	3/31/2018	4,527	\$ 111,364.20	\$ 24.60
11		Keystone 630 TT, LLC	Health Affairs	Institute of Medicine/Sheps	Research Program	50% Trust Funds 50% F & A	Durham	4/30/2018	4,328	\$ 97,762.76	\$ 22.59
12		Self-Help Ventures Fund	Health Affairs	SOM, Infectious Diseases	Clinical Program	100% State Funds	Durham	4/30/2018	1,472	\$ 30,229.28	\$ 20.54
13		Revolution Tenant, LLC	Health Affairs	SOM, Greensboro TEACCH Program	Clinical Program	100% State Funds	Greensboro	4/30/2018	3,800	\$ 53,372.52	\$ 14.05
14		Blue Ridge Plaza, Associates	Health Affairs	SOM, Infectious Diseases	Clinical Program	15% Contracts & Grants 85% Dept. Overhead	Raleigh	7/31/2018	1,827	\$ 38,117.08	\$ 20.86
15		Fortune's Ridge Associates	Health Affairs	SOM. CCCDP/CASTLE	Clinical Program	70% Foundation Funds 30% Trust Funds	Durham	12/31/2019	6,329	\$ 90,378.12	\$ 14.28
16		Charlotte East, LLC	Health Affairs	SOM, Charlotte TEACCH Program	Clinical Program	25% State Funds 50% Trust Funds 25% Clinical Funds	Charlotte	4/30/2020	4,279	\$ 68,464.00	\$ 16.00
17 *		Property Reserve, Inc.	Health Affairs	SOM, Hemophilia Treatment Center Pharmacy Program	Clinical Program	100% Trust Funds	Durham	7/31/2022	1,973	\$ 43,307.35	\$ 21.95
18 *		Property Reserve, Inc.	Health Affairs	SOM, Hemophilia and Thrombosis Center	Clinical Program	100% Trust Funds	Durham	7/31/2022	5,106	\$ 112,076.70	\$ 21.95

NOTES:

1. Leases executed or renewed since the last report (7/2015) are denoted with an asterisk (*). During this time, the amount of sq ft outside Chapel Hill/Carrboro increased by 7,279 sq. feet. The average cost per square foot increased from \$16.50 per sq. foot. to \$17.26 per sq. foot and represents a 17.76 % increase in leased square feet since last lease report in July, 2015.
2. Amounts shown for Annual Rent and \$ Per Square Foot are based on amounts currently being paid. Most leases include a provision for annual rent increases based on a fixed schedule or increases in building operating costs.
3. Utilities and janitorial services are provided by the Lessor for all leases except #3, #8, and #9.
4. Janitorial services not included in #15.

The University of North Carolina at Chapel Hill
Endowment Owned Buildings on MLK Jr. Blvd. Office Space Leased to UNC-CH
As of January 1, 2016

Lessor	Lessee Division	Lessee Department (Program)	Lessee Classification	Lessee Source of Funds	Square Feet	Annual Rent	\$ Per Square Ft
Endowment Fund	Health Affairs	Office of Human Research Ethics	Research Program	100% F & A	5,162	\$ 110,983.00	\$ 21.50
Endowment Fund	Health Affairs	Office of Clinical Trials	Research Program	100% F & A	4,188	\$ 90,042.00	\$ 21.50
Endowment Fund	Health Affairs	School of Public Health (Biostatistics Dept, Survey Res. Unit)	Research Program	100% F & A	5,811	\$ 124,936.50	\$ 21.50
Endowment Fund	Health Affairs	Cecil G. Sheps Center For Health Services Research	Research Program	100% F & A	34,777	\$ 747,705.50	\$ 21.50
Endowment Fund	Health Affairs	Highway Safety Research Center	Research Program	85% F & A 15% Trust Funds	13,533	\$ 290,959.50	\$ 21.50
Total 720, 725, 730 Martin Luther King Jr. Blvd					63,471	\$1,364,626.50	\$ 21.50

The University of North Carolina at Chapel Hill
Miscellaneous Leases to the University
As of January 1, 2016

	Owner/Lessor	Lessee Division	Department	Type	Location	Lease End Date	Sq Ft or Acres	Annual Rent
1	Carolina Telephone and Telegraph Company	University Admin	WUNC Radio	Tower & Roof Top	Dare County (See Note 1)	Mth-to-Mth	0	\$ -
2	Sunstone Apartments, LLC	Health Affairs	Playmaker Repertory Company	Apartments	Carrboro (See Note 2)	5/15/2016	1,664 sq. ft.	\$ 24,910.98
3	Loretta Malcolm	Health Affairs	SPH, Environmental Sciences & Engineering	Land	Chatham	6/30/2016	2 acres	\$ 3,025.00
4	Sunstone Apartments, LLC	Health Affairs	OB-GYN, Horizon Program	Apartments	Carrboro (See Note 2)	7/31/2016	17.083 sq. ft.	\$ 214,644.00
5	* Kingswood Apartments	Health Affairs	OB-GYN, Horizon Program	Apartments	Carrboro (See Note 2)	7/31/2016	10,287 sq. ft.	\$ 113,940.00
6	* Kingswood Apartments	Health Affairs	OB-GYN, Horizon Program	Apartments	Carrboro (See Note 2)	11/30/2016	2,388 sq. ft.	\$ 26,460.00
7	GTP Acquisition Partner II, LLC	University Admin	WUNC Radio	Tower & Roof Top	Edgecombe County (See Note 1)	12/31/2017	100 sq. ft.	\$ 19,761.61
8	Chapel Hill City Board of Education	Health Affairs	Frank Porter Graham Child Development Institute	Land	Chapel Hill	9/17/2019	10.81 acres	\$ -
9	Secretary of the Army	University Admin	University of North Carolina	Land	Kerr Lake (see Note 3)	12/31/2020	230 acres	\$ -
10	RDU International	Health Affairs	AHEC Facility	Land	RDU - Durham	7/31/2031	70,390 sq. ft.	\$ 8,448.00
								\$ 402,741.59

Notes:

* Leases executed or renewed since the last report (1/2015) are denoted with an asterisk (*).

1. Tower, rooftop and associated land space to locate FM broadcast antenna and transmitter.
2. Items 4,5 & 6: 35 individual apartment leases for the OB-Gyn, Horizon Program.
3. Item #2: Individual apartment leases for Playmaker Repertory Company- rent selected above is for a 9 month leases. These are fully furnished apartments.
4. Item #8: Use of space for picnics, boating, camping, swimming and nature studies or current and retired University employees, University Hospital employees and General Administration employees.

The University of North Carolina at Chapel Hill
Lease Summary Storage Space Leases
As of January 1, 2016

Owner/Lessor		Department	Storage Type	Lease End Date	Building Sq Ft	Annual Rent
1	Starpoint, Inc.	Highway Safety Research Center	Mini	4/30/2016	200	\$ 1,680.00
2	Starpoint, Inc.	OB-GYN. Horizon Program	Mini	6/30/2016	400	\$ 2,880.00
3	Starpoint, Inc.	Carolina Higher Education Opportunity Programs(CHEOP)	Mini	7/31/2016	120	\$ 1,740.00
4	Yarboro & Hessee Warehouses, LLC	Ackland Art	Bulk	7/31/2016	1,888	\$ 8,496.00
5	Starpoint, Inc.	Carolina Higher Education Opportunity Programs(CHEOP)	Mini	3/31/2018	300	\$ 3,600.00
6	* Starpoint, Inc.	School of Dentistry	Mini	6/30/2018	300	\$ 4,920.00
					3,208	\$ 23,316.00

Notes:

* Leases executed or renewed since the last report (7/15) are denoted with an asterisk (*).

The University of North Carolina at Chapel Hill
Summary of Lease Dispositions
As of January 1, 2016

	Location	Lessee's Name	Sq Ft	Monthly Rent	Annual Rent	Lease End Date
I. Rental Houses						
1	University Lake (Lake Warden's House)	OWASA	1,080	\$ -	\$ 1.00	Mth to Mth
2	Horace Williams House	Preservation Chapel Hill	2,600	\$ -	\$ 1.00	Mth to Mth
3	1450 Mason Farm Place, Chapel Hill	David Demers	3,196	\$ 1,450.00	\$ 17,400.00	3/31/2016
4	1303 Mason Farm Road, Chapel Hill	Lyneise Williams	2,314	\$ 1,550.00	\$ 18,600.00	4/30/2016
5	1307 Mason Farm Road, Chapel Hill	Eric McAfee	3,010	\$ 1,550.00	\$ 18,600.00	4/30/2016
6	12276 US Highway 15-501 North, Chapel Hill	Marquis & Phyllis Bright	1,300	\$ 1,250.00	\$ 15,000.00	4/30/2016
7	620 Park Place, Chapel Hill	Freddie Kiger	1,400	\$ 1,475.00	\$ 17,700.00	5/31/2016
8	2311 Homestead Road, Chapel Hill	Michael & Denise Lopez	2,306	\$ 1,500.00	\$ 16,200.00	5/31/2016
9	6627 Maynard Farm Road, Chapel Hill	Arthur Menius	1,846	\$ 1,350.00	\$ 18,000.00	5/31/2016
10	107 Chase Avenue, Chapel Hill	Harper Wilson	2,500	\$ 1,500.00	\$ 18,000.00	5/31/2016
11	109 Chase Ave, Chapel Hill	Vicky Lent	2,324	\$ 1,500.00	\$ 18,000.00	5/31/2016
12	114A Chase Avenue, Chapel Hill	Kyle Driggers	1,100	\$ 1,150.00	\$ 13,800.00	7/31/2016
	114B Chase Avenue, Chapel Hill	Daniel Dunn	780	\$ 700.00	\$ 8,400.00	12/31/2016
13	1301 Mason Farm Road, Chapel Hill	Mardi Magoo	2,609	\$ 1,500.00	\$ 18,000.00	3/31/2017
14	1506 Mason Farm Road	Barbara Whitman	3,200	\$ 1,650.00	\$ 19,800.00	4/30/2017
15	6703 Maynard Farm Road, Chapel Hill	David Nichols	3,461	\$ 1,450.00	\$ 17,400.00	4/30/2017
16	301 Chase Avenue, Chapel Hill	Stephen Seiberling	1,940	\$ 1,275.00	\$ 15,300.00	5/31/2017
17	1500 Mason Farm Road, Chapel Hill	Jeremy & Guenieve Moulton	2,429	\$ 1,500.00	\$ 18,000.00	5/31/2017
18	1309 Homestead Road, Chapel Hill	Kelly Glosson	1,649	\$ 1,550.00	\$ 18,600.00	5/31/2017
19	307 W Cameron Ave, Chapel Hill	Andrew Miller	2,936	\$ 2,200.00	\$ 26,400.00	5/31/2017
20	218 Wilson Street, Chapel Hill	Steve Dobbins	1,500	\$ 1,350.00	\$ 16,200.00	7/31/2017
21	1404 Mason Farm Road, Chapel Hill	Brant Morefield & Ashley Musser	1,775	\$ 1,525.00	\$ 18,300.00	12/31/2017
			47,255	\$28,975.00	\$347,702.00	

	Location	Lessee's Name		Monthly Rent	Annual Rent	Lease End Date
II. Rental Buildings						
1	Mason Farm Road	Environmental Protection Agency	66,000	\$ 450,810.00	\$5,409,720.00	1/31/2025
2	Carolina Inn, Chapel Hill NC	BOT of the Endowment Fund	118,780	\$ -	\$ 1.00	6/30/2041
			184,780	\$ 450,810.00	\$5,409,721.00	

The University of North Carolina at Chapel Hill
Summary of Lease Dispositions
As of January 1, 2016

Location		Lessee's Name	Land Acreage	Annual Rent	Lease End Date
III. Land Leases					
1	Chapel Hill-Carrboro Bikeway	Town of Carrboro	0.70	\$ 1.00	mth-mth
2	University Lake	Orange Water and Sewer Authority	9.30	\$ -	8/8/2016
3	Park & Ride Lot near University Lake, Carrboro	Town of Chapel Hill	7.00	\$ 1.00	5/19/2019
4	Old Mason Farm Road	Family House at UNC Hospitals	5.83	\$ 1.00	5/31/2031
5	Smith Middle School Playing Fields	Orange Co., NC	16.60	\$ -	7/13/2031
6	UNC-CH campus -George Watts Hill Alumni Center	General Alumni Association	4.10	\$ 1.00	10/1/2034
7	101 Old Mason Farm Road	Ronald McDonald House of Chapel Hill	2.04	\$ 1.00	10/31/2035
8	208 Finley Golf Course Rd	Beta Xi Chapter, Kappa Psi Pharmaceutical Frat.	1.38	\$ -	8/5/2068
9	Barbee Chapel Rd	UNC Faculty Staff Recreation Association, Inc.	28.00	\$ -	7/7/2075
10	222 Finley Golf Course Rd.	North Carolina High School Athletic Association	1.45	\$ 1.00	5/13/2088
11	1411 Homestead Road, Chapel Hill	Town of Carrboro	1.68	\$ 1.00	11/30/2105
			78.08	\$ 7.00	

Location		Lessee's Name	Land Acreage	Annual Rent	Lease End Date
IV. Miscellaneous Leases					
1	Horace Williams Airport (South of Runway 27)	US Dept. of Trans., Federal Aviation Admin.	N/A	\$ -	9/30/2025

**STATUS OF CAPITAL IMPROVEMENT PROJECTS
THE UNIVERSITY OF NORTH CAROLINA AT CHAPEL HILL
FACILITIES SERVICES**

January 1, 2016

PROJECTS COMPLETED SINCE LAST REPORT (JULY 2015)

1. Craige Parking Deck Expansion (368)	\$35,711,600
2. Cogen Steam Tunnel Rehabilitation (495)	\$6,000,000
3. Upper Quad HVAC & Window Replacement (469)	\$6,450,000
4. Morehead Chemistry Building Roof Replacement (521)	\$515,326
5. Skipper Bowles Drive Repair & Resurface (448)	\$2,367,100
6. Craige Residence Hall Roof Replacement (554)	\$702,370
7. Murray Hall Renovation 3401 Lab Up-Fit (563)	\$550,000
8. Volleyball Suite Renovation, Woolen Gym (562)	\$1,047,000
Total	\$53,343,396

PROJECTS UNDER CONSTRUCTION:

Marsico Hall (formerly Imaging Research Building) (378) - \$245,543,902

(Funding - Appropriations)

Construction began June 2009 and beneficial occupancy was granted March 2014. Additional work was added to the lower basement levels extending the project completion to March 2016.

Rizzo Center Phase III (517) - \$36,000,000

(Funding - University Non-Appropriated)

Construction began October 2013 and is 85% complete. Project completion is expected in March 2016.

Lighting Upgrades for Parking Decks (464) - \$3,000,000

(Funding - University Non-Appropriated)

Construction began March 2015 and is 60% complete. Project completion is expected in May 2016.

Howell Hall Renovation (503) - \$12,300,000

(Funding - University Non-Appropriated/Repair&Renovation)

Construction began April 2015 and is 74% complete. Project completion is expected in March 2016.

Aycock Family Medicine Center Renovation (504) - \$4,177,108

(Funding - University Non-Appropriated)

Construction began January 2015 and is 65% complete. Project completion is expected in March 2016.

North Chiller Plant Capacity Upgrade (509) - \$4,500,000

(Funding - University Non-Appropriated)

Construction began February 2015 and is 95% complete. Project completion is expected in January 2016.

208 West Franklin Street Renovation (513) - \$3,932,598

(Funding - University Non-Appropriated)

Construction began March 2015 and is 94% complete. Project completion is expected in January 2016.

Rosenau Hall, Beard Hall and Old Clinic Building Roof Repairs and Fall Protection Installation (523) - \$743,000

(Funding - University Non-Appropriated)

Construction began June 2015 and is 80% complete. Project completion is expected in January 2016.

Thurston Bowles DLAM Renovation (558) - \$2,000,001

(Funding - University Non-Appropriated)

Construction began June 2015 and is 85% complete. Project completion is expected in January 2016.

Hill Hall Renovation (502) - \$19,670,000

(Funding - University Non-Appropriated, Gifts, and Repair&Renovation)

Construction began September 2015 and is 25% complete. Project completion is expected in October 2016.

Craige Residence Hall Elevator Repairs (555)- \$683,000

(Funding - University Non-Appropriated)

Construction began June 2015 and is 40% complete. Project completion is expected in March 2016.

GA Chiller Replacement (556)- \$1,072,707

(Funding – University Non-Appropriated)

Construction began July 2015 and is 96% complete. Project completion is expected in January 2016.

PROJECTS IN DESIGN:

Renovations to Mary Ellen Jones Building (501) - \$117,292,391

(Funding - University Non-Appropriated)

Project will be under construction in February 2016.

Improvement to Pedestrian, Bicycle & Vehicular Access to an Area between Franklin Street and Cameron Avenue , Porthole Alley (531) - \$2,850,000

(Funding - University Non-Appropriated)

Project is in construction documents phase.

Hamilton Hall Envelope Restoration (516) - \$1,500,000

(Funding - University Non-Appropriated)

Project is in construction documents phase.

Campus Way Finding Signage (514) - \$2,466,250

(Funding - University Non-Appropriated)

Project is in construction documents phase.

Campus Wide Sidewalk Improvements for Pit Area Walkway (538) - \$2,300,000

(Funding - University Non-Appropriated)

Project is in construction documents phase.

Cogeneration Environmental Site Investigation/Remediation (467) - \$750,000

(Funding - University Non-Appropriated)

Site investigation completed.

Davis Library Sprinklers and Fire Alarm Panel Replacement (551) - \$8,778,300

(Funding - University Non-Appropriated)

Project is in construction documents phase.

Kenan Lab - Energy Conservation (543) - \$1,000,000

(Funding - University Non-Appropriated)

Project is in construction documents phase.

Medical Biomolecular Research Building - Energy Conservation (553) - \$1,500,000

(Funding - University Non-Appropriated)

Project is in construction documents phase.

Power Generation & Chilled Water Plant Addition (547) - \$86,307,988**(Funding - University Non-Appropriated)**

Project is in design development phase.

HVAC Controls Upgrade - Energy Efficiency in Hanes, Mitchell, Swain and Steele Halls (542) - \$498,000**(Funding - State Appropriated 1292 Funds)**

Project is in construction documents phase.

Sitterson Bus Stop (541) - \$700,000**(Funding - University Non-Appropriated)**

Project is in construction documents phase.

Davis Library Roof Replacement West Sector (524) - \$305,000**(Funding - University Non-Appropriated)**

Project is in construction documents phase.

School of Dentistry Vacuum System Feasibility Study (578) - \$945,375**(Funding - University Non-Appropriated)**

Project is in design development phase.

Abernethy Hall Exterior Repairs (577) – \$450,000**(Funding - University Non-Appropriated)**

Project is in schematic design phase.

Department of Athletics Master Plan - \$200,000**(Funding - University Non-Appropriated)**

Project is in feasibility study phase.

Campus Master Plan - \$1,500,000 (570)**(Funding - University Non-Appropriated)**

Project is in pre-planning phase.

Davie Hall, Gardner Hall and Lineberger Cancer Center Elevator Repairs (582) - \$2,035,375**(Funding - University Non-Appropriated)**

Project is in feasibility study phase.

Ehringhaus, Hinton James and Carmichael Residence Halls Elevator Repairs – (568) \$1,900,000**(Funding - University Non-Appropriated)**

Project is in schematic design phase.

Ehringhaus, Hinton James and Carmichael Residence Halls Roof Replacement (569) - \$1,200,000**(Funding - University Non-Appropriated)**

Project is in schematic design phase.

Kenan Laboratory Building and Friday Center Roof Replacement (575) - \$1,505,860**(Funding - University Non-Appropriated)**

Project is in schematic design phase.

Knapp – Sanders Building Structural Repairs (576) - \$626,700**(Funding - University Non-Appropriated)**

Project is in construction document phase.

Morehead Chemistry Building HVAC Repairs (581) - \$682,500**(Funding - University Non-Appropriated)**

Project is in schematic design phase.

Murray Hall Renovation (559) - \$4,381,586**(Funding - University Non-Appropriated)**

Project is in construction document phase.

Phillips Hall Renovation (560)- \$1,797,000**(Funding - University Non-Appropriated)**

Project is in construction document phase.

Taylor Hall Fire Safety Improvements –(583) \$1,896,000**(Funding - University Non-Appropriated)**

Project is in feasibility study phase.

Emergency Declaration –Cheek/Clark Building Repairs (598) \$2,500,000**(Funding – University Non-Appropriated)**

Project is in feasibility study phase.

Medical Biomedical Research Building (MBRB)/Glaxo Building (584) - \$440,000**(Funding –University Non-Appropriated)**

Project is in bid phase.

Morehead Planetarium Building, Renovation of Classrooms, Offices (585) \$5,576,122**(Funding – Foundation/gifts)**

Awaiting approval to complete advance planning.

South Building Accessibility Improvements (586) \$319,700**(Funding: University Non-Appropriated)**

Project is in schematic design phase.

Battle Grove Regenerative Stormwater Conveyance (587) \$362,439**(Funding: University Non-Appropriated)**

Project will be under construction in January 2016.

Campus Safety Upgrade (588) \$4,750,000**(Funding: University Non-Appropriated)**

Project is in construction document phase.

Joan H. Gillings Auditorium (590) \$2,400,000**(Funding: Foundation and Endowment Income)**

Project is in schematic design phase.

Carolina Performing Arts at Carolina Square (123 W Franklin St) (592) \$4,000,000**(Funding: University Non-Appropriated)**

Project is in schematic design phase.

Children's Wonder Garden – NC Botanical Garden (593) \$765,839**(Funding: Foundation)**

Project is in schematic design phase.

McGavran Greenburg Animal Facility Improvements (595) \$1,949,968**(Funding – Grant (\$475,925 & University Non-Appropriated \$1,474,043)**

Project is in schematic design phase.

Lineberger Laboratory Renovations (596) \$495,000**(Funding University Non-Appropriated)**

Project is in construction document phase.

Hooker Fields Improvements (597) \$2,817,500

(Funding: University Non-Appropriated)

Project is in construction document phase.

Emergency Declaration – Cheek/Clark Building Repairs (598) \$4,020,000

(Funding: University Non-Appropriated)

Project is in schematic design phase.

Emergency Declaration – Van Hecke-Wettach Asbestos (601) \$350,000

(Funding: University Non-Appropriated)

Project is in schematic design phase.

CURE HIV Genetic Medicine Lab Renovation (602) \$799,200

(Funding: University Non-Appropriated)

Project is in construction documents phase.

Wilson Hall Annex (603) \$31,450,173

(Funding: University Non-Appropriated)

Project is in feasibility study phase.

Davie Hall Replacement (604) \$300,000

(Funding: University Non-Appropriated)

Project is in feasibility study phase.

Energy Services Utility Improvements in Academic Affairs Area (606) \$5,200,000

(Funding: University Non-Appropriated)

Project is in schematic design phase.

Ackland Arts Steam Replacement Project (612) \$480,000

(Funding: University Non-Appropriated)

Project is in schematic design phase.

SUMMARY OF MAJOR CAPITAL IMPROVEMENT ACTIVITY:

	<u>No. of Projects</u>	<u>Dollar Value</u>
Completed since 7/2015	08	\$ 53,343,396
Under Construction	12	\$ 333,622,316
In Design	46	\$ 324,057,991

HISTORICAL RECORD OF ACTIVITY:

<u>UNDER CONSTRUCTION</u>			<u>IN DESIGN</u>	
<u>Date</u>	<u>No. of Projects</u>	<u>Dollar Value</u>	<u>No. of Projects</u>	<u>Dollar Value</u>
Jun. 1984	10	\$ 66,858,320	11	\$ 14,956,950
Oct. 1984	13	\$ 77,924,820	16	\$ 28,455,450
Jun. 1985	15	\$ 75,753,450	18	\$ 57,302,500
Feb. 1986	13	\$ 67,684,000	30	\$190,990,620
Aug. 1986	11	\$ 61,093,000	25	\$191,213,620
Feb. 1987	14	\$ 39,924,000	27	\$183,061,220
Aug. 1987	13	\$ 26,817,520	25	\$210,316,100
Feb. 1988	12	\$ 42,354,520	26	\$222,477,900
Aug. 1988	14	\$ 61,721,870	34	\$254,328,430
Feb. 1989	15	\$157,882,770	40	\$168,321,630
Aug. 1989	20	\$158,003,370	29	\$170,550,730
Feb. 1990	18	\$153,331,770	34	\$174,785,500
Aug. 1990	14	\$161,479,980	29	\$165,398,600
Feb. 1991	10	\$191,489,780	26	\$147,486,500
Aug. 1991	11	\$202,564,380	28	\$132,000,800
Jan. 1992	9	\$193,656,480	31	\$123,015,800
Aug. 1992	16	\$196,850,380	25	\$132,470,400
Jan. 1993	15	\$178,790,400	27	\$137,062,000
July 1993	9	\$ 91,072,000	21	\$121,141,100
Jan. 1994	6	\$ 90,707,300	33	\$154,615,300
July 1994	15	\$101,999,300	28	\$147,370,700
Jan. 1995	13	\$ 66,320,700	52	\$175,385,600
July 1995	14	\$101,192,800	46	\$164,311,800
Jan. 1996	11	\$ 89,901,800	67	\$246,980,600
July 1996	17	\$ 92,701,100	61	\$299,168,300
Jan. 1997	19	\$131,072,400	63	\$282,872,700
July 1997	37	\$235,425,600	44	\$223,235,350
Jan. 1998	33	\$158,837,100	50	\$278,691,575
July 1998	36	\$183,705,300	43	\$285,946,375
Jan. 1999	26	\$153,298,200	42	\$314,955,275
July 1999	20	\$175,689,300	44	\$374,499,175
Jan. 2000	18	\$173,787,000	38	\$380,677,875
July 2000	20	\$171,732,100	44	\$402,994,475
Jan. 2001	20	\$265,311,575	56	\$255,342,400
July 2001	30	\$277,577,875	57	\$509,245,260
Jan. 2002	28	\$282,315,475	51	\$533,569,700
July 2002	25	\$297,186,000	51	\$533,569,700
Jan. 2003	18	\$246,220,200	52	\$700,266,390
July 2003	15	\$239,095,165	58	\$677,135,478
Jan. 2004	18	\$345,073,797	59	\$607,602,868
July 2004	24	\$435,597,765	61	\$837,011,823
Jan. 2005	32	\$540,484,649	77	\$997,282,175
July 2005	42	\$604,951,066	62	\$848,018,466
Jan. 2006	39	\$606,059,278	50	\$681,154,808
July 2006	36	\$753,387,157	55	\$697,916,808
Jan. 2007	39	\$493,513,761	60	\$729,086,980
July 2007	38	\$559,519,076	50	\$586,321,980
Jan. 2008	29	\$510,723,322	46	\$733,693,000
July 2008	27	\$570,815,114	51	\$715,328,000
Jan. 2009	25	\$429,973,546	47	\$906,213,000
July 2009	24	\$633,089,281	40	\$577,740,422
Jan. 2010	18	\$600,252,605	22	\$409,120,032
July 2010	18	\$618,429,022	32	\$539,620,032
Jan. 2011	15	\$605,745,206	30	\$474,190,032
July 2011	19	\$802,905,823	28	\$292,000,000
Jan. 2012	15	\$742,125,183	28	\$313,100,000
July 2012	17	\$655,508,823	31	\$309,600,000
Jan. 2013	12	\$550,585,206	34	\$389,726,000
July 2013	10	\$311,575,000	34	\$334,449,095
Jan. 2014	9	\$338,372,095	45	\$337,177,000
July 2014	14	\$349,553,714	42	\$376,843,592
Jan. 2015	19	\$377,846,839	50	\$423,639,550
July 2015	17	\$365,166,669	48	\$304,163,543
Jan. 2016	12	\$333,622,316	46	\$324,057,991



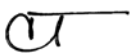
THE UNIVERSITY
of NORTH CAROLINA
at CHAPEL HILL

OFFICE OF THE EXECUTIVE
VICE CHANCELLOR AND PROVOST

MEMORANDUM

104 SOUTH BUILDING
CAMPUS BOX 3000
CHAPEL HILL, NC 27599-3000
T 919.962.3907
F 919.962.1593
provost.unc.edu

TO: James W. Dean, Jr.,
Executive Vice Chancellor and Provost

FROM: Carol Tresolini 
Vice Provost for Academic Initiatives and Chair, Centers & Institutes Review
Committee

DATE: October 12, 2015

RE: Approval to Decommission Certain Centers and Institutes

CAROL P. TRESOLINI
Vice Provost for Academic Initiatives
carol_tresolini@unc.edu

The Centers & Institutes Review Committee has received requests to decommission three centers in the Gillings School of Global Public Health. These requests were initiated by the dean to address units that either were no longer operational or did not meet the definition of “center” or “institute” as described in UNC General Administration regulations (UNC Policy Manual section 400.5[R]) and UNC-Chapel Hill policies. On behalf of the Committee, which has discussed these requests and come to consensus on them, I am now forwarding the Committee’s recommendations to you for consideration.

The Committee recommends that the following centers be decommissioned and removed from the official list of UNC-CH centers and institutes, for the reasons described below:

- *Nutrition Obesity Research Center.* This was a grant-supported center that no longer is funded or in operation.
- *Occupational Safety and Health Education and Research Center.* This center is funded by a single external research grant for which the funding agency uses “center” designation. It does not meet the GA or UNC-CH definition of “center” as an organized administrative unit.
- *UNC Center for Innovative Clinical Trials.* This is a unit that is more accurately called a laboratory. Its primary purpose and function is to facilitate advances in the design and analysis of clinical trials through collaborative methodological research projects between industry professionals and academic researchers in the Department of Biostatistics. If decommissioned, the SPH will give it a new name, the Innovative Clinical Trials Laboratory.

According to UNC-Chapel Hill policy and UNC General Administration regulations, decisions to discontinue or decommission a center or institute must be approved first by you, and then by the Chancellor and Board of Trustees. If approved, we then will notify the Office of Research and Graduate Education at UNC General Administration.

I would be happy to provide additional information as needed.

Thank you for considering these recommendations and forwarding your determinations to the Chancellor and Board of Trustees for their consideration.

Copy: Members of the Centers and Institutes Review Committee
Barbara Rimer, Dean, Gillings School of Global Public Health

The University of North Carolina at Chapel Hill

EXECUTIVE SUMMARY

Board of Trustees

January 28, 2016

ATTACHMENT L

Appendix A

No.	College/Division	Name	Dept./School	Current Rank	New Rank	Tenure Request Reason	Effective Date	Salary
Personnel Actions								
New Appointments without Tenure								
1	Health Affairs	Jimena Giudice	Cell Biology & Physiology	N/A	Assistant Professor		2/29/2016	\$100,000.00
2	Health Affairs	Corinna Sorenson	Eshelman School of Pharmacy	N/A	Assistant Professor		2/1/2016	\$113,000.00
3	Health Affairs	Taiseer Sulaiman	Operative Dentistry	Nominated Clinical Assistant Professor	Assistant Professor		2/1/2016	\$125,000.00
Addition of Joint Appointment without Tenure								
1	Health Affairs	Gaorav Gupta	Biochemistry & Biophysics	Assistant Professor	Assistant Professor		2/1/2016	\$200,000.00
Promotion to Full Professor								
1	Health Affairs	Wendy Brewster	OB-GYN	Associate Professor	Professor		3/1/2016	\$292,900.00
2	Health Affairs	Benjamin Chi	OB-GYN	Associate Professor	Professor		3/1/2016	\$214,000.00
3	Health Affairs	James Manning	Emergency Medicine	Associate Professor	Professor		12/18/2015	\$196,730.00
Reappointments to the same Rank								
1	Health Affairs	Enikő Rák	Allied Health Sciences	Assistant Professor	Assistant Professor		2/1/2017	\$81,130.80
2	Health Affairs	Qing Zhang	Pathology & Laboratory Medicine	Assistant Professor	Assistant Professor		2/1/2017	\$105,000.00
Designation/Reappointments to Departmental Chair								
1	Health Affairs	Michael Kosorok	Biostatistics	W. R. Kenan, Jr Distinguished Professor/Chair	Chair		7/1/2017	\$409,294.00
2	Health Affairs	Shou-Yih Lee	Health Policy & Management	Research Professor	Chair		9/1/2015	\$250,000.00
Designation/Reappointments to Distinguished Professorship								
1	Academic Affairs	Gina Chowa	School of Social Work	Associate Professor w/Tenure	Wallace Kuralt Early Career Professorship		1/1/2016	\$94,750.00
2	Academic Affairs	Marsha Collins	The Graduate School	Professor	Caroline H. & Thomas S. Royster Distinguished Professor		1/1/2016	\$116,992.00
3	Academic Affairs	Gary Cuddeback	School of Social Work	Associate Professor w/Tenure	Wallace Kuralt Early Career Professorship		1/1/2016	\$94,750.00
4	Academic Affairs	Trenette Goings	School of Social Work	Associate Professor w/Tenure	Wallace Kuralt Early Career Professorship		1/1/2016	\$90,043.00
Actions Conferring Tenure								
Promotion Conferring Tenure								
1	Academic Affairs	Ann Anderson	School of Government	Assistant Professor	Associate Professor	Promotion based on scholarly engagement; scholarly research and publication, teaching, and advising	2/1/2016	\$113,815.00
2	Academic Affairs	Michael Christian	Kenan-Flagler Business School	Assistant Professor	Associate Professor	Promotion based on excellence in research, teaching, and service	7/1/2016	\$181,000.00
3	Health Affairs	Robert Tarran	Cell Biology & Physiology	Associate Professor	Associate Professor	Promotion based on excellence in research	3/1/2016	\$151,590.00
4	Health Affairs	Stephanie Wheeler	Health Policy & Management	Assistant Professor	Associate Professor	Promotion based on excellence in research	5/1/2016	\$125,897.00
New Appointments Conferring Tenure								
0								
Addition of Joint Appointment Conferring Tenure								
1	Health Affairs	James Bear	Pharmacology	Professor	Professor	Addition of joint appointment based on excellence in research	1/29/2016	\$182,800.00
2	Health Affairs	George Stouffer	Biomedical Engineering	Professor	Professor	Addition of joint appointment based on excellence in clinical scholarship	2/26/2016	\$402,640.00
3	Health Affairs	Monte Willis	Pharmacology	Associate Professor	Associate Professor	Addition of joint appointment based on excellence in research	1/29/2016	\$163,024.00
Corrections								
0								

EXECUTIVE SUMMARY

Board of Trustees

July 14, 2014

No.	College/Division	Name	School	Department	Rank	Reason	Requested Amount of Increase **	Percent of Increase **	June 30 Salary	Current Salary	New Salary	Effective Date
Compensation Actions							* Available funding for each action has been confirmed by the appropriate Department and School/Division management officials to support the proposed salary increase. Upon implementation, specific funding sources are reviewed and approved at the Department level, as well as by the applicable University Central financial offices, including the University Budget Office and the Office of Sponsored Research for grant-funded salaries.					
							** Based on cumulative increase(s) to 6/30 salary					
1	Academic Affairs	Christopher Bingham	Business School		Associate Professor	Increase due to promotion to Professor	\$27,500	13.92%	\$197,500	\$217,250	\$225,000	1/1/2016
2	Academic Affairs	Vinayak Deshpande	Business School		Associate Professor	Increase due to promotion to Professor	\$58,000	31.87%	\$182,000	\$215,200	\$240,000	1/1/2016
3	Academic Affairs	Allen Hurlbert	Arts and Sciences	Biology	Assistant Professor	Increase due to promotion to Associate Professor	\$11,000	14.72%	\$74,746	\$80,746	\$85,746	1/1/2016
4	Health Affairs	Michael Hudgens	Public Health	Biostatistics	Professor	Increase due to promotion from Associate Professor to Professor	\$38,802	25.92%	\$149,698	\$158,680	\$188,500	2/1/2016
5	Academic Affairs	Camelia Kuhn	Business School		Associate Professor	Increase due to promotion to Associate Professor with Tenure	\$24,000	10.86%	\$221,000	\$243,100	\$245,000	1/1/2016
6	Academic Affairs	Alain Laederach	Arts and Sciences	Biology	Assistant Professor	Increase due to promotion to Associate Professor	\$15,900	14.38%	\$110,576	\$121,476	\$126,476	1/1/2016
7	Academic Affairs	Charles Mitchell	Arts and Sciences	Biology	Associate Professor	Increase due to promotion to Professor	\$11,500	13.34%	\$86,214	\$89,714	\$97,714	1/1/2016
8	Academic Affairs	Paige Ouimet	Business School		Assistant Professor	Increase due to promotion to Associate Professor with Tenure	\$40,000	19.51%	\$205,000	\$225,500	\$245,000	1/1/2016
9	Academic Affairs	Darin Padua	Arts and Sciences	Exercise and Sport Science	Professor/Chair	Increase due to additional duties in as department Chair	\$19,632	14.87%	\$132,000	\$146,632	\$151,632	1/1/2016
10	Academic Affairs	Tamlin Pavelsky	Arts and Sciences	Geological Sciences	Assistant Professor	Increase due to promotion to Associate Professor	\$7,650	10.03%	\$76,244	\$83,868	\$83,894	1/1/2016
11	Academic Affairs	Katya Pertsova	Arts and Sciences	Linguistics	Assistant Professor	Increase due to promotion to Associate Professor	\$7,608	12.19%	\$62,392	\$65,000	\$70,000	1/1/2016
12	Academic Affairs	Justin Sawon	Arts and Sciences	Mathematics	Assistant Professor	Increase due to promotion to Associate Professor	\$13,500	16.25%	\$83,086	\$91,586	\$96,586	1/1/2016
13	Health Affairs	Lisa Stoner	Dentistry	Prosthodontics	Clinical Assistant Professor	Increase due to retention counteroffer as Dr. Stoner is a finalist for a staff appointment at Durham VA Medical Center	\$19,999	16.71%	\$119,651	\$131,116	\$139,650	1/1/2016
14	Health Affairs	Daniel Westreich	Public Health	Epidemiology	Assistant Professor	Increase due to promotion to Associate Professor with Tenure	\$20,958	20.00%	\$104,790	\$104,790	\$125,748	3/1/2016
15												
16												
17												
18												
19												
20												
21												
22												
23												
24												
25												

No.	College/Division	Name	Department/School	Rank	Reason	Total Monetary Value of Non-Salary Compensation	Duration of Non-Salary Compensation	Effective Date	End Date
Non-Salary Compensation Actions									
0	N/A	N/A	N/A	N/A	N/A	N/A	N/A	N/A	NA

EXECUTIVE SUMMARY

Board of Trustees

July 14, 2014

No.	College/Division Name	Department/School	Rank	Description
For Information				
0	N/A	N/A	N/A	N/A

Compensation Actions

No	Last Name	First Name	College/Division	Department/School	Rank/Title	June 30 Salary	Proposed Salary	Requested Increase \$\$	Requested Increase %	Effective Date	Justification
1	Campbell	Jeff	University Libraries	University Library	Head, Infrastructure Management Services	\$ 70,287	\$ 90,000	\$ 19,713	28.05	1/1/2016	2a - Increase in job duties or responsibilities; includes reclassification of branch/role - This is a salary adjustment related to a permanent increase in job duties or responsibilities. The current duties include serving as the Head of Library Management Systems, managing the Integrated Library System (ILS) and EZProxy software packages, troubleshooting and resolving issues with that software, and chairing the ILS Coordinating Committee. The new additional duties will include serving as the Head of Infrastructure Management Services (IMS), managing four IT staff members, setting priorities and goals for IMS, leading the selection and implementation of complex computer systems for library operations and collections, overseeing the development of annual infrastructure budget requests, providing consultation on infrastructure-related projects and services, and representing the library on a variety of campus IT initiatives. The additional duties were previously part of a different position that will be abolished since the incumbent has retired; this consolidation will result in a net salary savings of \$82,287. A \$2,000 increase was granted effective July 2015 during the Annual Raise Process. There are no comparable positions within the work unit. The employee meets the education and experience requirements for this classification with a Master's degree in Library Science and 17 years and six months of related experience.
2	Kalbas	Brian	Athletics	Athletics-Women's Tennis	Head Women's Tennis Coach	\$ 100,045	\$ 120,000	\$ 19,955	19.95	1/1/2016	12 - Other - This proposed increase results from the conversion of an at-will appointment to a term contract with an annual salary of \$120,000; the agreement was approved by the Board of Trustees in June 2015. The employee was granted a \$10,005 increase effective July 2015 during the Annual Raise Process.
3	Levy	Jennifer	Athletics	Athletics-Women's Lacrosse	Head Women's Lacrosse Coach	\$ 97,056	\$ 110,000	\$ 12,944	13.34	1/1/2016	12 - Other - This proposed increase results from the conversion of an at-will appointment to a term contract with an annual salary of \$110,000; the agreement was approved by the Board of Trustees in June 2015. The employee was granted a \$9,706 increase effective July 2015 during the Annual Raise Process.

The University of North Carolina at Chapel Hill - EXECUTIVE SUMMARY (EPA Non-Faculty) - Board of Trustees - January 2016

4	Li	Kelin	UNC Eshelman School of Pharmacy	Chemical Biology and Medicinal Chemistry	Senior Research Associate	\$ 58,249	\$ 75,000	\$ 16,751	28.76	1/1/2016	2a - Increase in job duties or responsibilities; includes reclassification of branch/role - This proposed increase results from the position being reallocated to a higher-level classification. In the current position (Research Associate), the duties include conducting research in chemical synthesis and structure-activity relationship studies, as well as assisting the Principal Investigator in the preparation and submission of reports and publications related to the research. In the new role (Senior Research Associate), the duties will include designing, executing, and troubleshooting synthetic schemes for complex bioactive molecules; formulating research methods; providing suggestions and recommendations for improving the quality of research schemes; independently interpreting data and using results to drive additional experimental design; and reporting results in external, field-appropriate scientific meetings. The requested salary is commensurate with other similarly situated employees (who have an average salary of \$77,411) and creates no equity issues. The employee meets the education and experience requirements for this classification with a Ph.D. in Organic Chemistry and 16 years of related experience.
5	McClain	Erin	School of Medicine	Center for Maternal & Infant Health	Senior Research Associate	\$ 61,000	\$ 70,150	\$ 9,150	15.00	1/1/2016	2a - Increase in job duties or responsibilities; includes reclassification of branch/role - This proposed increase results from the position being reallocated to a higher-level classification. In the current position (Research Associate), the duties include conducting qualitative and quantitative data collection and analysis regarding maternal and child preconception and inter-conception health, reproductive life planning, and perinatal tobacco use cessation; providing clinical care; and providing training and technical assistance via several modalities. In the new role (Senior Research Associate), the duties will include managing both in-person and web-based training and technical assistance for public and private healthcare providers, as well as allied health professionals; developing, implementing, and evaluating public-health programs that focus on the translation of research into practice; and developing and implementing a fellowship program for college-age preconception peer educators. A \$6,039 increase was granted effective July 2015 during the Annual Raise Process. There are no comparable positions within the work unit. The requested salary results in a market index of 79%. The employee meets the education and experience requirements for this classification with a Master's degree in Maternal and Child Health and 10 years of related experience.
6	Nisbet	Peter	Academic Initiatives	Ackland Art Museum	EPA Non-Faculty/ Acting Director	\$ 141,050	\$ 143,100	\$ 2,050	1.45	1/1/2016	2b - Temporary adjustment related to an increase in job duties or responsibilities; salary will revert when temporary duties cease - This request is for the extension of a temporary increase of \$21,600 for additional duties through June 2016. The temporary increase was first approved in July 2014, then extended in April 2015 and again in October 2015. The search for a new permanent director has proceeded more slowly than anticipated due to a declined offer, and the interim period likely will continue until spring 2016. The temporary duties will continue to include providing overall strategic leadership to the Ackland Art Museum and managing its day-to-day operations. A \$2,050 increase was granted effective July 2015 during the Annual Raise Process. Once the position has been permanently filled, the temporary increase will be removed and the salary will revert.

The University of North Carolina at Chapel Hill - EXECUTIVE SUMMARY (EPA Non-Faculty) - Board of Trustees - January 2016

7	Wales	Jennifer	College of Arts & Sciences/Fine Arts and Humanities	PlayMakers Repertory	Associate Director for Diversity and Professional Development	\$ 64,200	\$ 81,500	\$ 17,300	26.95	1/1/2016	2b - Temporary adjustment related to an increase in job duties or responsibilities; salary will revert when temporary duties cease - This request is for the extension of a temporary increase of \$11,333 for additional duties through April 2016. The temporary increase was first approved in April 2015 for nine months. The temporary duties will continue to include serving as the interim Associate Artistic Director, coordinating casting for PlayMakers theater productions locally and in partnership with New York casting agencies, managing partnerships with UNC faculty members for programming related to PlayMakers productions and all other classroom outreach activities, and administering research and development for the expansion of the Teaching Artist Residency Program. A \$3,638 increase was granted effective July 2015 during the Annual Raise Process. Once the position is permanently filled, the temporary increase will be removed and the salary will revert.
9											
10											



THE UNIVERSITY
of NORTH CAROLINA
at CHAPEL HILL

ATTACHMENT M

CAROL L. FOLT
Chancellor

103 SOUTH BUILDING
CAMPUS BOX 9100
CHAPEL HILL, NC 27599

T 919.962.1365
F 919.962.1647
carol.folt@unc.edu

Mail Ballot

Board of Trustees

November 20, 2015

Chancellor Carol Folt submits for your review and approval the following salary adjustment recommendations resulting from the EPA employee raise process. According to General Administration regulations, any increase (regardless of amount) for any SAAO Tier I Vice Chancellor or Provost must be approved by the Board of Trustees. Therefore, we submit the attached spreadsheet for your review and vote. This mail ballot will be ratified as part of the Consent Agenda at the Full Board meeting on Thursday, January 28, 2015.

The undersigned votes as follows with recommendation to these proposed actions as presented by the Chancellor.

Approval of SAAO Tier I Vice Chancellor or Provost
Salary Increases

Approve

Disapprove

☐☐

Proposed Increase Information	Proposed % Increase
Winston Crisp, Vice Chancellor for Student Affairs	5.00%
Bubba Cunningham, Director of Athletics	10.00%
Joel Curran, Vice Chancellor for Communications and Public Affairs	5.00%
James Dean, Executive Vice Chancellor and Provost	4.00%
Barbara Entwisle, Vice Chancellor for Research	1.00%
Matthew Fajack, Vice Chancellor for Finance and Administration	1.00%
Chris Kielt, Vice Chancellor for ITS and CIO	3.00%
David Routh, Vice Chancellor for Development	7.00%
Felicia Washington, Vice Chancellor for Workforce Strategy, Equity & Engagement	5.00%

Signature: _____

Printed Name: _____

Date: _____

Please fax to TJ Scott at (919) 962-1647 or email at tj_scott@unc.edu

This mail ballot was approved by majority vote on November 23, 2015 by the following: Dwight Stone, Haywood Cochrane, Chuck Duckett, Lowry Caudill, Jeff Brown, Julia Grumbles, Kelly Hopkins, Allie Ray McCullen, Ed McMahan, Hari Nath, and Houston Summers.

**ARP Worksheet - Vice Chancellors and Provosts
FY 2015-2016**

Name	Title	Salary as of 6/30/2015	Current Base Salary	Supplement /Bonus	Total Salary of All Jobs	Proposed ARP Base Salary	% Change Based on ARP Action	Comments	Range Minimum	Range Maximum	Amount of Increase
CRISP, WINSTON B	VC Student Affairs (145000)	310,000.00	310,000.00	0.00	310,000.00	325,500.00	5.00%	Requires BOT approval	\$176,592.00	\$353,183.00	15,500.00
Cunningham, Bubba	Director of Athl	583,880.00	583,880.00	0.00	583,880.00	642,268.00	10.00%	Requires BOT approval	\$450,268.00	\$810,482.00	58,388.00
Curran, Joel Gregory	VC Communications & Pub Affairs (141000)	324,000.00	324,000.00	0.00	324,000.00	340,200.00	5.00%	Requires BOT approval	\$171,026.00	\$342,052.00	16,000.00
DEAN, JAMES W	Executive Chancellor and Provost (105000)	445,000.00	445,000.00	0.00	445,000.00	462,800.00	4.00%	Requires BOT approval	\$281,825.00	\$563,650.00	17,800.00
ENTWISLE, BARBARA	VC Research (143000)	318,270.00	318,270.00	20000.00	338,270.00	321,453.00	1.00%	Requires BOT approval	\$220,832.00	\$441,663.00	3,183.00
FAJACK, MATTHEW	VC Finance & Administration (107000)	343,000.00	343,000.00	0.00	343,000.00	346,430.00	1.00%	Requires BOT approval	\$218,532.00	\$437,065.00	3,430.00
KIELT, CHRISTOPHER L.	VC ITS and CIO (129000)	330,000.00	330,000.00	0.00	330,000.00	339,900.00	3.00%	Requires BOT approval	\$201,755.00	\$403,510.00	9,900.00
ROUTH, DAVID	VC Development (113000)	395,000.00	395,000.00	98750.00	493,750.00	422,650.00	7.00%	Requires BOT approval	\$272,431.00	\$544,863.00	27,650.00
Washington, Felicia A	VC, Workforce Strategy (999999)	343,000.00	343,000.00	0.00	343,000.00	360,150.00	5.00%	Requires BOT approval	\$217,854.00	\$435,708.00	17,150.00

ARP Worksheet - Vice Chancellor's Chancellor Direct Reports
FY 2015-2016

Name	Title	Salary as of 6/30/15	Current Base Salary	Supplement/ Bonus	Total Salary of All Jobs	Proposed ARP Base Salary	% Change Based on ARP Action	Comments	Range Minimum	Range Maximum	Amount of Increase
CRISP, WINSTON B	VC Student Affairs (145000)	310,000.00	310,000.00	0.00	310,000.00	325,500.00	5.00%	Requires BOT approval	\$176,592.00	\$353,183.00	15,500.00
Cunninghan, Bubba	Director of Athl	583,880.00	583,880.00	0.00	583,880.00	642,268.00	10.00%	Requires BOT approval	\$450,268.00	\$810,482.00	58,388.00
Curran, Joel Gregory	VC Communications & Pub Affairs (141000)	324,000.00	324,000.00	0.00	324,000.00	340,200.00	5.00%	Requires BOT approval	\$171,026.00	\$342,052.00	16,000.00
DEAN, JAMES W	Executive Chancellor and Provost (105000)	445,000.00	445,000.00	0.00	445,000.00	462,800.00	4.00%	Requires BOT approval	\$281,825.00	\$563,650.00	17,800.00
ENTWISLE, BARBARA	VC Research (143000)	318,270.00	318,270.00	20000.00	338,270.00	321,453.00	1.00%	Requires BOT approval	\$220,832.00	\$441,663.00	3,183.00
FAJACK, MATTHEW	VC Finance & Administration (107000)	343,000.00	343,000.00	0.00	343,000.00	349,860.00	2.00%	Requires BOT approval	\$218,532.00	\$437,065.00	6,860.00
KIELT, CHRISTOPHER L.	VC ITS and CIO (129000)	330,000.00	330,000.00	0.00	330,000.00	339,900.00	3.00%	Requires BOT approval	\$201,755.00	\$403,510.00	9,900.00
ROUTH, DAVID	VC Development (113000)	395,000.00	395,000.00	98750.00	493,750.00	422,650.00	7.00%	Requires BOT approval	\$272,431.00	\$544,863.00	27,650.00
Washington, Felicia A	VC, Workforce Strategy (999999)	343,000.00	343,000.00	0.00	343,000.00	360,150.00	5.00%	Requires BOT approval	\$217,854.00	\$435,708.00	17,150.00