

# **Board of Trustees**

**July 24, 2013**

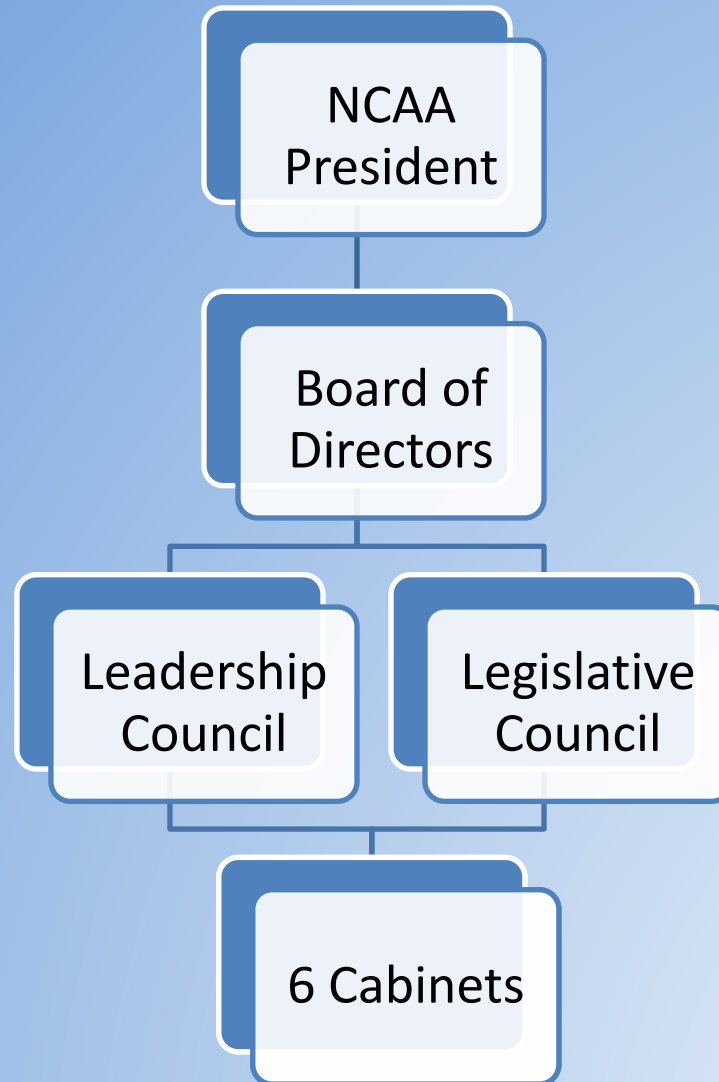


**The University of North Carolina at Chapel Hill**

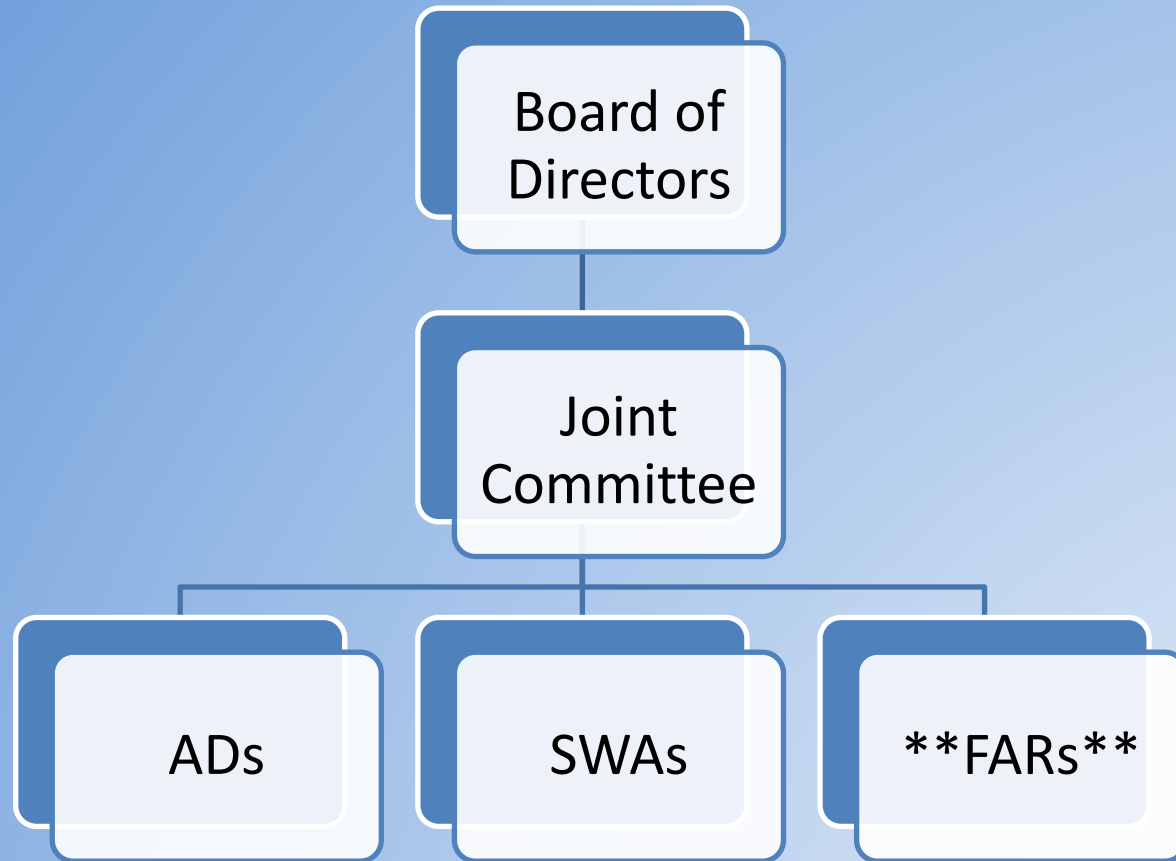
# TABLE OF CONTENTS

- ▶ **Governance**
  - ▶ **NCAA**
  - ▶ **ACC**
  - ▶ **UNC Athletics**
- ▶ **Strategic Plan**
  - ▶ **Mission**
  - ▶ **Values**
  - ▶ **Priorities**

# NCAA GOVERNANCE STRUCTURE



# ACC GOVERNANCE STRUCTURE



**\*\*FARs place votes for institutions\*\***

# ATLANTIC COAST CONFERENCE MEMBERSHIP

## Coastal

The University of North Carolina	
Duke University	
Georgia Tech	
University of Miami	
University of Pittsburgh	
University of Virginia	
Virginia Tech	

## Atlantic

Boston College	
Clemson University	
Florida State University	
North Carolina State University	
Wake Forest University	
Syracuse University	
University of Maryland*	

 University of Notre Dame 

\*Will be replaced by the University of Louisville in 2014

# DEPARTMENT OVERVIEW

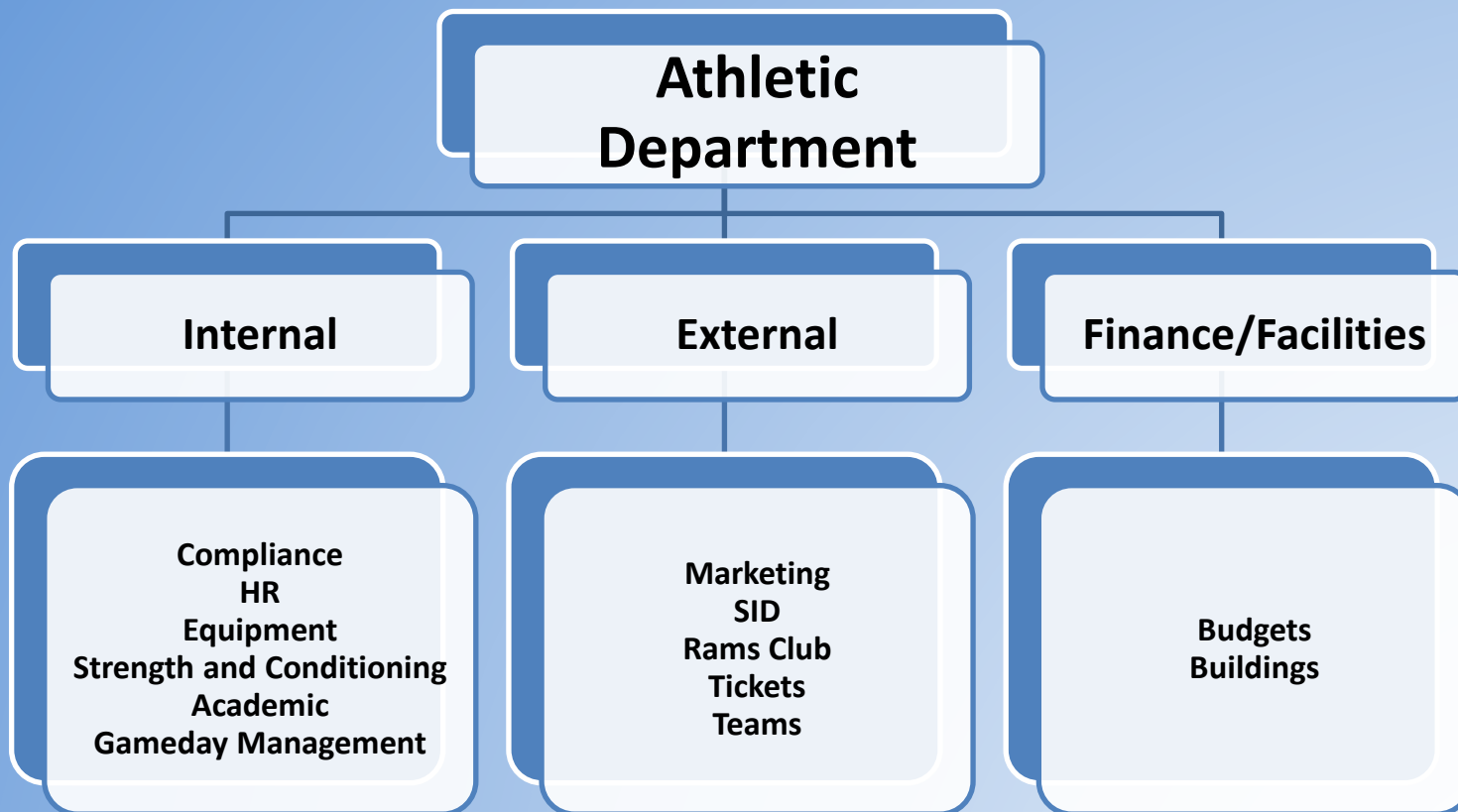
## Employment

- ▶ 255 Full-Time Employees
- ▶ 21 Head Coaches: 21
- ▶ 250-300 Students & Temps

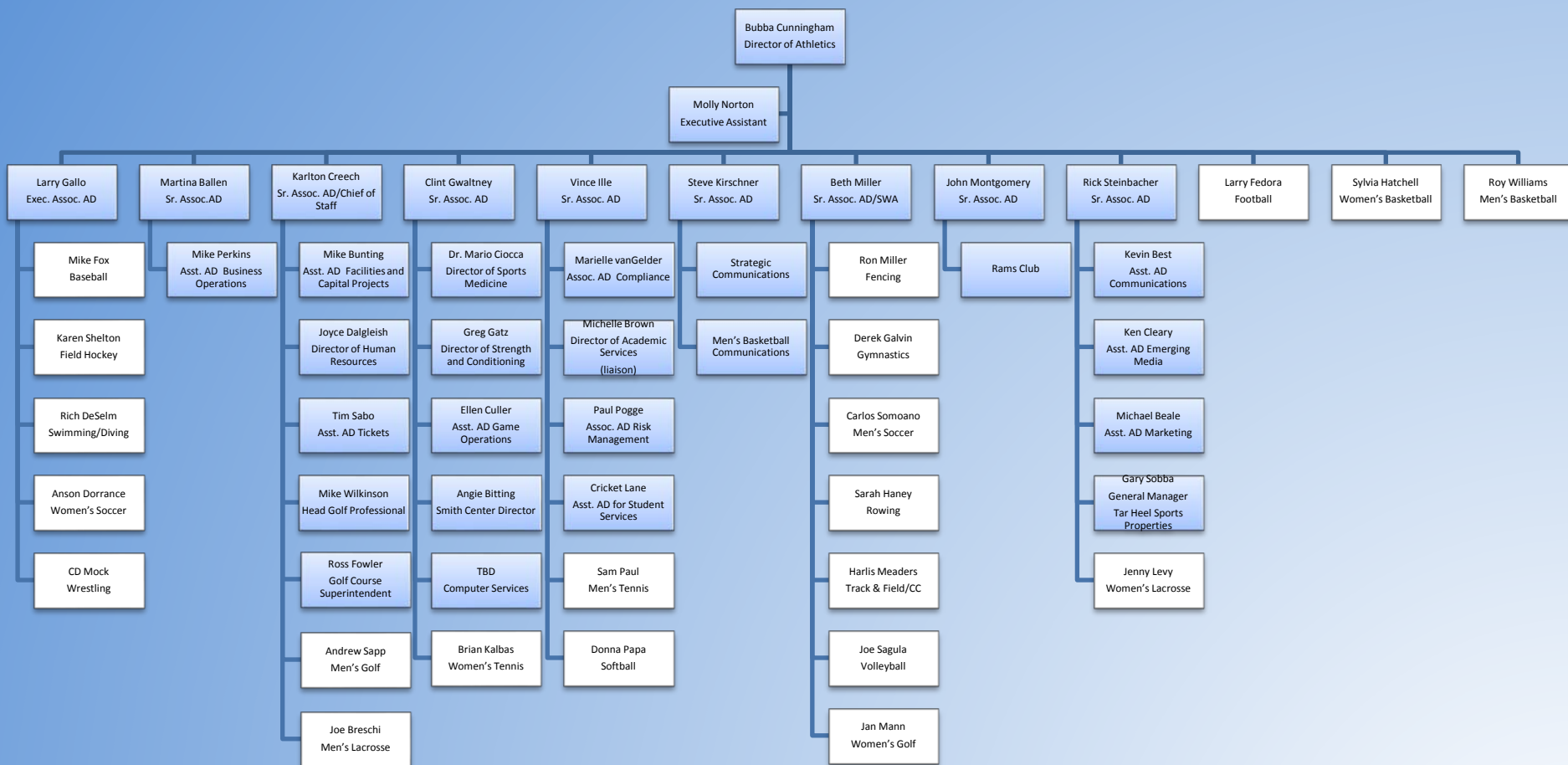
	Sports Programs	Student-Athletes
Men	13	442
Women	15	348
Total	28	790



# ATHLETIC DEPARTMENT GOVERNANCE STRUCTURE



# DEPARTMENT OF ATHLETICS ORGANIZATIONAL CHART





# STRATEGY STATEMENTS

**Mission:** **We educate and inspire through athletics.**

## **Values:**

**Responsibility** **Do what is right.**

**Innovation** **Find a better way.**

**Service** **Put others first.**

**Excellence** **Work Hard. Play smart. Win together.**

# STRATEGY STATEMENTS

## Priorities:

### Alignment

Align our operations to fulfill the mission of the university.

### Academic Achievement

Achieve a top 3 academic finish in the conference and a top 10 finish nationally in each sport.

### Athletic Performance

Perform to a top 3 athletic ranking in the conference and a top 10 ranking nationally in each sport.

### Administrative Engagement

Engage internal and external constituents to relentlessly pursue the resources and administrative structures necessary for success.

# ALIGNMENT

## LOCAL

- **UNC System**
- **Faculty Council**
- **Faculty Athletics Committee**
- **Faculty Athletics Representative**

## NATIONAL

- **NCAA Governance**
- **ACC**
- **Knight Commission**
- **Hunter Rawlings Discussion**

# STRATEGY STATEMENTS

## Priorities:

### Alignment

Align our operations to fulfill the mission of the university.

### Academic Achievement

Achieve a top 3 academic finish in the conference and a top 10 finish nationally in each sport.

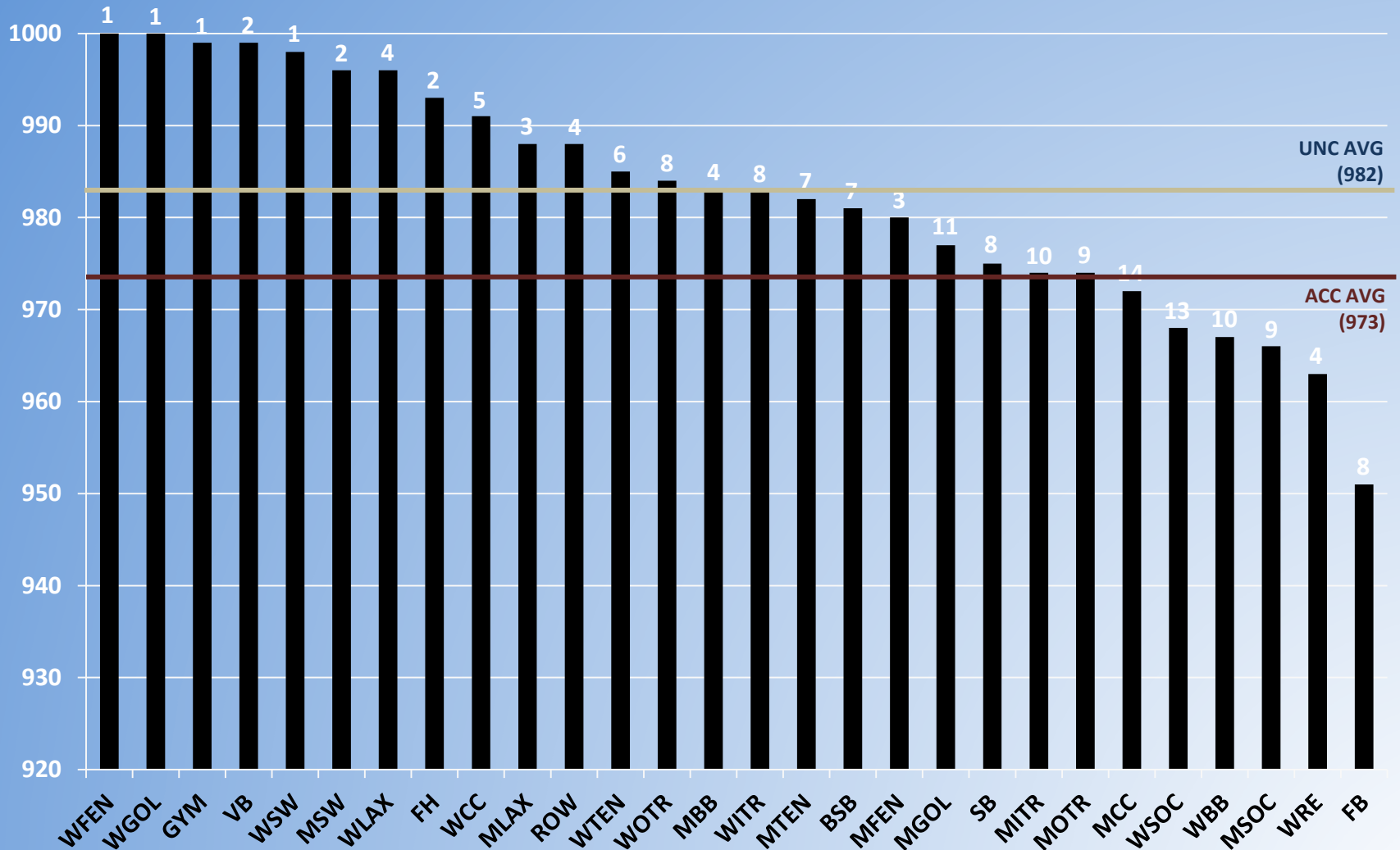
### Athletic Performance

Perform to a top 3 athletic ranking in the conference and a top 10 ranking nationally in each sport.

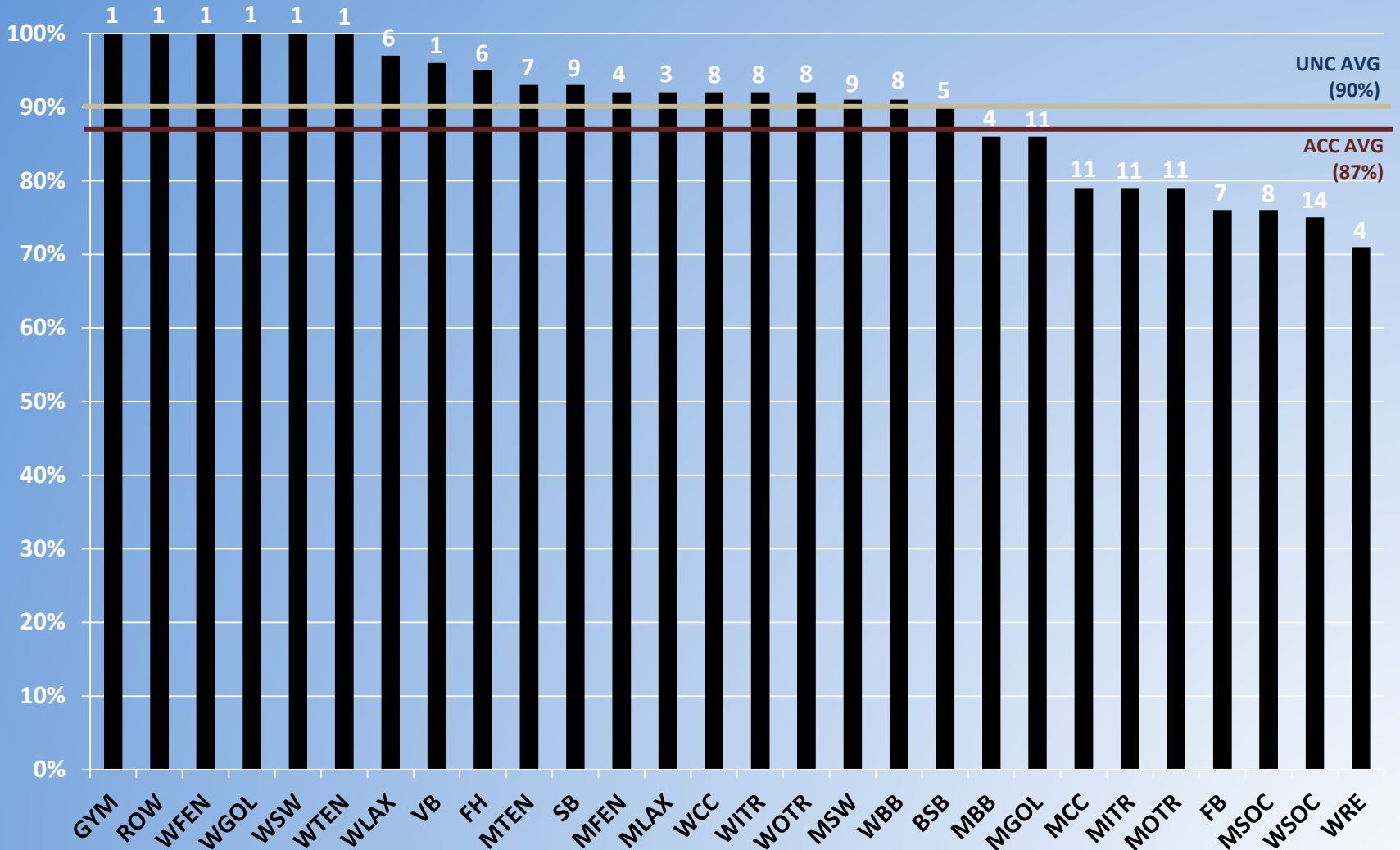
### Administrative Engagement

Engage internal and external constituents to relentlessly pursue the resources and administrative structures necessary for success.





# TOP 3 IN ACC APR IN 9 SPORTS




# TOP 3 ACC IN GSR IN 8 SPORTS



# TOP 25 – ACADEMIC PROGRESS RATE

Rank	Institution	Rate	
1	Notre Dame	994	
2	Duke	993	
3	Northwestern	992	
4	Georgetown	991	
5	Vanderbilt	990	
6	Boston College	989	
7	Stanford	987	
8	Wake Forest	987	
9	Villanova	987	
10	Marquette	986	
11	Michigan	984	
12	Texas	982	
13	North Carolina	982	

Rank	Institution	Rate	
14	Missouri	981	
15	Penn State	981	
16	St. John's	980	
17	DePaul	979	
18	Ohio State	978	
19	Illinois	978	
20	Wisconsin	978	
21	Virginia	978	
22	Syracuse	978	
23	Iowa	978	
24	Michigan State	978	
25	Miami	978	

- institutions from BCS conferences only
- average APR score per program over four-year period (2008-2011)

# STRATEGY STATEMENTS

## Priorities:

### Alignment

Align our operations to fulfill the mission of the university.

### Academic Achievement

Achieve a top 3 academic finish in the conference and a top 10 finish nationally in each sport.

### Athletic Performance

Perform to a top 3 athletic ranking in the conference and a top 10 ranking nationally in each sport.

### Administrative Engagement

Engage internal and external constituents to relentlessly pursue the resources and administrative structures necessary for success.

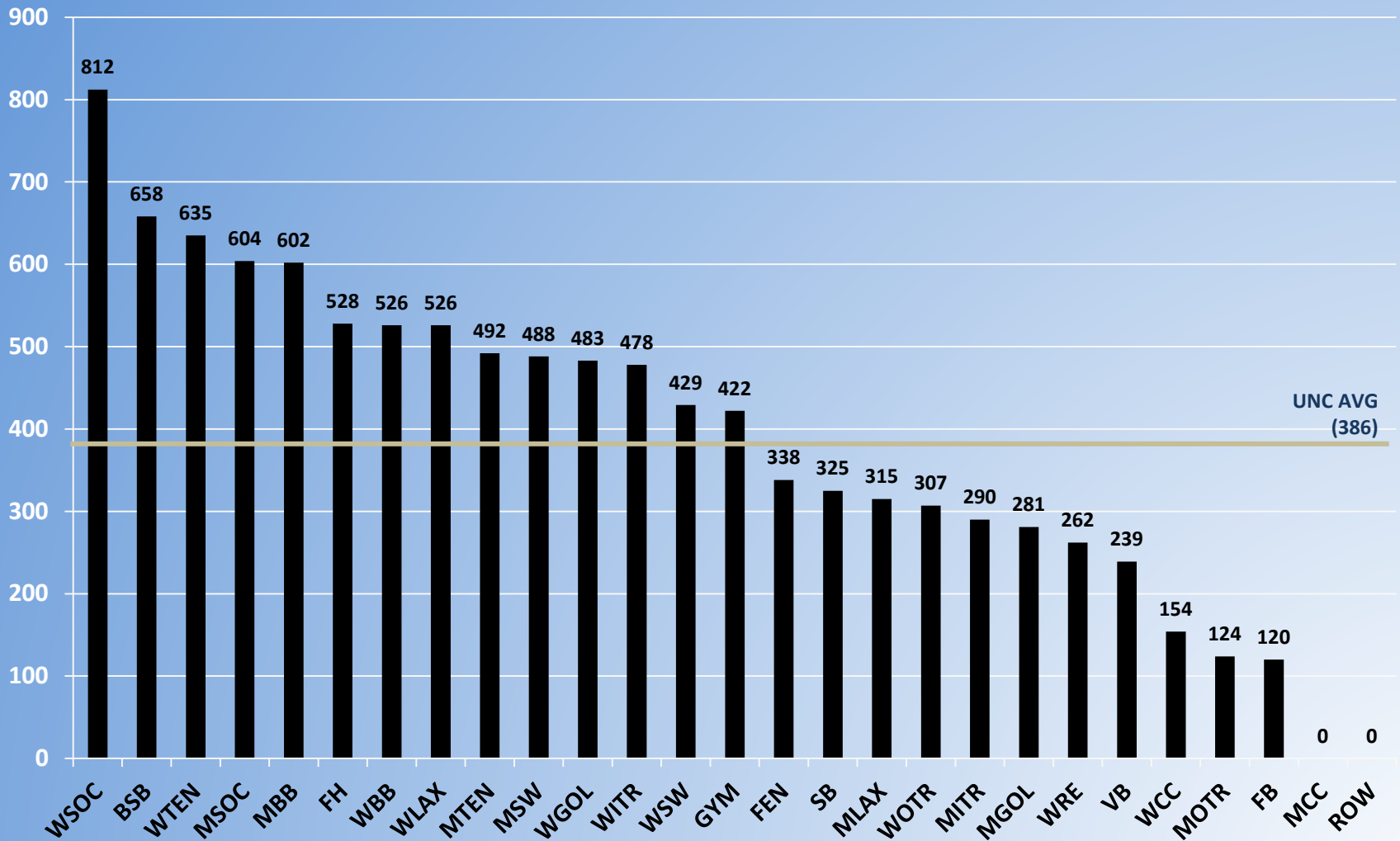


# TOP 25 – DIRECTORS' CUP

Rank	Institution	
1	Stanford	
2	Florida	
3	North Carolina	
4	Ohio State	
5	California	
6	Virginia	
7	Florida State	
8	UCLA	
9	Texas A&M	
10	Southern California	
11	Texas	
12	Duke	
13	Michigan	

Rank	Institution	
14	Penn State	
15	LSU	
16	Oklahoma	
17	Georgia	
18	Notre Dame	
19	Minnesota	
20	Washington	
21	Arizona	
22	Oregon	
23	Arizona State	
24	Tennessee	
25	Illinois	

# 14 SPORTS ABOVE AVERAGE IN DIRECTORS' CUP OVER 10 YEARS



# STRATEGY STATEMENTS

## Priorities:

### Alignment

Align our operations to fulfill the mission of the university.

### Academic Achievement

Achieve a top 3 academic finish in the conference and a top 10 finish nationally in each sport.

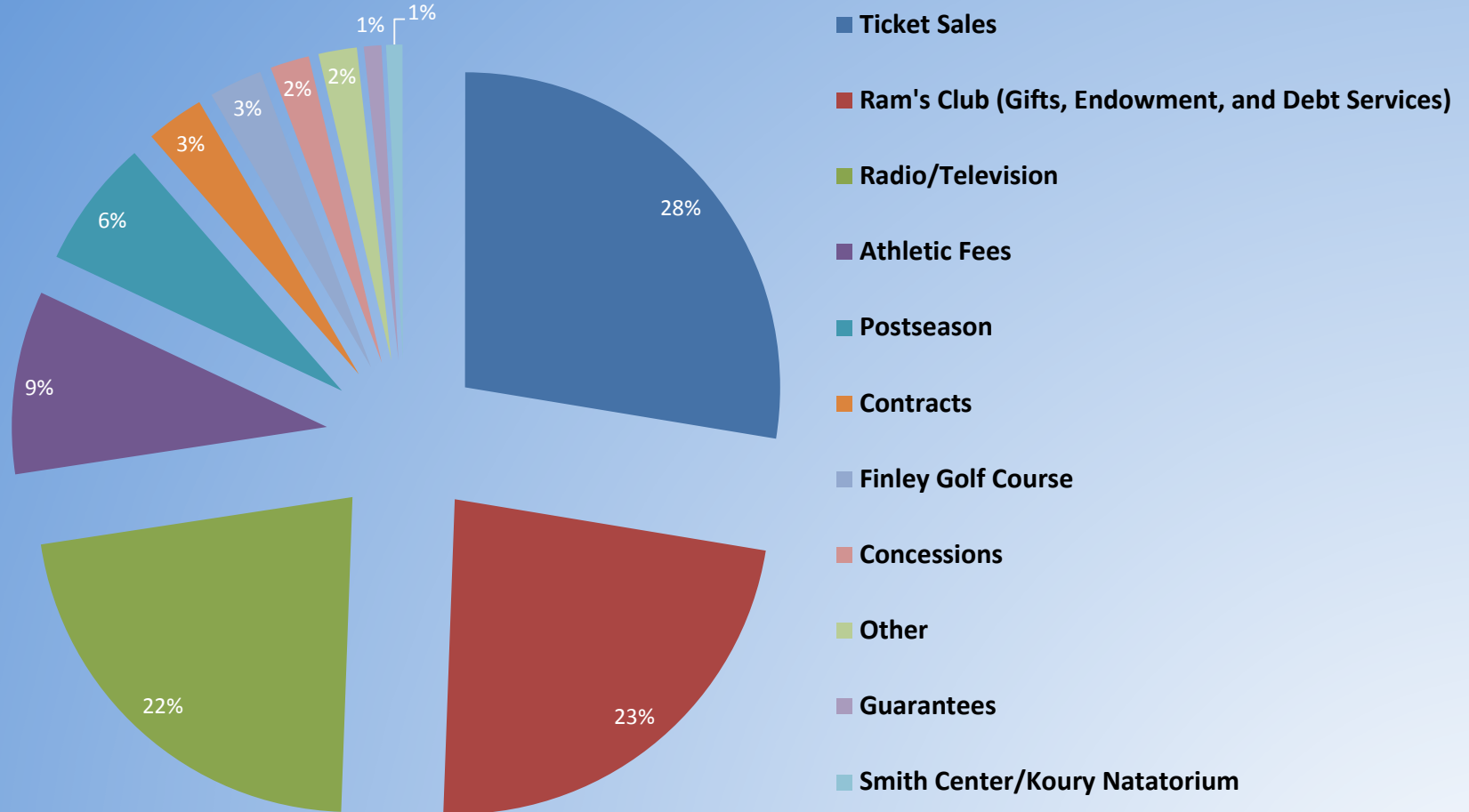
### Athletic Performance

Perform to a top 3 athletic ranking in the conference and a top 10 ranking nationally in each sport.

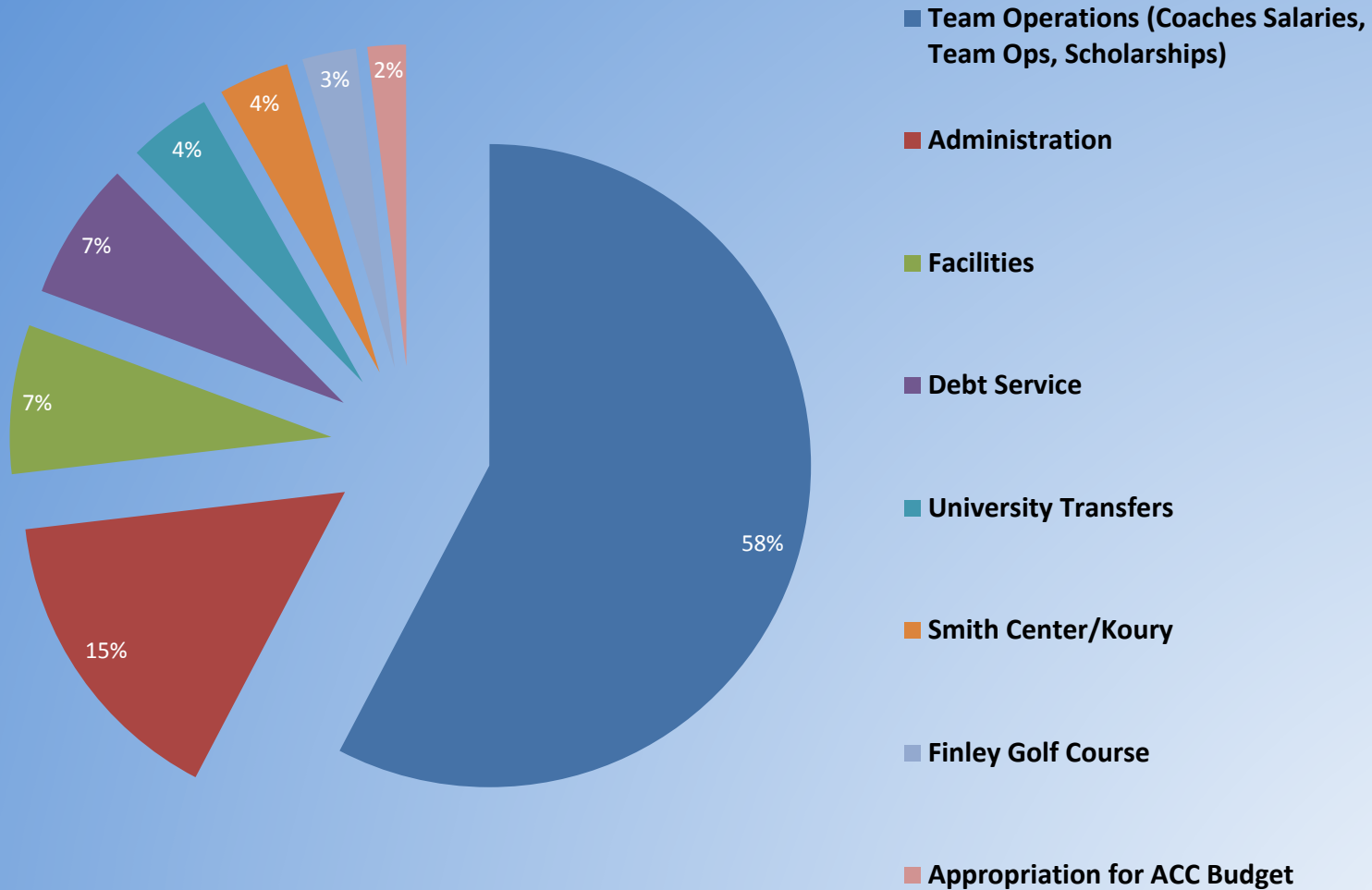
### Administrative Engagement

Engage internal and external constituents to relentlessly pursue the resources and administrative structures necessary for success.

# DEPARTMENT REVENUES



# DEPARTMENT EXPENSES



# SCHOLARSHIPS BY SPORT

Sport	NCAA Maximum	UNC Allotment
Baseball	11.7	11.7
Men's Basketball *	13	13
Women's Basketball *	15	15
Men's Fencing	4.5	0
Women's Fencing	5	0
Field Hockey	12	12
Football *	85	85
Men's Golf	4.5	4.5
Women's Golf	6	6
Gymnastics *	12	12
Men's Lacrosse	12.6	12.6
Women's Lacrosse	12	12
Rowing	20	4
Men's Soccer	9.9	9.9
Women's Soccer	14	14
Softball	12	12
Men's Swimming & Diving	9.9	9.9
Women's Swimming & Diving	14	14
Men's Tennis	4.5	4.5
Women's Tennis *	8	8
Men's Track / Cross Country	12.6	12.6
Women's Track / Cross Country	18	18
Volleyball *	12	12
Wrestling	9.9	9.9

\* Head Count Sport

# IN-STATE / OUT-OF-STATE SUMMARY BY SPORT

Sport	In-State	Out-of-State
Baseball	17	22
Men's Basketball	8	9
Women's Basketball	4	9
Men's Fencing	14	16
Women's Fencing	18	8
Field Hockey	2	25
Football	59	58
Men's Golf	6	4
Women's Golf	2	7
Gymnastics	4	10
Men's Lacrosse	6	44
Women's Lacrosse	1	31
Rowing	12 varsity / 30 novice	19 varsity / 13 novice
Men's Soccer	6	26
Women's Soccer	13	28
Softball	9	14
Men's Swimming & Diving	7	30
Women's Swimming & Diving	9	22
Men's Tennis	4	8
Women's Tennis	1	8
Men's Track / Cross Country	15	31
Women's Track / Cross Country	11	29
Volleyball	2	14
Wrestling	5	28

# PEER INSTITUTIONS BUDGET COMPARISON

University	Men's Sports	Women's Sports	Total Sports	Operating Expenses
Texas	9	11	20	\$133,686,815
Ohio State	19	20	39	\$122,286,869
Florida	9	12	21	\$107,157,831
Michigan	13	14	27	\$111,844,553
Wisconsin	12	12	24	\$95,623,345
North Carolina	13	15	28	\$74,312,602
Illinois	10	11	21	\$73,476,818
Virginia	12	13	25	\$72,400,342
Washington	10	11	21	\$67,900,835
UCLA	11	13	24	\$66,003,893
California	14	15	29	\$62,669,411



# CONFERENCE BUDGET COMPARISON


Conference	2008-2009			2010-2011		
	Athletic Expenses	Television Revenue	Bowl Revenue	Athletic Expenses	Television Revenue	Bowl Revenue
Big Ten	\$ 68.8	\$ 17.7	\$ 3.5	\$ 81.8	\$ 20.7	\$ 3.8
SEC	\$ 71.5	\$ 16.7	\$ 3.7	\$ 83.8	\$ 17.1	\$ 4.1
ACC	\$ 58.3	\$ 12.9	\$ 2.6	\$ 66.6	\$ 17.1	\$ 3.1
Pac-12	\$ 57.1	\$ 10.0	\$ 2.7	\$ 66.3	\$ 20.8	\$ 2.8
Big 12	\$ 63.7	\$ 8.3	\$ 2.8	\$ 74.6	\$ 15.0	\$ 3.9
Big East	\$ 48.6	\$ 2.5	\$ 1.5	\$ 48.5	\$ 2.5	\$ 3.2
MWC	\$ 26.7	\$ 1.3	\$ 1.4	\$ 38.9	\$ 1.3	\$ 2.1
C-USA	\$ 26.6	\$ 1.0	\$ 0.6	\$ 30.7	\$ 1.0	\$ 0.6

Dollar figures represent millions.

# TODAY'S CHALLENGES

- ▶ **Agents / Amateurism**
- ▶ **NCAA Governance**
- ▶ **NCAA Enforcement**
- ▶ **Governmental Intervention**
- ▶ **Pending Legal Cases**

# CAROLINA LEADS

The logo features a stylized 'C' and 'N' intertwined, with horizontal lines extending from the base of the 'C' and 'N'.

A STRATEGIC PLAN FOR CAROLINA ATHLETICS  
2012-2016