



THE UNIVERSITY
of NORTH CAROLINA
at CHAPEL HILL

Presentation to Board of Trustees
Finance and Infrastructure Committee
May 21, 2014

Campus Master Plan

- 2001 – Plan and Design Guidelines
- 2006 Update
- 2014 Update – in process

Carolina North

- Master Plan
- Landscape Framework



Master Plan Guiding Principles

Developed in 2001 and reaffirmed in 2006

Support Carolina's Mission

Export the Qualities of McCorkle
and Polk Places

Enhance The University's
Intellectual Climate

Support Local And Regional
Planning Principles



THE UNIVERSITY
of NORTH CAROLINA
at CHAPEL HILL

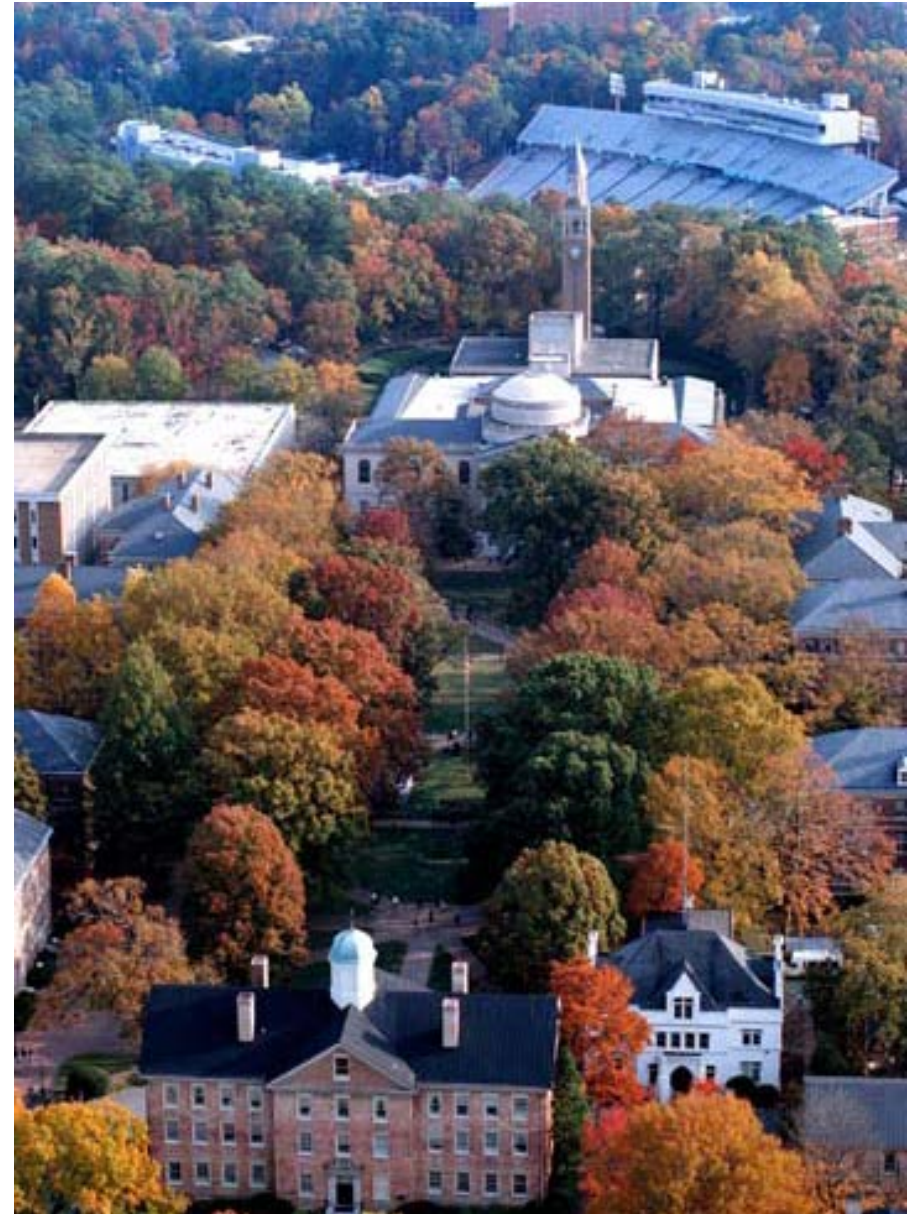


Responsible Capacity

What is the responsible capacity for buildings and open space within the character and culture of this institution?

How much can fit here and what will it look like?

What infrastructure is required?



THE UNIVERSITY
of NORTH CAROLINA
at CHAPEL HILL

2001 Campus Master Plan

Integrated planning guides campus development

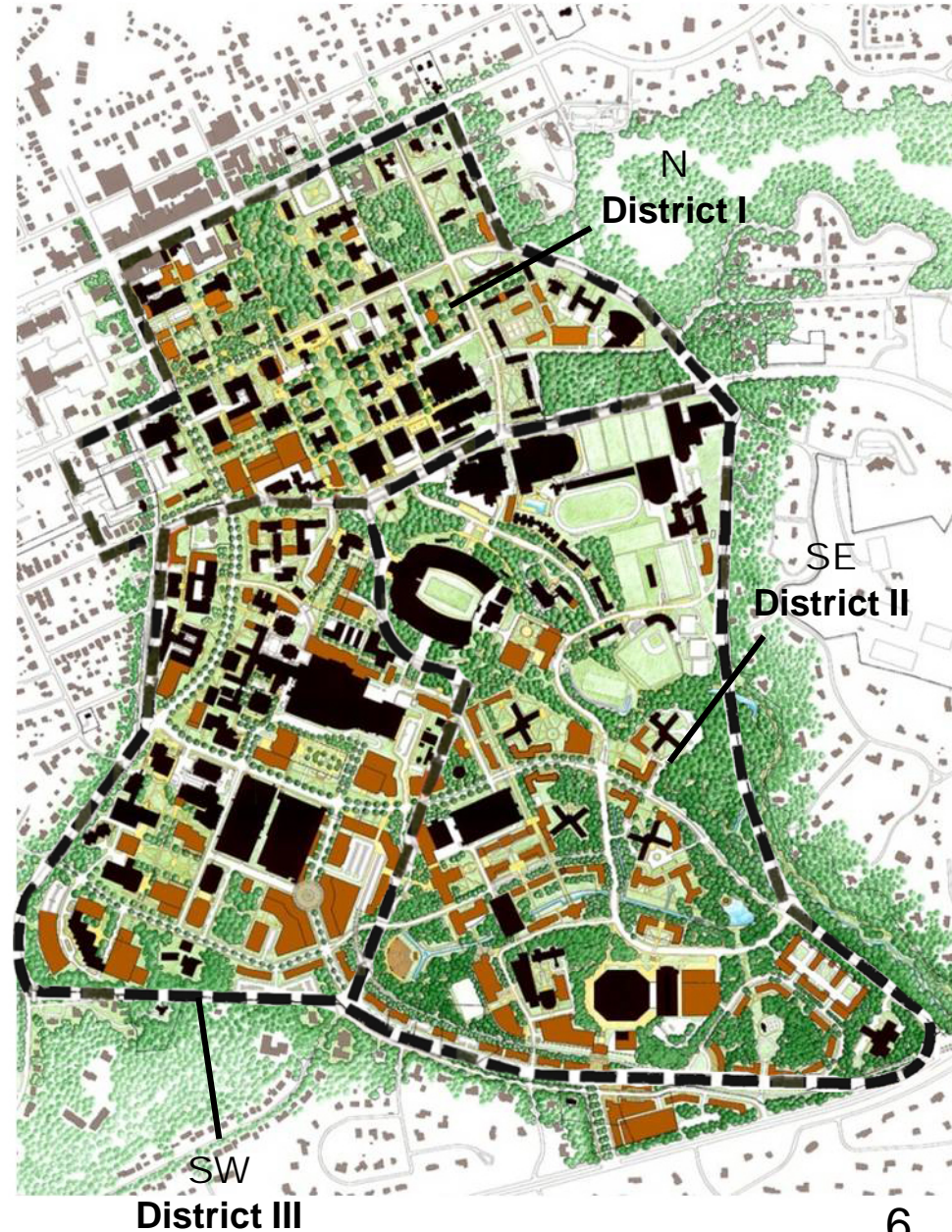
- Transportation and Parking
- Utilities Master Plan
- Environmental Master Plan
- Space Analysis
- Design Guidelines



THE UNIVERSITY
of NORTH CAROLINA
at CHAPEL HILL

Design Guidelines by District

- North Campus
 - Reinforce the existing fabric by carefully siting new buildings.
- South East Campus
 - Create a fabric of new buildings and open spaces around existing buildings.
- South West Campus
 - Humanize scale with new streetscapes, pedestrian network and open spaces.



Design Guidelines - North Campus

Reinforce the existing fabric by carefully siting new buildings.



Science Complex
Caudill Laboratories



THE UNIVERSITY
of NORTH CAROLINA
at CHAPEL HILL



Design Guidelines – South East Campus

Create a fabric of new buildings and open spaces around existing buildings that is memorable and connected to North Campus.



Student and Academic Services Buildings



THE UNIVERSITY
of NORTH CAROLINA
at CHAPEL HILL



Rams Head Plaza



Rams Head Plaza

Design Guidelines – South West Campus

Integrate building with consistent treatment of ground plane and landscape.



FedEx Global Education Center



THE UNIVERSITY
of NORTH CAROLINA
at CHAPEL HILL

Design Guidelines – South West Campus

Humanize scale with new streetscapes, pedestrian network and open spaces.



Michael Hooker Research Center



South Columbia Streetscape



2006 Campus Master Plan Update



2001 Plan – 11 M gsf available capacity



2006 Plan – 4.5 M gsf available capacity



2006 Campus Master Plan Update

- Redevelopment of remaining sites is complex and expensive
- Reinforce commitment to open space and stormwater management
- Reviewed parking strategy, utilities infrastructure and service areas
- Developed funding strategy for pedestrian safety improvements
- Limited opportunity for new initiatives. Approx. 1 million gsf “unclaimed” building sites

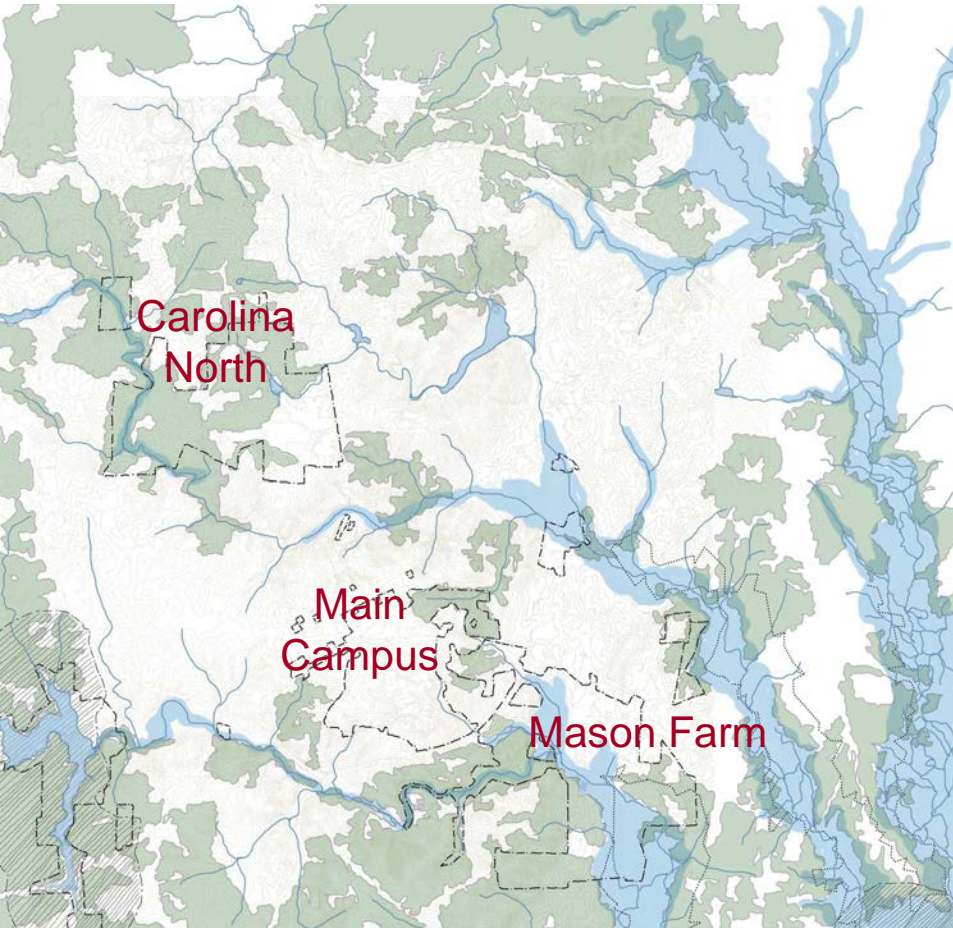


2007 University Master Plan

- Main campus is near capacity; can not fully accommodate planned growth
- Carolina North is a strategic opportunity
- Mason Farm capacity is underutilized but limited by phasing and transportation
- To fully realize the potential of the three sites:
 - Prioritize - principles, strategic definition, flexibility
 - Connect - programs, open space, pedestrians, transportation



2007 University Master Plan Guidelines



Main campus, Carolina North, and Mason Farm are individual locations that will be integrated to meet the University's needs.

Main campus is the heart of academic and residential life for students.

Some programs and functions are best served at Carolina North or Mason Farm.

Environmental stewardship will continue to guide sustainable development and operations.

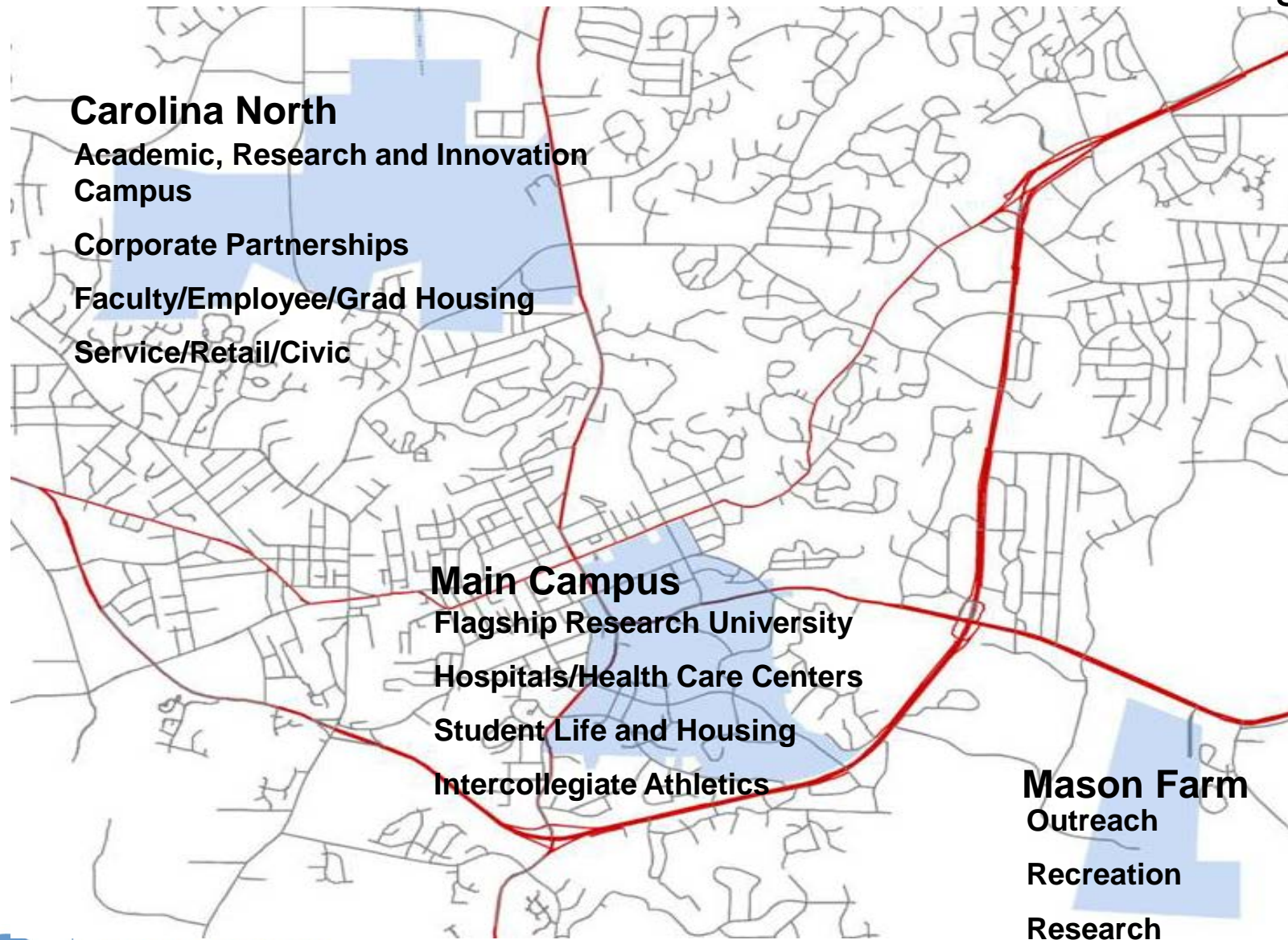
Transportation and infrastructure must be integrated between sites, locally, and regionally.

Mix of activity— academics, student life, recreation, and intercollegiate athletics – is a defining characteristic of main campus.



THE UNIVERSITY
of NORTH CAROLINA
at CHAPEL HILL

2007 Land Use Strategies



THE UNIVERSITY
of NORTH CAROLINA
at CHAPEL HILL

2014 Campus Master Plan Update



Focus on Southern Precinct

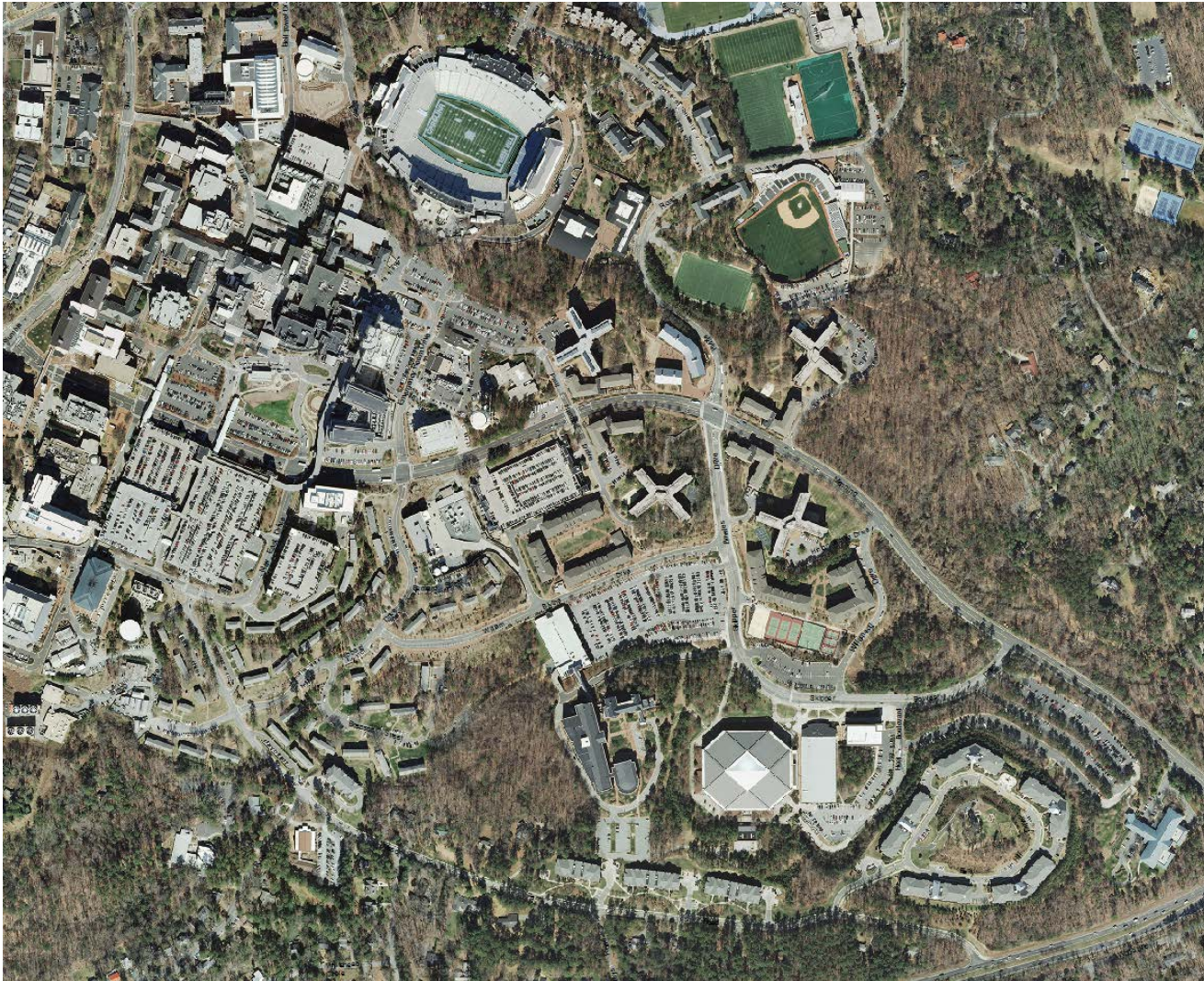
Planning Goals and Issues

- Revised TTA alignment
- Development Capacity
- Parking Requirements
- Infrastructure needs

Review of Refined Planning and options for joint programming.



2014 Campus Master Plan Update - Southern Precinct



THE UNIVERSITY
of NORTH CAROLINA
at CHAPEL HILL

Carolina North



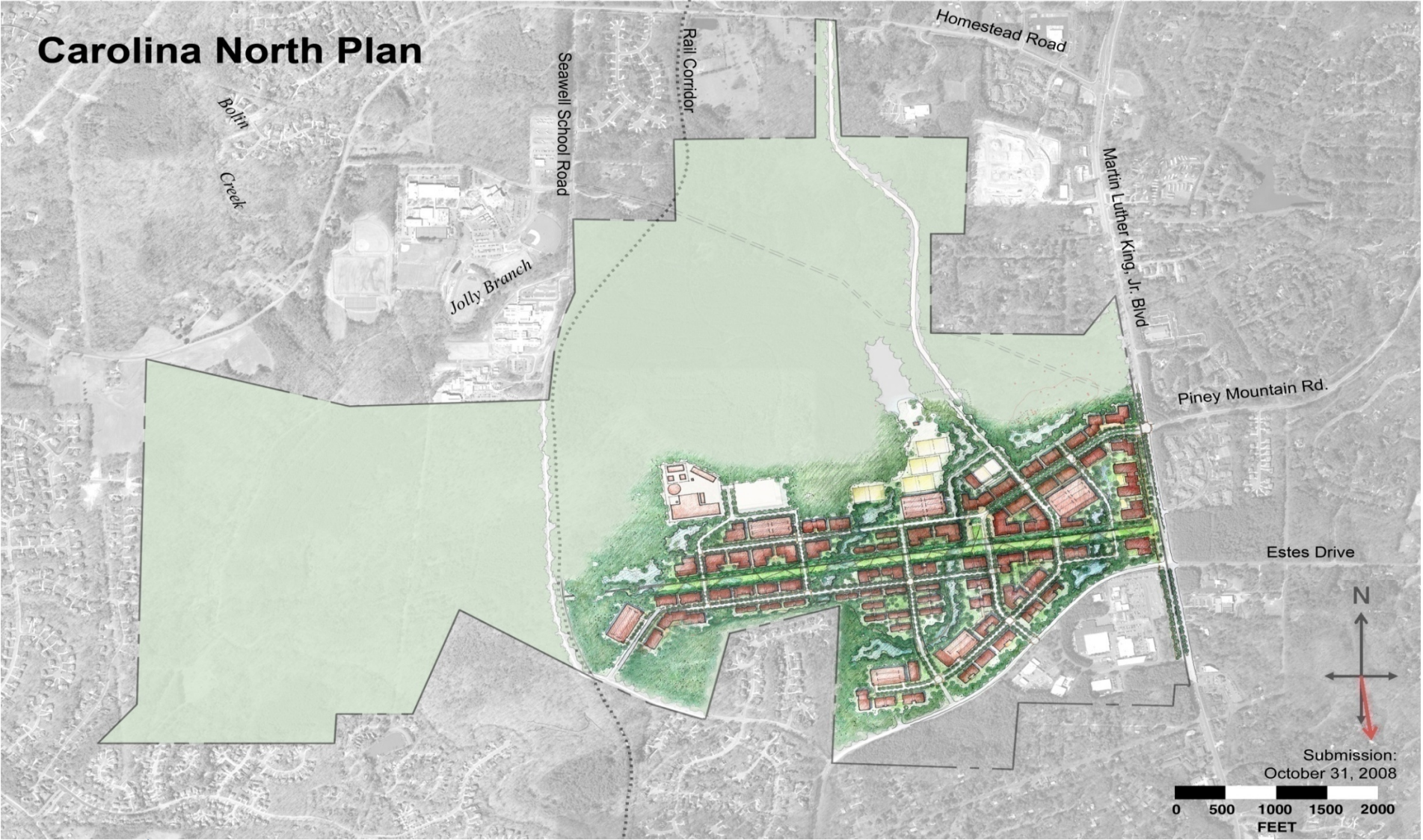
THE UNIVERSITY
of NORTH CAROLINA
at CHAPEL HILL

- What is Carolina North?
 - 947 acres of land owned by the University
- What will it be?
 - Mixed-use academic campus
 - Extension of the main campus
- What does it mean to the University?
 - Provide space for necessary growth
 - Enable new activities and relationships
 - Enhance research mission



50-year Development Plan

Carolina North Plan



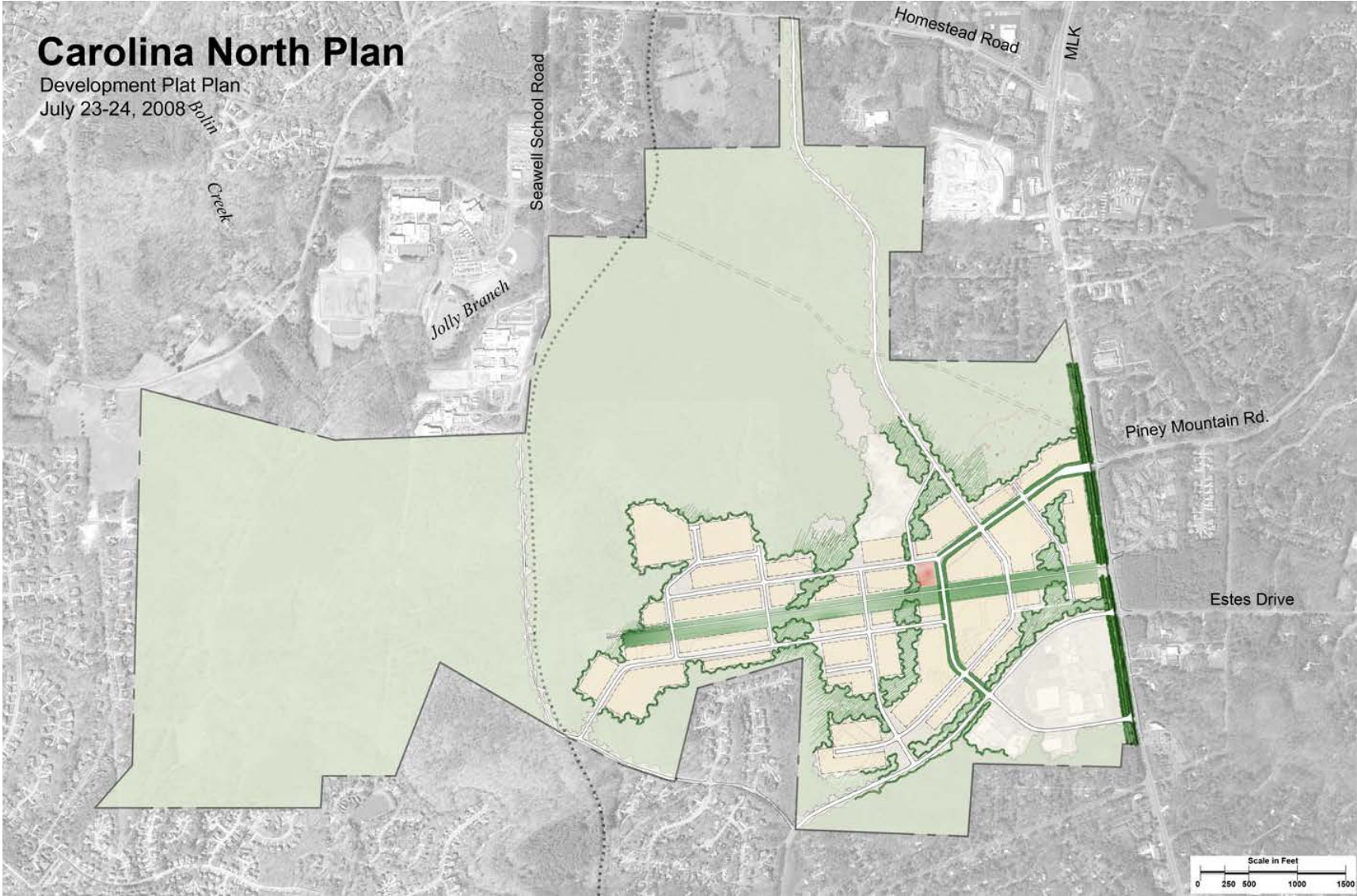
THE UNIVERSITY
of NORTH CAROLINA
at CHAPEL HILL

Carolina North Development Agreement Plan



THE UNIVERSITY
of NORTH CAROLINA
at CHAPEL HILL

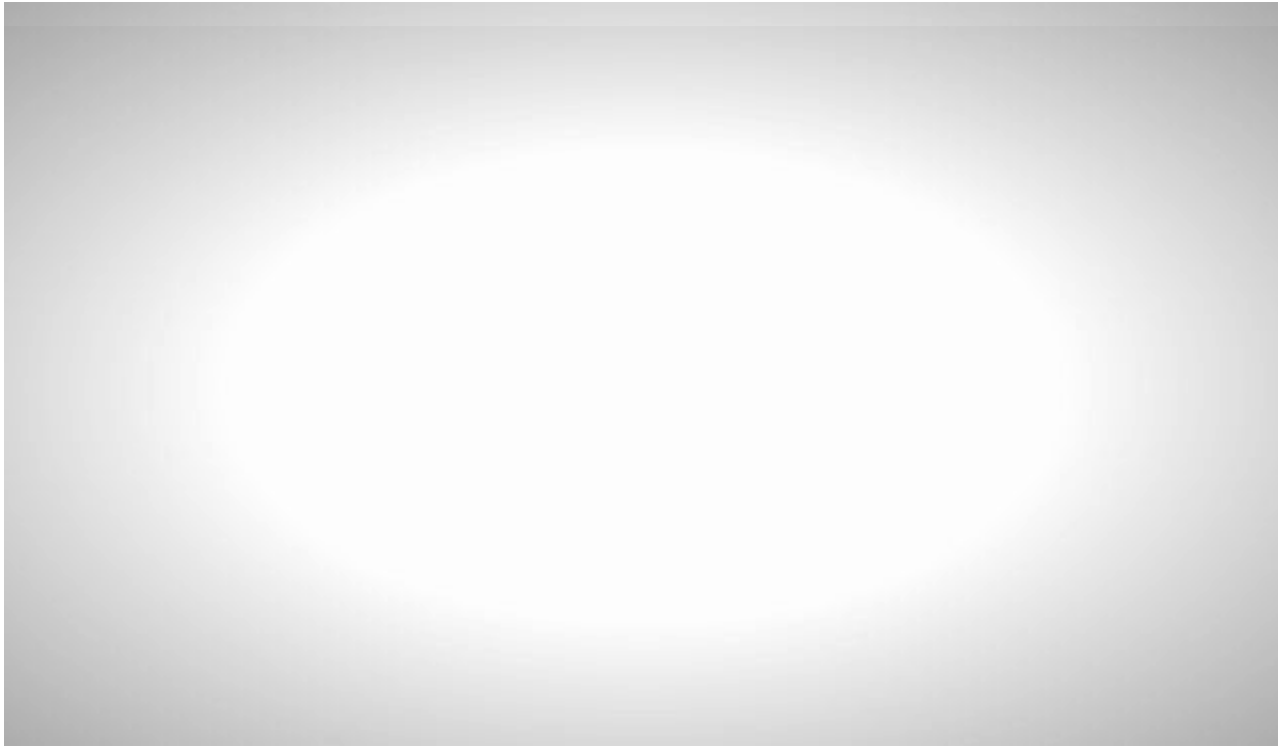
Open Space Network



THE UNIVERSITY
of NORTH CAROLINA
at CHAPEL HILL

Animation View Key Plan





Questions?



View of South Road



THE UNIVERSITY
of NORTH CAROLINA
at CHAPEL HILL